

PARTS MANUAL

02. ENGINE MOTOR

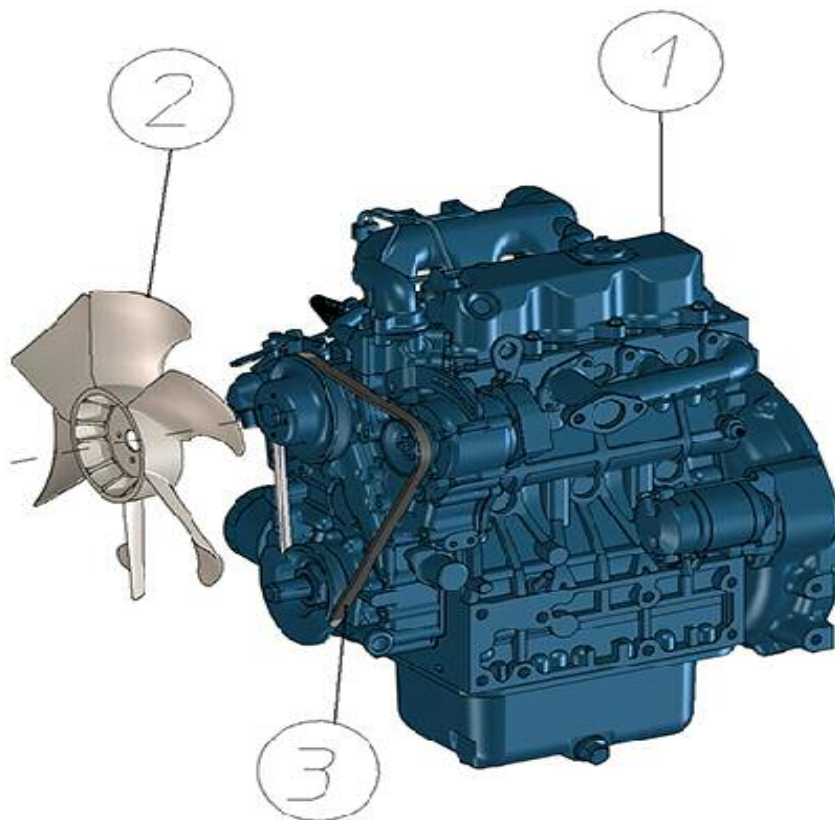


FIGURE	REFERENCE	DENOMINATION	AMOUNT
001	67.02101.00	DIESEL ENGINE	1
002	KU1580974112	FAN	1
003	KU1641497011	BELT	1

02. ENGINE EXHAUST PIPE



FIGURE	REFERENCE	DENOMINATION	AMOUNT
001	24.02202.00	EXHAUST PIPE	1
002	24.02208.00	EXHAUST PIPE PROTECTION	1
003	24.02210.00	EXHAUST PIPE	1
004	23.02204.00	TUBE	1
005	23.02203.00	EXHAUST CLAMP	1
006	104.10000.00	WASHER DIN7980 D10	6
007	101.10000.66	WASHER DIN125 D10	6
008	603.10030.86	SCREW DIN933	4
009	104.08000.00	WASHER DIN7980 D8	7
010	617.10035.86	SCREW DIN960 M10x1.25x35	2
011	101.08000.67	WASHER DIN125 D8	8
012	701.08000.66	NUT DIN934 M8X1,25	4
013	101.08000.66	WASHER DIN125 D8	3
014	603.08020.87	SCREW DIN933 M8x20	3
015	603.08035.87	SCREW 8X35/1.25 DIN 933 INOX.A-2	4
016	935.51055.66	CLAMP (CH 250)	1

02. ENGINE INLET

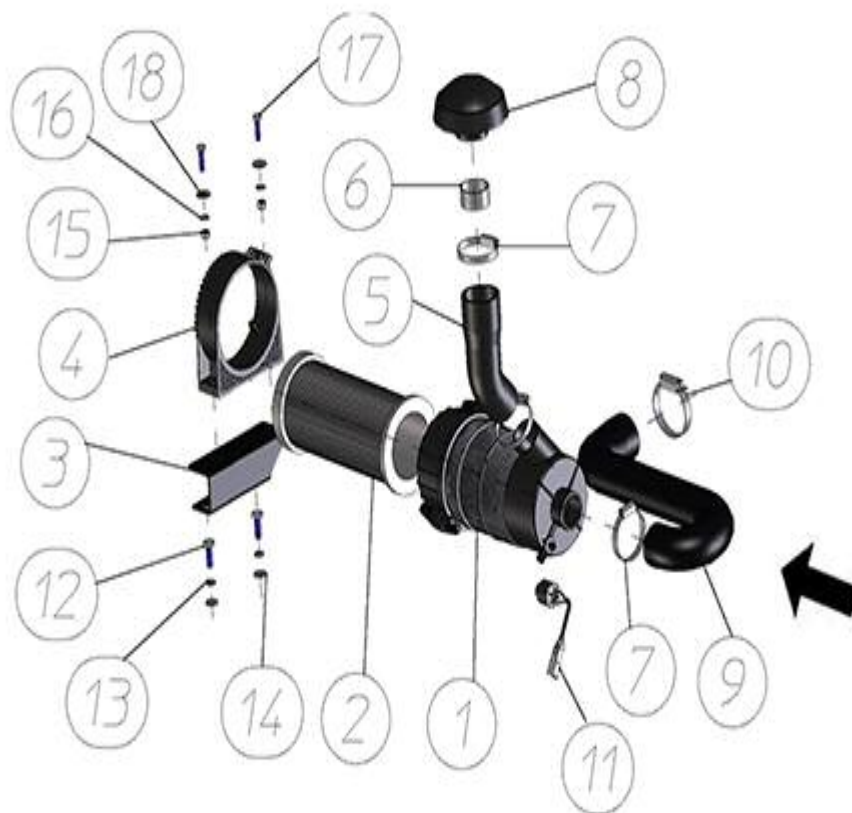


FIGURE	REFERENCE	DENOMINATION	AMOUNT
001	45.01200.12	AIR FILTER VIRGIS	1
002	45.01204.00	FILTER ELEMENT 60x105x300 (500H)	1
003	24.02301.00	SUPPORT	1
004	45.01201.12	CLAMP	1
005	23.02300.00	TUBE	1
006	23.02302.00	TUBE	1
007	912.50070.60	CLAMP	3
008	45.01202.00	AIR FILTER PROTECTOR	1
009	23.02303.00	TUBE	1
010	912.60080.66	CLAMP	1
011	64.11042.00	INDICATOR FILTER AIR 50 mbar	1
012	603.10030.86	SCREW DIN933	2
013	104.10000.00	WASHER DIN7980 D10	2
014	101.10000.66	WASHER DIN125 D10	2
015	711.08000.66	NUT DIN982 M8	2
016	101.08000.66	WASHER DIN125 D8	2
017	603.08030.86	SCREW DIN933 M8X30	2
018	112.08000.66	WASHER DIN9021 D8	2

02. ENGINE DELIVERY

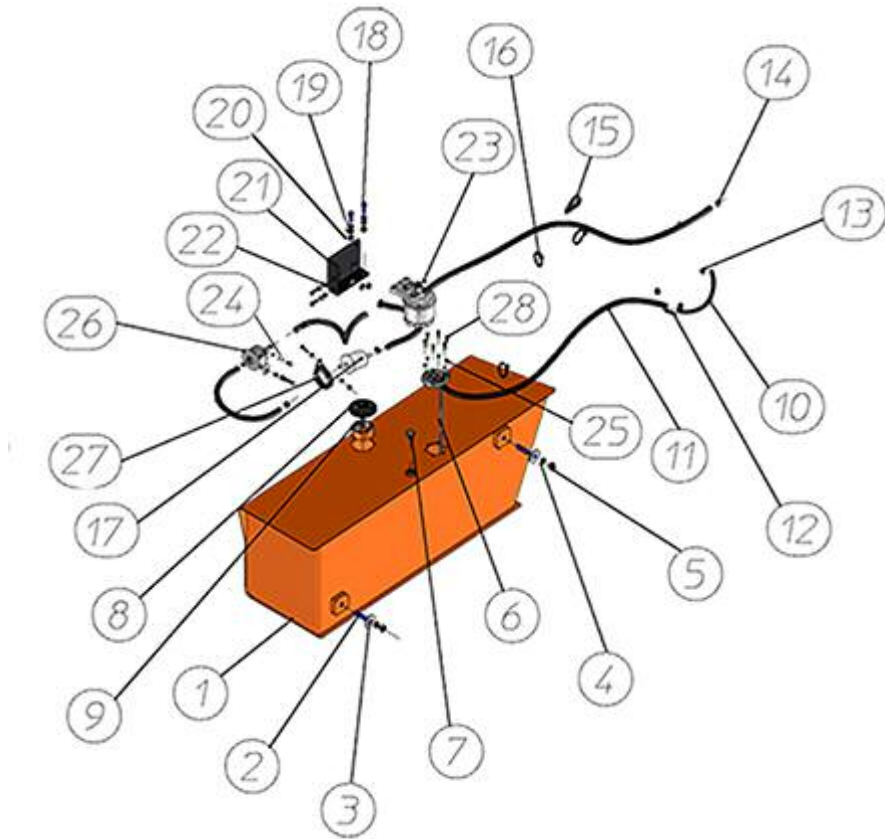


FIGURE	REFERENCE	DENOMINATION	AMOUNT
001	24.02040.00	FUEL TANK 65L	1
002	01.00102.00	STUD DIN939 * 40 M12x1,75	2
003	112.12000.66	WASHER DIN9021 D 12X36	2
004	104.12000.00	WASHER DIN7980 D12	2
005	701.12000.66	NUT DIN934 M12x1.75	2
006	46.09014.00	CAP	1
007	10.14287.00	LEVEL	1
008	12.12024.00	FUEL CAP 40X72	1
009	15.11728.00	23X56X58 CAP	1
010	469.25009.00	HOSE L/P MAT.	1
011	469.03014.00	HOSE L/P MAT. 8x14	1
012	20.02062.00	FITTING	1
013	948.00807.00	CLAMP	2
014	948.01308.00	SPRING CLAMP Ø13	9
015	830.02506.00	CLAMP LOOP	1
016	931.05370.00	CLAMP TAPE 5x370	3
017	70.02200.00	DIESEL ENGINE KUBOTA D1105	1
018	603.08025.86	SCREW DIN933 M8x25	2

02. ENGINE DELIVERY

FIGURE	REFERENCE	DENOMINATION	AMOUNT
019	101.08000.66	WASHER DIN125 D8	4
020	711.08000.66	NUT DIN982 M8	2
021	24.02403.00	FIXING SUPPORT	1
022	711.06000.66	NUT DIN982 M6	6
023	KU1522443013	gasoil filter + support	1
023.1	DN000002	FUEL FILTER CARTRIDGE (400h)	1
024	101.06000.66	WASHER DIN125 D6	8
025	104.04000.00	WASHER DIN7980 D4	6
026	KURC60151351	FUEL ASSY PUMP	1
027	830.05006.00	HOSE TIE D50X6	1
028	615.04020.66	SCREW DIN84	6

02. ENGINE

RADIATOR (PART 1)

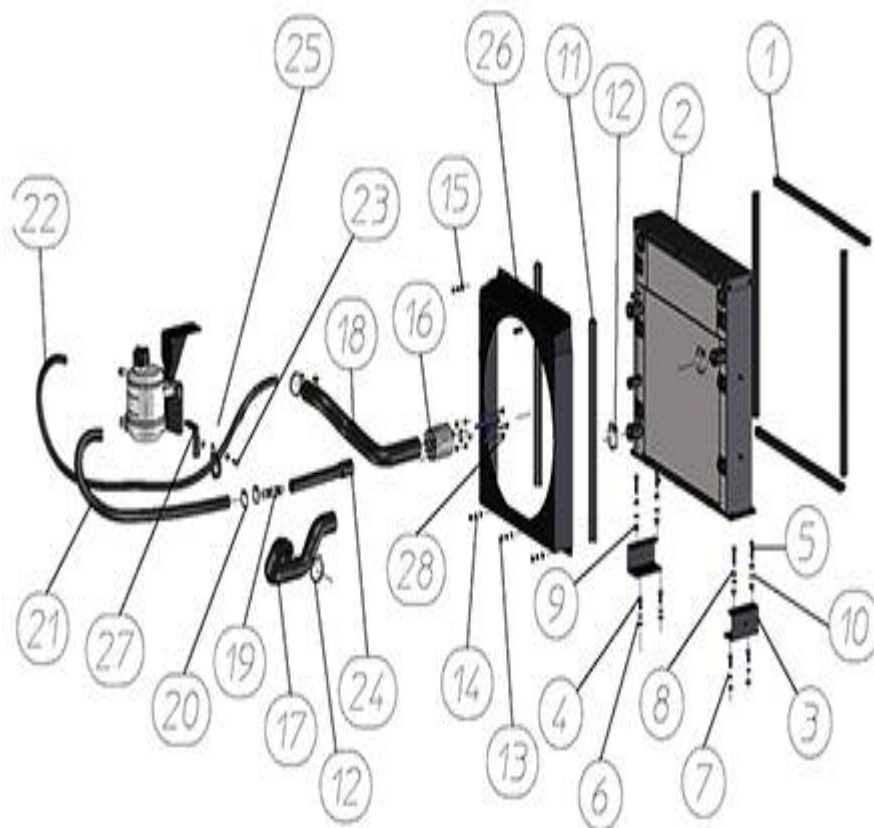


FIGURE	REFERENCE	DENOMINATION	AMOUNT
001	472.00410.00	RUBBER PROFILE 22X22	4
002	20.02051.05	RADIATOR	1
003	24.02504.00	SUPPORT	2
004	603.08020.86	SCREW DIN933 M8x20	4
005	603.08030.86	SCREW DIN933 M8X30	4
006	101.08000.66	WASHER DIN125 D8	8
007	104.08000.00	WASHER DIN7980 D8	4
008	701.08000.66	NUT DIN934 M8X1,25	4
009	711.08000.66	NUT DIN982 M8	4
010	101.08000.66	WASHER DIN125 D8	8
011	472.00411.00	RUBBER PROFILE MAT.	2
012	912.30045.00	CLAMP	4
013	701.06000.66	NUT DIN934 M6X1	7
014	104.06000.00	WASHER DIN7980 D6	11
015	101.06000.66	WASHER DIN125 D6	12
016	24.02518.00	SHEET	1
017	24.02510.00	HOSE	1
018	24.02511.00	HOSE	1

02. ENGINE

RADIATOR (PART 1)

FIGURE	REFERENCE	DENOMINATION	AMOUNT
019	464.03024.00	TUBE	1
020	912.20032.00	CLAMP	4
021	464.03024.00	TUBE	1
022	469.01017.00	TUBE MAT.	1
023	603.06020.86	SCREW DIN933 M6x20	3
024	20.02065.00	RUBBER HOSE B/P D22 / D16	1
025	830.04006.00	CLAMP LOOP D40x6	1
026	24.02512.00	RADIATOR PROTECTION	1
027	25.11901.00	SHEET	1
028	604.06090.87	LEFT MUDGUARD	4

02. ENGINE

RADIATOR (PART 2)

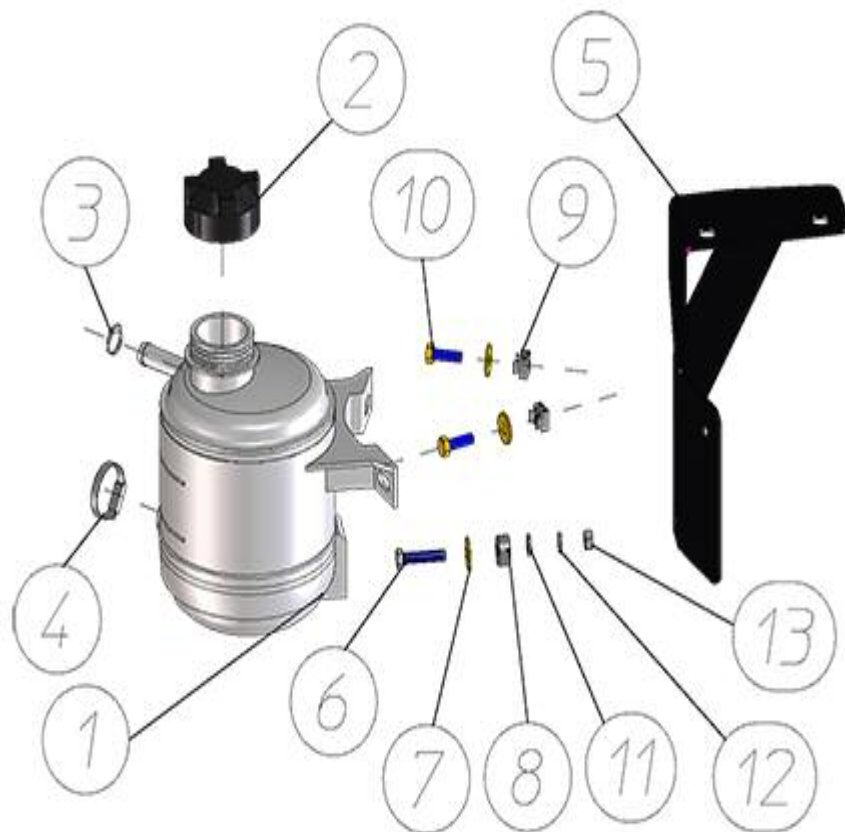


FIGURE	REFERENCE	DENOMINATION	AMOUNT
001	09.00171.01	EXPANSION TANK WITHOUT CAP	1
002	09.00172.00	CAP	1
003	912.08016.66	CLAMP DIN3017	2
004	912.20032.00	CLAMP	1
005	24.02513.00	FIXING SUPPORT	1
006	603.06030.86	SCREW DIN933 M6x30	1
007	112.06000.66	WASHER DIN9021 D6	3
008	20.10010.01	PIN SUPPORT 8X17	1
009	726.06003.66	CAGED NUT M6x3	2
010	603.06020.86	SCREW DIN933 M6x20	2
011	101.06000.66	WASHER DIN125 D6	1
012	104.06000.00	WASHER DIN7980 D6	1
013	701.06000.66	NUT DIN934 M6X1	1

02. ENGINE ENGINE SUPPORTS

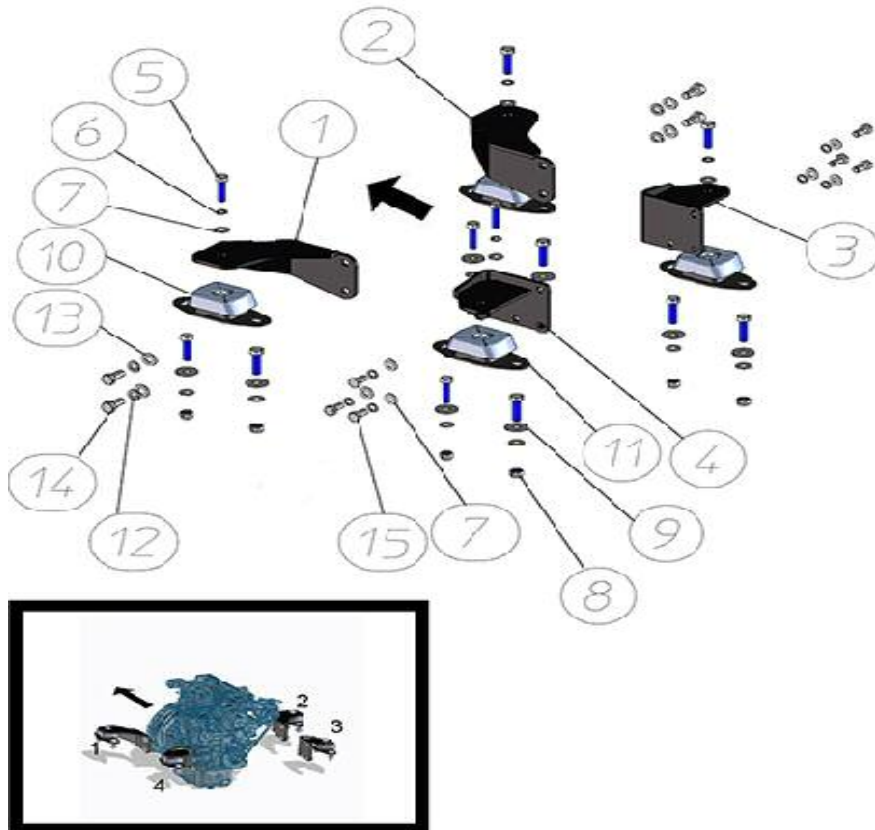


FIGURE	REFERENCE	DENOMINATION	AMOUNT
001	23.02606.00	ENGINE SUPPORT	1
002	23.02605.00	ENGINE SUPPORT	1
003	24.02612.00	RIGHT REAR ENGINE SUPPORT	1
004	24.02611.00	LEFT REAR ENGINE SUPPORT	1
005	603.12050.86	SCREW DIN933	12
006	104.12000.00	WASHER DIN7980 D12	10
007	101.12000.66	WASHER DIN125 D12	18
008	711.12000.66	NUT DIN982 M12	8
009	101.12000.66	WASHER DIN125 D12	18
010	24.02615.00	SHOCK ABSORBER	2
011	36.02612.00		2
012	104.14000.00	CIR-CLIP EXT. DIN7980	4
013	101.14000.66	WASHER DIN125 D14	4
014	617.14025.86	SCREW DIN931	4
015	617.12025.86	SCREW DIN933	6

03. TRANSMISSION HYDROSTATIC PUMP

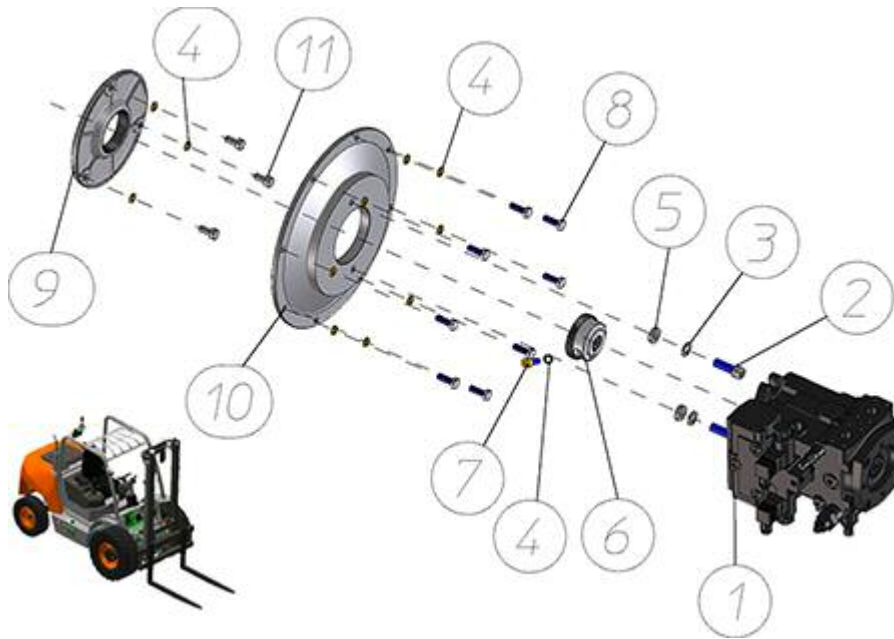


FIGURE	REFERENCE	DENOMINATION	AMOUNT
001	23.03270.00	HYDROSTATIC PUMP	1
002	601.14040.86	HEXAGON SOCKET HEAD SCREW DIN912 M14x40	2
003	104.14000.00	CIR-CLIP EXT. DIN7980	2
004	104.10000.00	WASHER DIN7980 D10	12
005	15.30110.00	WASHER 14X7X26	2
006	70.02091.01	COUPLING GEA/GEA Z50XZ15X37	1
007	601.10030.86	SCREW DIN912	1
008	603.10030.87	SCREW DIN 933 M10x30	8
009	65.03214.01	ATTACHMENT CIL/DEN	1
010	20.03204.00	SAE SAUCER 5, B2 H = 45	1
011	617.10025.86	SCREW DIN960 M10X25X1.25	3

03. TRANSMISSION HYDROSTATIC ENGINE

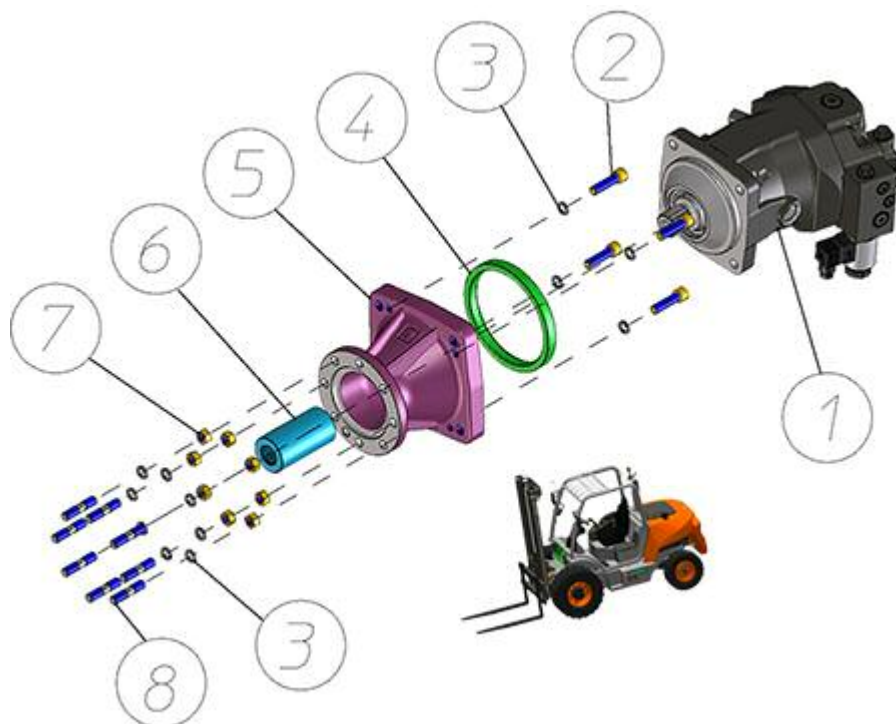


FIGURE	REFERENCE	DENOMINATION	AMOUNT
001	52.01490.05	HYDRAULIC ENGINE REXROTH A6VM SERIE 65 80cc	1
002	601.12045.86	SCREW DIN912	4
003	104.12000.00	WASHER DIN7980 D12	12
004	20.03113.00	ADAPTER RING	1
005	20.03112.00	HYDRAULIC ENGINE SUPPORT	1
006	20.03109.00	AXLE DEN/EST D52X102 W30-W3	1
007	701.12000.66	NUT DIN934 M12x1.75	8
008	08.00123.10	STUD DIN939*	8

03. TRANSMISSION FRONT AXLE

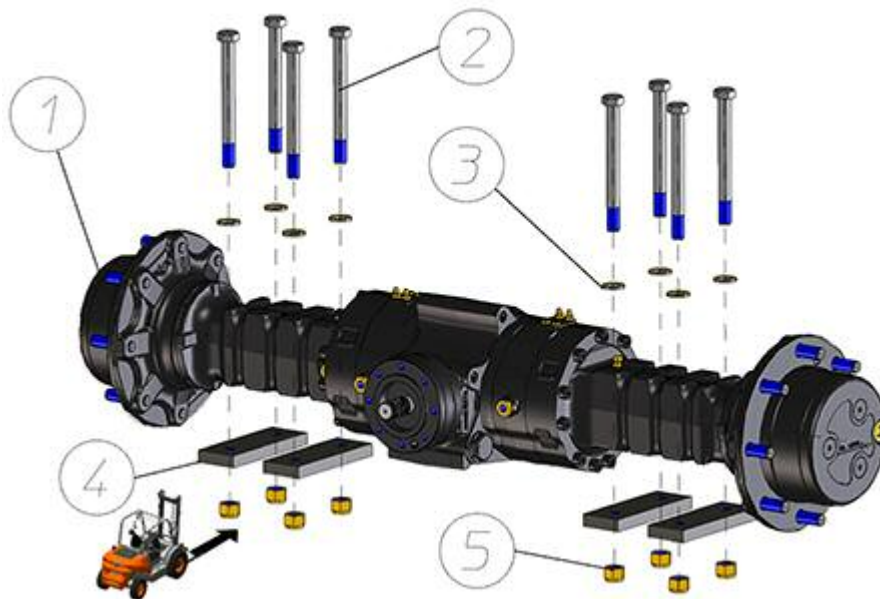


FIGURE	REFERENCE	DENOMINATION	AMOUNT
001	57.03310.00	FRONT AXLE	1
002	604.20210.86	TORNILLO DIN931 M20x210	8
003	101.20000.66	WASHER DIN125	8
004	65.03318.01	STRIP 200X70X20	4
005	711.20000.66	NUT	8

03. TRANSMISSION REAR AXLE (1)

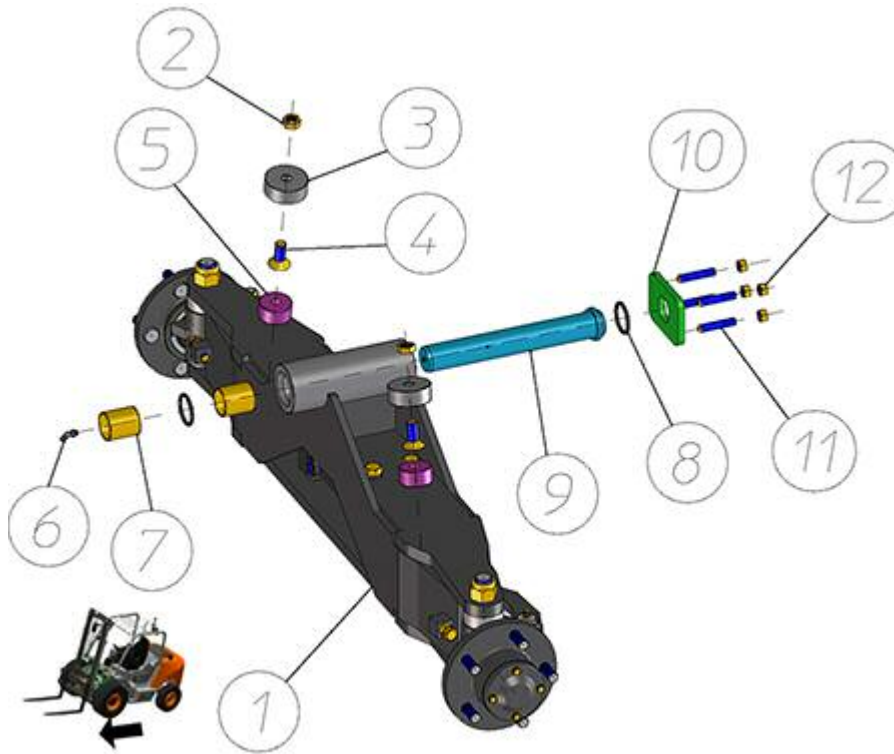


FIGURE	REFERENCE	DENOMINATION	AMOUNT
001	20.03000.02	GUIDELINE AXLE C 250 H /C 200 H	1
002	701.16000.66	NUT	2
003	20.03003.00	SHOCK ABSORVER SUPPORT	2
004	618.16030.86	SCREW DIN7991	2
005	20.03002.00	BUTT	2
006	903.08000.33	GREASER DIN71412-B	1
007	949.04050.00	PLAIN BEARING 40X44X50 DIN 1494	2
008	201.04053.50	O-RING DIN3770	2
009	57.03853.02	SHAFT CYL/CYL	1
010	57.04114.01	PLATE	1
011	612.12060.86	BOLT DIN914 M12x60	4
012	701.12000.66	NUT DIN934 M12x1.75	4

03. TRANSMISSION REAR AXLE (2)

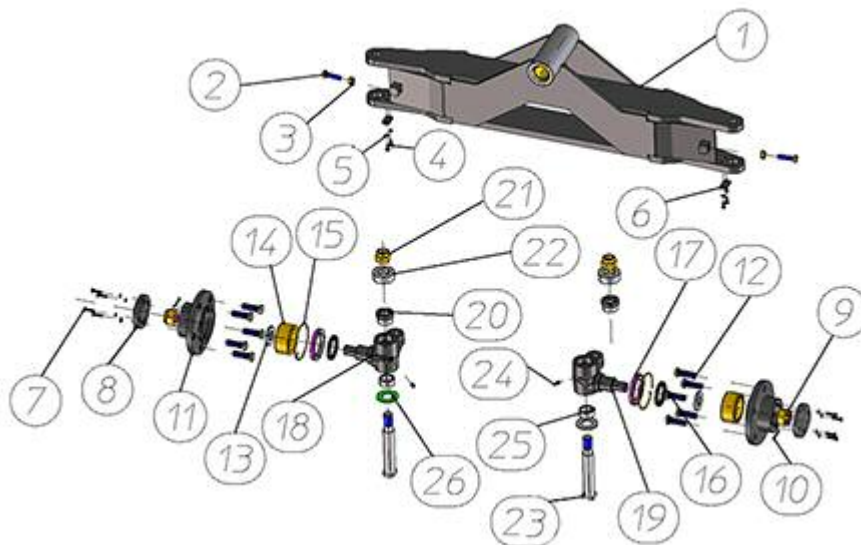


FIGURE	REFERENCE	DENOMINATION	AMOUNT
001	20.03000.02	GUIDELINE AXLE C 250 H /C 200 H	1
002	603.12045.86	SCREW DIN933	2
003	701.12000.66	NUT DIN934 M12x1.75	2
004	603.06015.86	SCREW DIN933 M6x15	12
005	104.06000.00	WASHER DIN7980 D6	4
005	104.06000.00	WASHER DIN7980 D6	8
006	15.00832.00	PANEL	2
007	603.06025.86	SCREW DIN933 M6x25	8
008	20.03019.00	HUBCAP	2
009	10.01116.01	NUT	2
010	401.25045.60	FITTING M/M M18x3/8BSP	2
011	20.03018.00	WHEEL HUB	2
012	45.00452.00	SCREW FASTENING WHEEL	10
013	20.03043.01	WASHER, FIBER Ø28xØ54x6	2
014	304.04038.00	BEARING DIN628	2
015	31.00380.00	RING 0,5 MM.	2
016	202.50008.50	SEAL DIN3760	2
017	20.03020.00	NUT	2
018	20.03016.00	STUB AXLE	1
019	20.03017.00	STUB AXLE	1
020	331.30030.00	BEARING DIN 5429	2
021	718.24000.66	BUSHING 20x23x30 DIN 1494	2
022	20.03045.00	SPACER BUSH	2
023	20.03042.00	AXLE CIL/ROS	2
024	901.08000.33	GREASER DIN71412-A M8x1,25	2

025	327.30017.00	GASKET MET. BUNA	2
026	20.03055.00	WASHER	2

03. TRANSMISSION STEERING CYLINDER MOUNTING

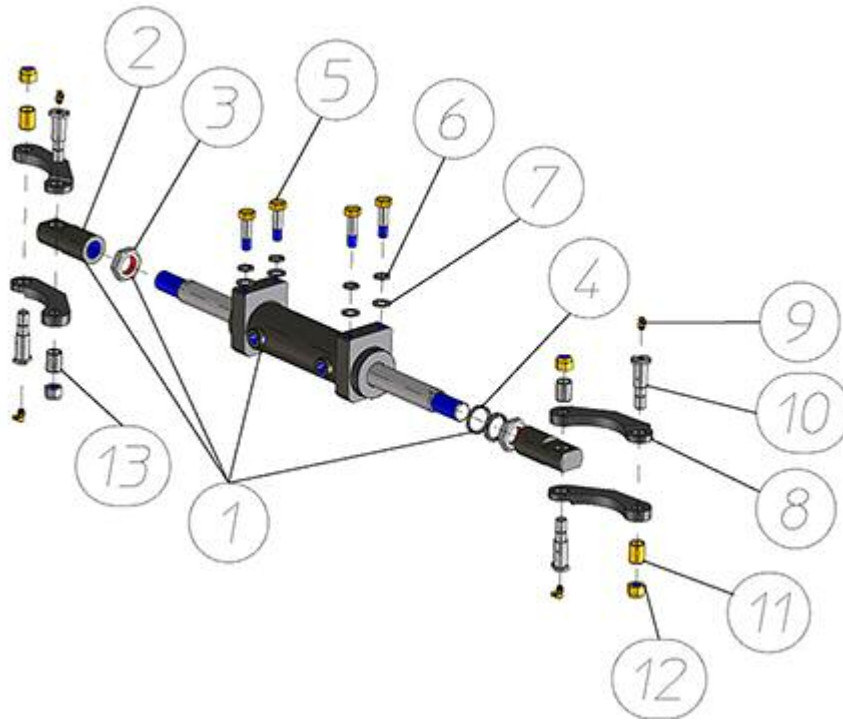


FIGURE	REFERENCE	DENOMINATION	AMOUNT
001	20.03700.01	CYLINDER D/E	1
001B	20.99100.00	GASKETS KIT	1
002	20.03704.00	CYLINDER ROD HEAD	2
003	702.30000.66	NUT	2
004	233.36006.50	WIPER RING	2
005	20.03708.00	SCREW DIN931*	4
006	104.14000.00	CIR-CLIP EXT. DIN7980	4
007	101.14000.66	WASHER DIN125 D14	4
008	20.03033.00	CON ROD	4
009	902.08000.33	GREASER DIN71412-C	4
010	20.03034.02	AXLE CIL/ROS	4
011	949.02030.00	BUSH 20x23x30 DIN125	2
012	718.16000.66	NUT	4
013	949.02030.00	BUSH 20x23x30 DIN125	2

04. CHASSIS

CHASSIS

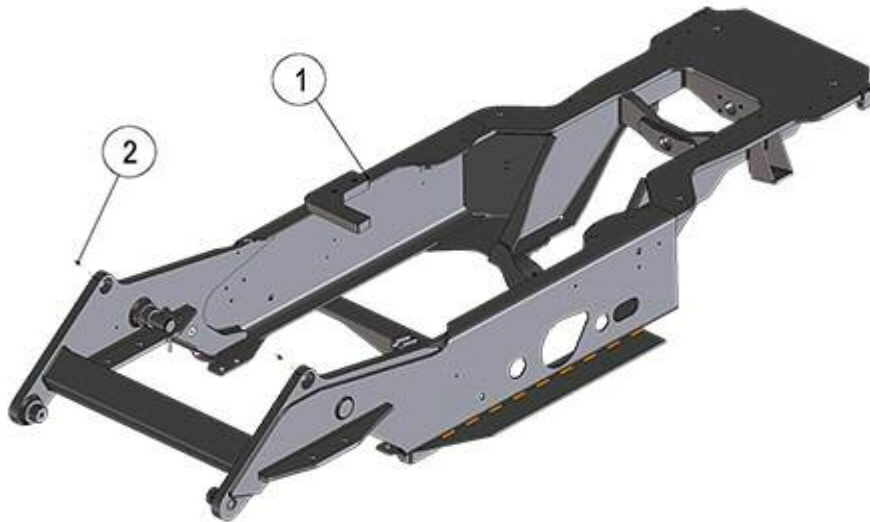


FIGURE	REFERENCE	DENOMINATION	AMOUNT
001	24.04200.01		1
002	612.08010.80	SCREW DIN814	2

05. ACTUATORS BRAKES

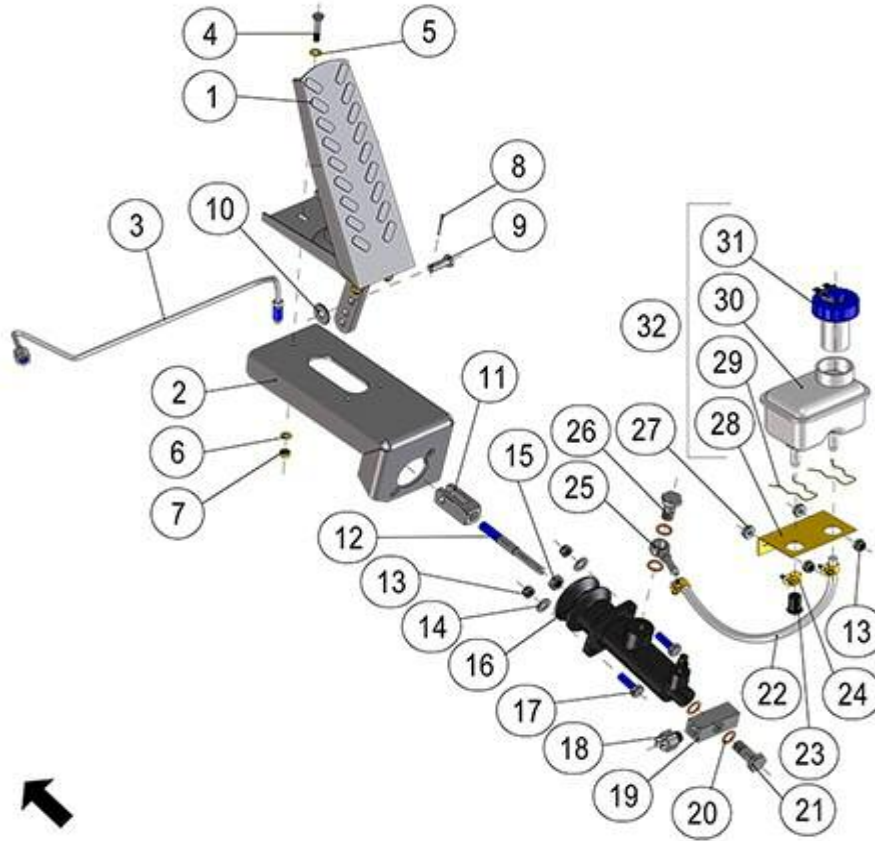


FIGURE	REFERENCE	DENOMINATION	AMOUNT
001	43.80251.00	BRAKE PEDAL	1
002	20.05225.01	BRAKE PUMP SUPPORT	1
003	20.05021.00	SERVICE BRAKE PIPE BUNDY4	1
004	604.06030.86	SCREW DIN931	3
005	101.06000.66	WASHER DIN125 D6	3
006	104.06000.00	WASHER DIN7980 D6	3
007	701.06000.66	NUT DIN934 M6X1	3
008	401.02025.60	PIN DIN94 2x25	1
009	01.00514.01	AXLE CIL/CPA 14x8x28	1
010	112.08000.66	WASHER DIN9021 D8	1
011	20.05040.00	ART. FORK	1
012	20.05122.01	ROD STRAIGHT R10	1
013	711.08000.66	NUT DIN982 M8	2
014	101.08000.66	WASHER DIN125 D8	2
015	701.10000.66	NUT DIN934 M10x1.5	1
016	55.00770.20	BRAKE PUMP	1
017	603.08025.86	SCREW DIN933 M8x25	2
018	43.01520.00	BRAKE FLUID SWITCH	1

05. ACTUATORS BRAKES

FIGURE	REFERENCE	DENOMINATION	AMOUNT
019	20.05055.00	NIPPLE O/H/H	1
020	106.12000.20	WASHER CU	4
021	55.00757.20	NIPPLE SCREW SIM.	1
022	469.15009.00	PLASTIC HOSE 6X9	1
023	20.02178.00	CAP	1
024	912.10000.66	CLAMP	3
025	55.00759.00	NIPPLE O/TB	1
026	55.00760.00	NIPPLE SCREW SIM.	1
027	701.08000.66	NUT DIN934 M8X1,25	2
028	46.05015.00	ANGULAR SUPPORT	1
029	46.05016.00	CLIP	2
030	46.05020.00	BRAKE LIQUIDE TANK	1
031	46.05011.00	CAP	1

06. STEERING STEERING



FIGURE	REFERENCE	DENOMINATION	AMOUNT
001	15.01016.01	STEERING WHEEL D21-315 WITH POMMEL	1
0012	24.11100.00		1
001B	15.10161.01	KNOB	1
002	00.00626.05	TRIM	1
003	24.11144.00		1
004	66.11104.00	DISPLAY PROGRAMMABLE LCD 4" COL	1
005	24.11100.00		1
006	701.10000.66	NUT DIN934 M10x1.5	4
007	104.10000.00	WASHER DIN7980 D10	8
008	15.00435.01	STUD DIN938 33 M10x1.5	4
009	603.10020.86	SCREW DIN933 M10x20	4
010	24.06200.00	HYDROSTATIC STEERING	1
011	24.11001.00		1

012	48.11590.01	NC CONTACTOR FOR EMERGENCY STOP	1
013	32.08172.00	MAIN SWITCH WITH KEY ASSEMBLY	1

RUEDAS

FRONT WHEELS

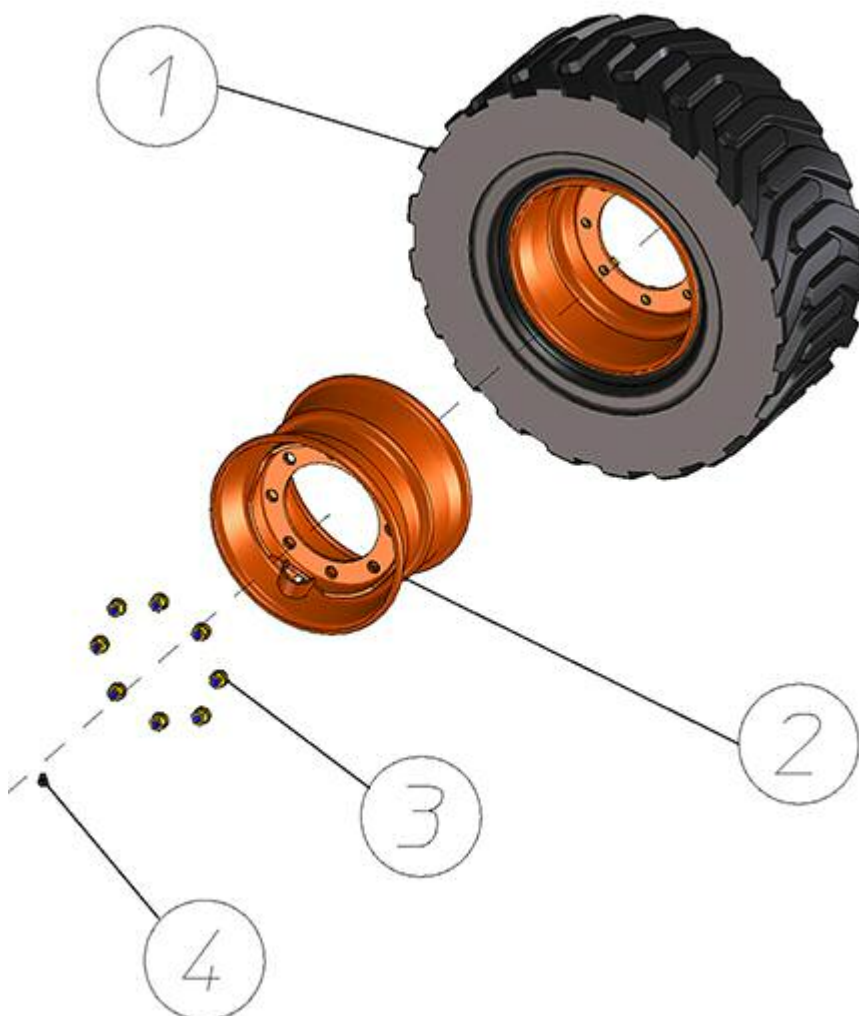


FIGURE	REFERENCE	DENOMINATION	AMOUNT
001A	24.07120IZ00	LEFT MOUNTED WHEEL	1
001B	24.07120DE00	RIGHT MOUNTED WHEEL	1
002	25.07011.01	TYRE	2
003	734.02015.86	NUT DIN74361A-M20X1.5	16
004	70.07024.00	VALVE, TUBELESS TR575	2

RUEDAS

REAR WHEELS

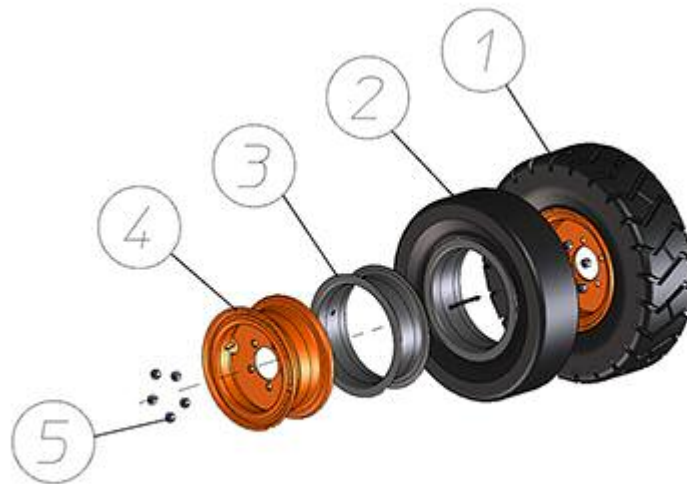


FIGURE	REFERENCE	DENOMINATION	AMOUNT
001	45.00901.00	WHEEL 12`X12PR 7.00	2
002	15.00921.02	WASHER DIN125	2
003	15.00920.01	FLAP	2
004	45.00911.00	RIM 12 5.00S	2
005	45.00588.00	NUT DIN982 M16x1,5	12

08. BODYWORK CABIN (1)

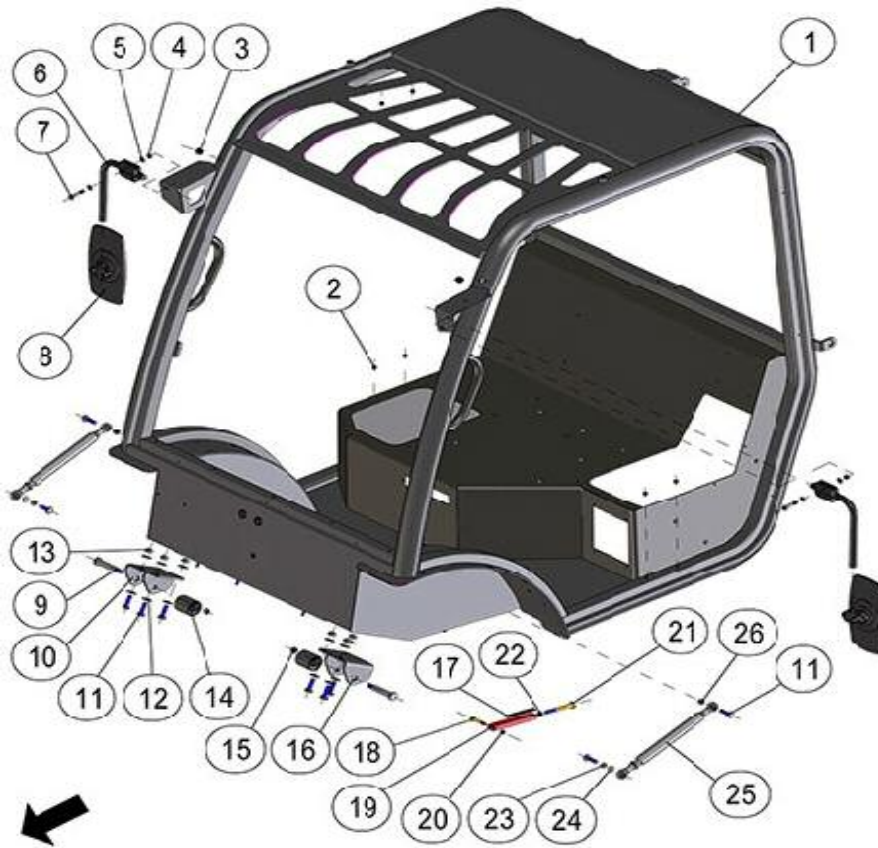


FIGURE	REFERENCE	DENOMINATION	AMOUNT
001	24.08200.00	OPEN CABIN SET	1
002	02.32008.00	PLASTIC PLUG	8
003	02.32018.00	PLASTIC D18 CAP	4
004	720.08000.66	NUT DIN985 M8 AUTOLOCKING	2
005	101.08000.66	WASHER DIN125 D8	4
006	12.08012.00	DRIVIMR MIRROR SUPPORT	2
007	604.08040.86	SCREW DIN931	2
008	12.08011.00	REARVIEW MIRROR	2
009	24.08217.00	PIN	2
010	24.08215.00	RIGHT FIXING SUPPORT	1
011	603.10035.86	SCREW DIN933 M10x35	10
012	01.00837.00	CIR-CLIP INT. DIN9021*	12
013	720.10000.66	NUT	6
014	30.08026.00	ECCENTRIC D48X64 CUSHION	2
015	720.12000.66	NUT M12 DIN985 AUTOLOCKING	2
016	24.08217.00	PIN	1
017	472.02015.00	RUBBER PROFILE MAT.	1
018	604.08045.86	SCREW DIN931 M8x45	1

08. BODYWORK
CABIN (1)

FIGURE	REFERENCE	DENOMINATION	AMOUNT
019	12.04036.00	SUPPORT	1
020	711.08000.66	NUT DIN982 M8	1
021	604.10090.86	NUT	1
022	701.10000.66	NUT DIN934 M10x1.5	1
023	104.10000.00	WASHER DIN7980 D10	2
024	101.10000.66	WASHER DIN125 D10	2
025	57.08040.00	CYLINDER 28X325 2050N	2
026	711.10000.66	SHOCK ABSORBER	2

08. BODYWORK CABIN (2)

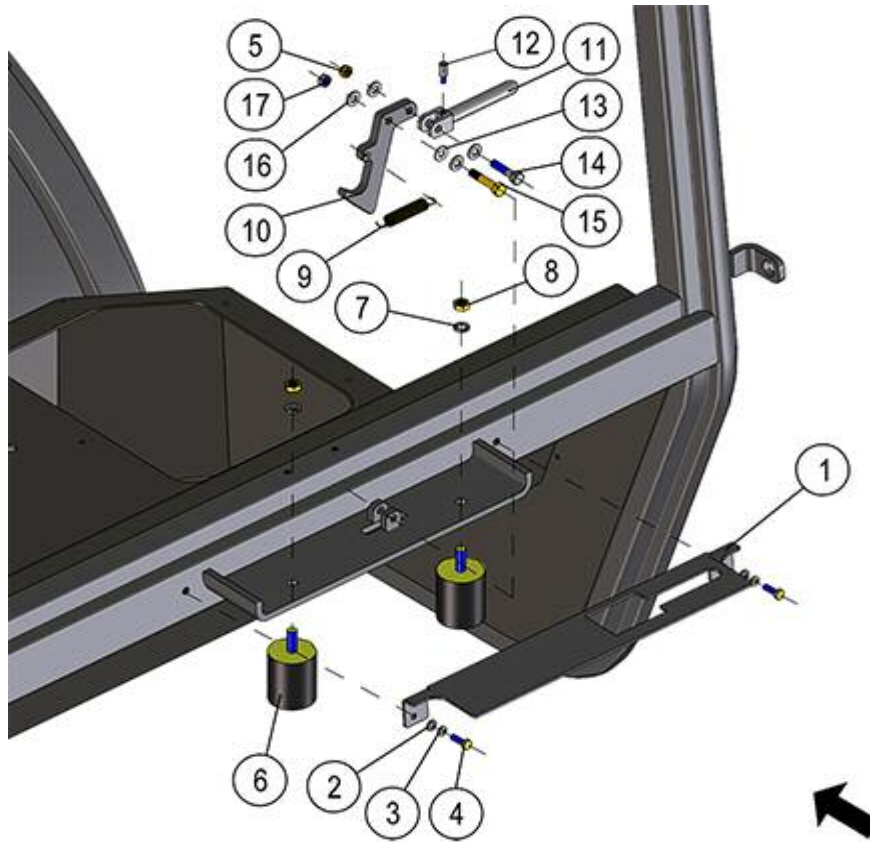


FIGURE	REFERENCE	DENOMINATION	AMOUNT
001	24.08219.00	COVER	1
002	101.06000.66	WASHER DIN125 D6	2
003	104.06000.00	WASHER DIN7980 D6	2
004	603.06020.86	SCREW DIN933 M6x20	2
005	711.08000.66	NUT DIN982 M8	1
006	08.00107.02	BUTT	2
007	104.10000.00	WASHER DIN7980 D10	2
008	701.10000.66	NUT DIN934 M10x1.5	2
009	01.00223.00	SPRING TENSION	1
010	24.08218.00	PAWL	1
011	57.08024.00	ACC. LEVER	1
012	57.08026.00	SHAFT	1
013	116.08000.00	WASHER DIN125 A D8	1
014	604.08035.86	SCREW DIN931	1
015	604.08040.86	SCREW DIN931	1
016	101.08000.66	WASHER DIN125 D8	4
017	720.08000.66	NUT DIN985 M8 AUTOLOCKING	1

08. BODYWORK CABIN (3)



FIGURE	REFERENCE	DENOMINATION	AMOUNT
001	24.08003.00	DRIVER SEAT	1
002	66.08241.00	ORANGE SEAT BELT WITH SENSOR	1
003	101.06000.66	WASHER DIN125 D6	39
004	101.08000.66	WASHER DIN125 D8	2
005	603.08035.86	SCREW DIN933	4
006	57.08401.00	SUPPORT	1
007	10.11081.00	PIN SUPPORT 6X20X317	2
008	112.08000.67	WASHER DIN9021	4
009	104.08000.00	WASHER DIN7980 D8	4
010	701.08000.66	NUT DIN934 M8X1,25	4
011	711.06000.66	NUT DIN982 M6	4
012	24.08221.00	AIR COVER	1
013	24.08220.00	AIR CONDITIONING FILTER COVER	1
014	24.08208.00	LEFT COVER	1
015	24.08209.00	RIGHT COVER	1
016	24.08287.00	SHOCK ABSORBER	3
017	32.08164.00	MACHINE LEVELING INDICATOR	1
018	601.04020.87	SCREW DIN912 M4x20	3

08. BODYWORK
CABIN (3)

FIGURE	REFERENCE	DENOMINATION	AMOUNT
019	24.08206.00	DASHBOARD COVER	1
020	24.08205.00	DASHBOARD	1
021	603.06025.86	SCREW DIN933 M6x25	2
022	630.06015.96	SCREW ISO7380 M6x15	36
023	476.00100.00	PLATE WEARING	1

08. BODYWORK SHEETS (1)

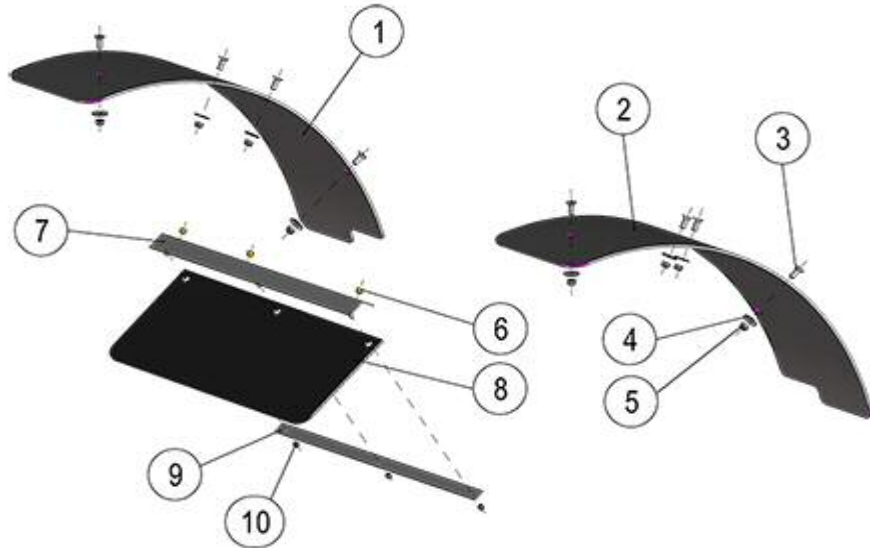


FIGURE	REFERENCE	DENOMINATION	AMOUNT
001	24.08104.00	RIGHT MUDGUARD	1
002	24.08103.00	LEFT MUDGUARD	1
003	618.08020.86	SCREW DIN7991 M8x20	8
004	112.08000.66	WASHER DIN9021 D8	8
005	711.08000.66	NUT DIN982 M8	8
006	711.06000.66	NUT DIN982 M6	3
007	10.00227.01	BRACKET ANG.	1
008	10.00225.01	GUARD	1
009	10.00226.01	STRIP SUPPORT	1
010	711.05000.66	NUT DIN982 M5	3

08. BODYWORK SHEETS (2)



FIGURE	REFERENCE	DENOMINATION	AMOUNT
001	630.06020.96	SCREW ISO7380 M6x20	2
002	101.06000.66	WASHER DIN125 D6	17
003	630.06015.96	SCREW ISO7380 M6x15	2
004	104.06000.00	WASHER DIN7980 D6	2
005	20.09208.01	SUPPORT 135X140X22	1
006	66.13300.00	NUMBER PLATE SUPPORT 250x196x30x1.5 (7022)	1
007	711.06000.66	NUT DIN982 M6	8
008	46.08774.00	CAP GPN M6	4
009	720.06000.66	NUT	4
010	24.08100.00	ENGINE COVER	1
011	101.08000.66	WASHER DIN125 D8	6
012	711.08000.66	NUT DIN982 M8	9
013	39.02041.01	SUPPORT	1
014	603.08025.86	SCREW DIN933 M8x25	1
015	472.00007.00	PROFILE RUBBER 8X15X450	3
016	720.08000.66	NUT DIN985 M8 AUTOLOCKING	2
017	24.13167.00	SHEET	1
018	24.13166.00	SHEET	1

08. BODYWORK
SHEETS (2)

FIGURE	REFERENCE	DENOMINATION	AMOUNT
019	105.06000.66	CIR-CLIP DIN7980	2
020	604.06020.86	SCREW M6x20 DIN931	2
021	604.06030.86	SCREW DIN931	2
022	48.08038.00	SHOCK REAR DOOR W	1
023	60.01926.00	RUBBER TOP 20X8.5 M6X165	1
024	603.06015.87	SCREW DIN933 M6x15	8
025	472.00411.00	RUBBER PROFILE MAT.	6
026	35.08172.00	HINGE 14X65X75	2
027	603.08020.86	SCREW DIN933 M8x20	4
028	104.08000.00	WASHER DIN7980 D8	4
029	24.08102.00	LEFT ENGINE COVER	1
030	24.08101.00	RIGHT ENGINE COVER	1

08. BODYWORK COUNTERWEIGHT

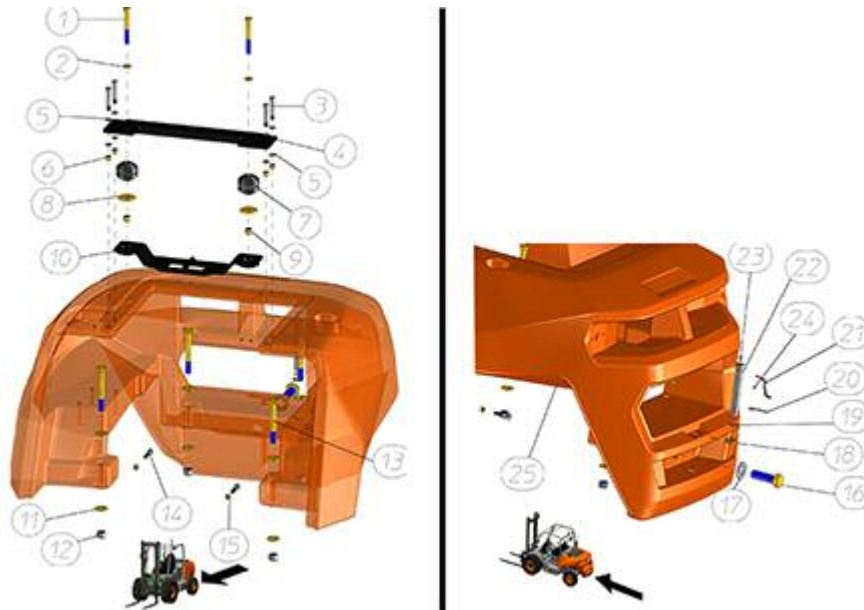


FIGURE	REFERENCE	DENOMINATION	AMOUNT
001	604.16130.86	SCREW	2
002	101.16000.66	WASHER DIN125 D16	2
003	604.12080.86	SCREW DIN931 M12x80	4
004	24.08302.00	FIXING SUPPORT	1
005	101.12000.66	WASHER DIN125 D12	8
006	711.12000.66	NUT DIN982 M12	4
007	24.08305.00	SHOCK ABSORBER	2
008	43.70833.00	WASHER 65X16X5	2
009	711.16000.66	NUT DIN982 M16 8.8 K	2
010	24.08303.00	FIXING SUPPORT	1
011	15.00561.00	WASHER DIN125 20.5x45x5	8
012	711.20000.66	NUT	4
013	604.20160.86	SCREW DIN931 M20x160	4
014	604.12060.87	SCREW	2
015	701.12000.66	NUT DIN934 M12x1.75	2
016	620.30100.86	SCREW	1
017	20.08030.00	WASHER	1
018	101.22000.66	WASHER DIN125	1
019	201.02104.50	O-RING DIN3770	1
020	15.00836.00	PIN DIN11024 R4	1
021	15.00834.00	CHAIN	1
022	43.70835.00	AXLE CPA/GRA	1
023	603.05015.86	SCREW DIN933	1
024	701.05000.66	NUT DIN934 M5x0.8	1
025	24.08300.00	COUNTERWEIGHT 1352 KG	1

09. MAST 3.30M DUPLEX

01. FULL MAST



FIGURE	REFERENCE	DENOMINATION	AMOUNT
001	20.12002.02	MAST DUPLEX 3.30M 1260	1

09. MAST 3.30M DUPLEX

02. MASTS AND SIDE SHIFT

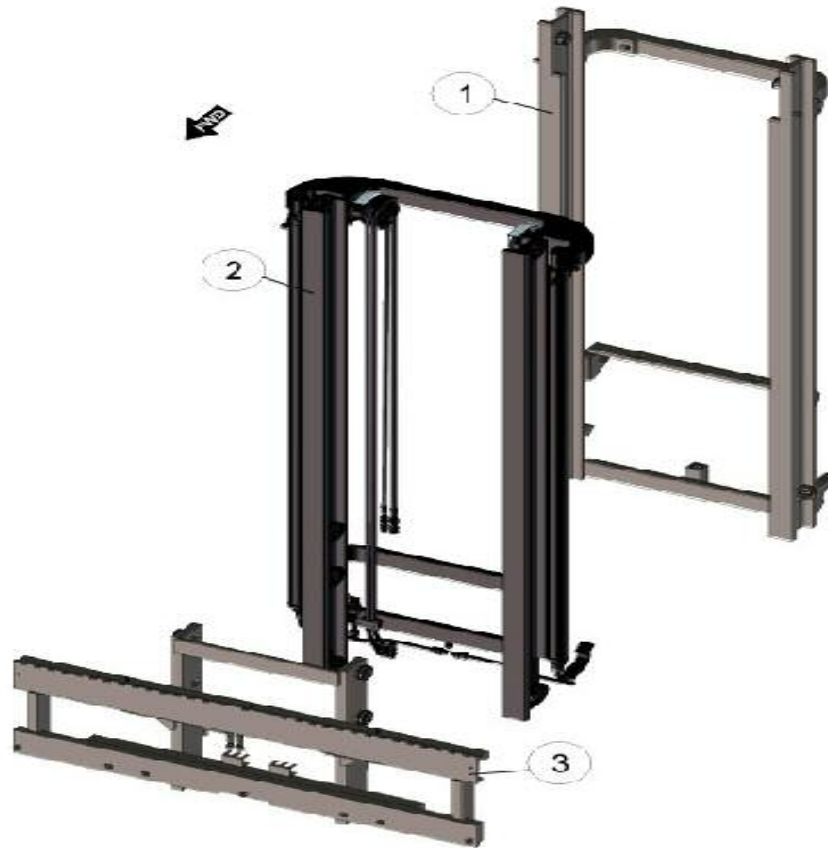


FIGURE	REFERENCE	DENOMINATION	AMOUNT
001	EL96606802080	OUTER MAST 3.30M	1
002	EL96606902080	INNER MAST 3.30M	1
003	EL966071F1260	COMPLETE SIDE SHIFT	1

09. MAST 3.30M DUPLEX

03. MAST COMPONENTS

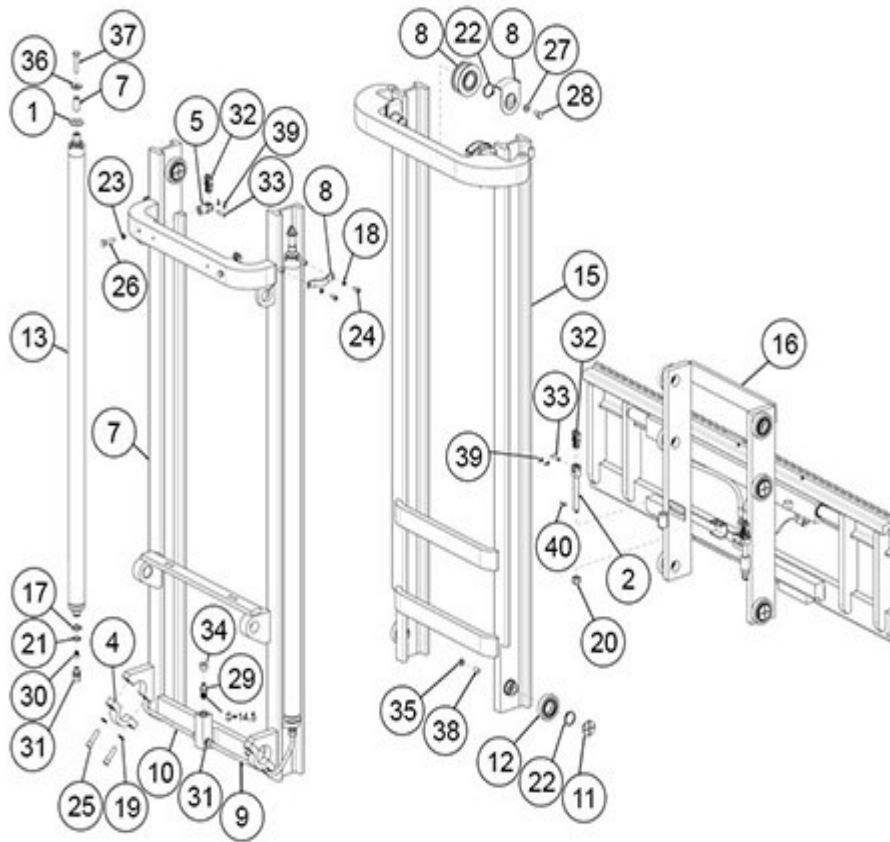


FIGURE	REFERENCE	DENOMINATION	AMOUNT
001	EL.50037.00	CONVEX WASHER D25 DIN6319C	2
002	EL.10083.00	CHAIN ADJUSTABLE TENSOR FOR BL634	2
003	EL.10108.00	PULLEY	2
004	EL.10239.00	CLAMP MAST	2
005	EL.30006.00	FIXED TENSOR FOR BL634	2
006	EL.10145.00	GUIDE	2
007	EL.50027.00	SPACER TUBE L.38	2
008	EL926977	LATERAL CYLINDER SUPPORT	2
009	EL947259	RIGID TUBE D12	1
010	EL947260	RIGID TUBE D12	1
011	EL948668	SHOCK ABSORVER D48	4
012	EL950589	BEARING D78	4
013	EL96366401630	CYLINDER MAST 3.30M	1
014	EL96606802080	OUTER MAST 3.30M	1
015	EL96606902080	INNER MAST 3.30M	1
016	EL966071F1260	COMPLETE SIDE SHIFT	1
017	EL.10032.00	WASHER ADJUST.	2
018	ELC2504	SPRING WASHER D8 UNI 1751	4



09. MAST 3.30M DUPLEX
03. MAST COMPONENTS

FIGURE	REFERENCE	DENOMINATION	AMOUNT
019	EL.10132.00	RING	4
020	ELC2523	SELF LOCKING NUT	2
022	EL.10034.00	O RING DIN471 E40	6
023	EL.50030.00	WASHER D10	2
024	EL.10080.00	SCREW	4
025	EL.50057.00	KNOB	4
026	EL.60108.00	SEEGER WASHER	4
027	EL.50033.00	FLAT WASHER D12 UNI6592	1
028	EL.50035.00	SCREW TE M12X20 UNI 5739 8.8	1
029	EL.40049.00	VALVE SB 25	1
030	EL.10072.00	VALVE	2
031	EL.30044.00	RACORD TN 92-12 LR	4
032	ELC450701960	CHAIN BL834	2
033	EL.10082.00	CHAIN PIN BL634	4
034	ELC7383	"CAP TN185GG-1/2""	1
035	ELC7718	NUT M12 UNI 5589-65	4
036	EL.40056.00	FLAT WASHER D12 UNI6593	2
037	EL.60144.00	SCREW TE M12X55 UNI 5737 8.8	2
038	ELC9804	STUD M12X20 UNI 5923	4
039	ELCOP002	PIN 2.5X20 UNI1336 RICOTTA	8
040	ELCOP005	PIN 3.5X25 UNI 1336	2

09. MAST 3.30M DUPLEX

04. HYDRAULIC SYSTEM

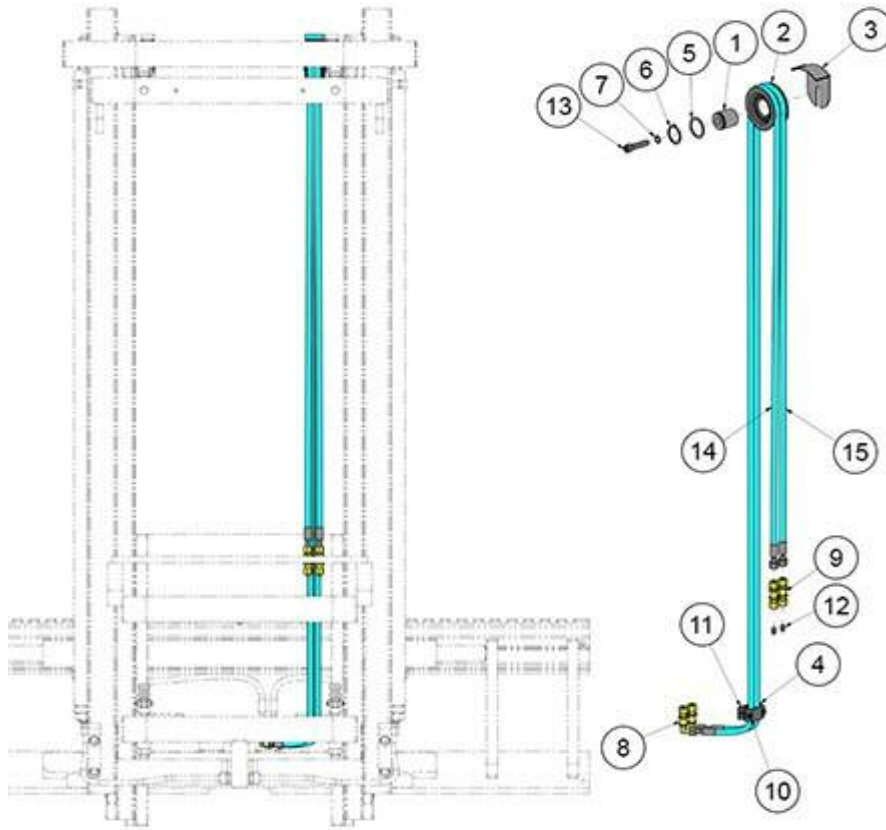


FIGURE	REFERENCE	DENOMINATION	AMOUNT
001	EL.10138.00	AXLE CIL/ROS	1
002	EL.40053.00	HOSE PULLEY	1
003	EL.40120.00	BRACKET ANTI-DERAILMENT	1
004	EL.60050.00	CLAMP	2
005	EL.10155.00	WASHER ADJUST.	1
006	EL.10034.00	O RING DIN471 E40	1
007	EL.10157.00	WASHER SCHNORR D12 DIN7980	1
008	ELC3074	RACORD PIPE SLEEVE 90 TN 118-8 L	2
009	EL.10159.00	RACORD PIPE SLEEVE TN 102-8 L	2
010	EL.60137.00	SCREW M6x25 UNI 5931 8.8	2
011	EL.60153.00	SUPPORT TUBE FLANGE PLATE	1
012	ELC9154	CAP TN324-8LS	2
013	ELC9204	SCREW M12x50 UNI 5931 8.8	1
014	EL90839103300	"AUXILIARY HOSE 1/4""	1
015	EL90839103300	"AUXILIARY HOSE 1/4""	1

09. MAST 3.30M DUPLEX
05. SIDE-SHIFT PANEL 1600/1260MM

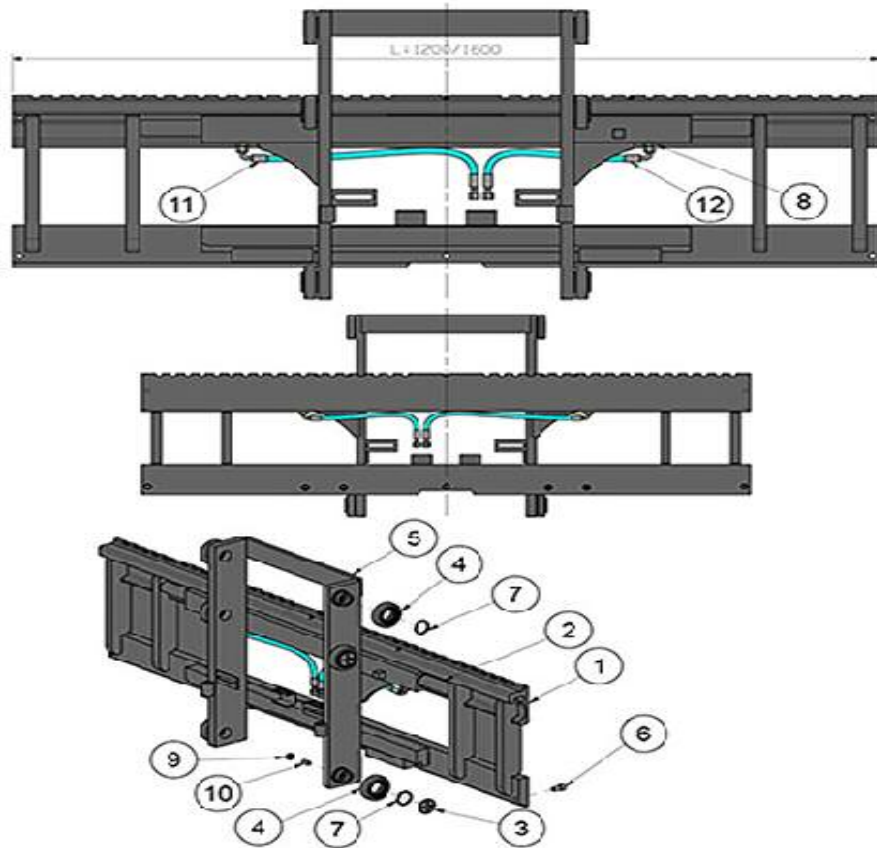


FIGURE	REFERENCE	DENOMINATION	AMOUNT
001	EL93223901260	SHIFT CARRIER FEM2 1260	1
003	EL948668	SHOCK ABSORVER D48	4
004	EL950589	BEARING D78	6
005	EL966072	BACK FORK CARRIAGE T.07 / 1-900 FEM 3	1
006	EL.60103.00	SCREW	3
007	EL.10034.00	O RING DIN471 E40	6
008	EL.50048.00	FITTING TN 92-8 LR	2
009	ELC7718	NUT M12 UNI 5589-65	4
010	ELC9804	STUD M12X20 UNI 5923	4
011	EL92908200470	"AUXILIARY HOSE 1/4""	1
012	EL92908200330	AUXILIARY HOSE 1/4	1

09. MAST 3.30M DUPLEX

06. HYDRAULIC 4TH VALVE

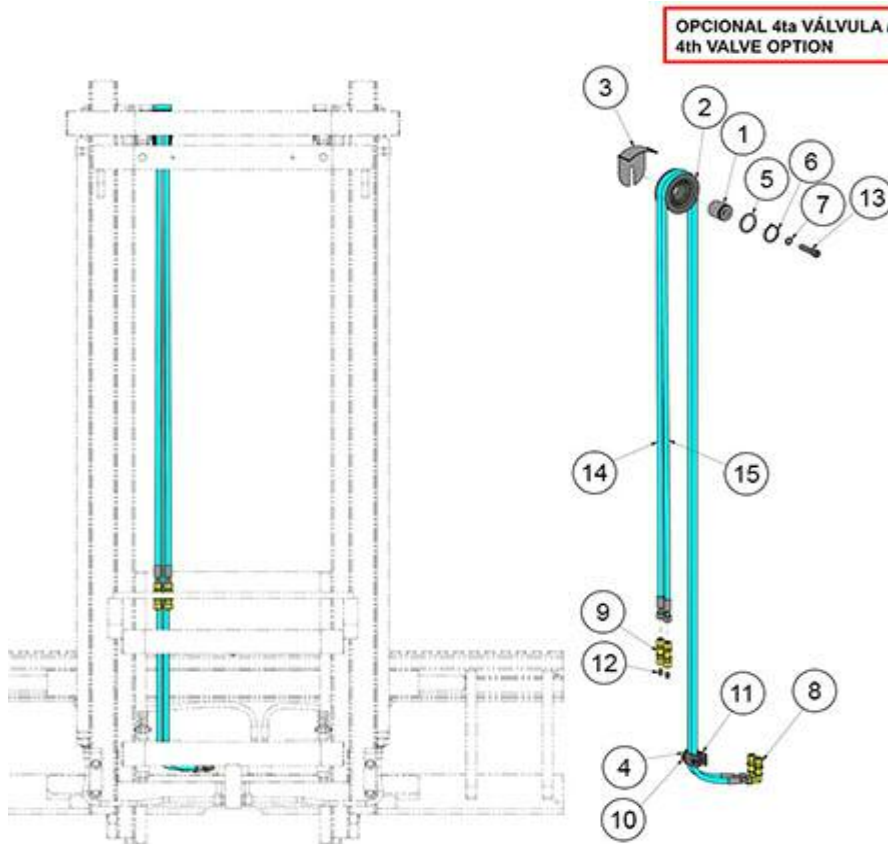


FIGURE	REFERENCE	DENOMINATION	AMOUNT
0	20.09035.02	KIT 4TH VALVE DUPLEX 3.30M	1
001	EL.10138.00	AXLE CIL/ROS	1
002	EL.40053.00	HOSE PULLEY	1
003	EL.40120.00	BRACKET ANTI-DERAILMENT	1
004	EL.60050.00	CLAMP	2
005	EL.10155.00	WASHER ADJUST.	1
006	EL.10034.00	O RING DIN471 E40	1
007	EL.10157.00	WASHER SCHNORR D12 DIN7980	1
008	ELC3074	RACORD PIPE SLEEVE 90 TN 118-8 L	2
009	EL.10159.00	RACORD PIPE SLEEVE TN 102-8 L	2
010	EL.60137.00	SCREW M6x25 UNI 5931 8.8	2
011	EL.60153.00	SUPPORT TUBE FLANGE PLATE	1
012	ELC9154	CAP TN324-8LS	2
013	ELC9204	SCREW M12x50 UNI 5931 8.8	1
014	EL90839103300	"AUXILIARY HOSE 1/4""	1
015	EL90839103300	"AUXILIARY HOSE 1/4""	1
KIT	24.90350RE26	INSTALLATION KIT 4TH VALVE TRIPLEX 3.30M	1

09. MAST 3.70M TRIPLEX

01. FULL MAST

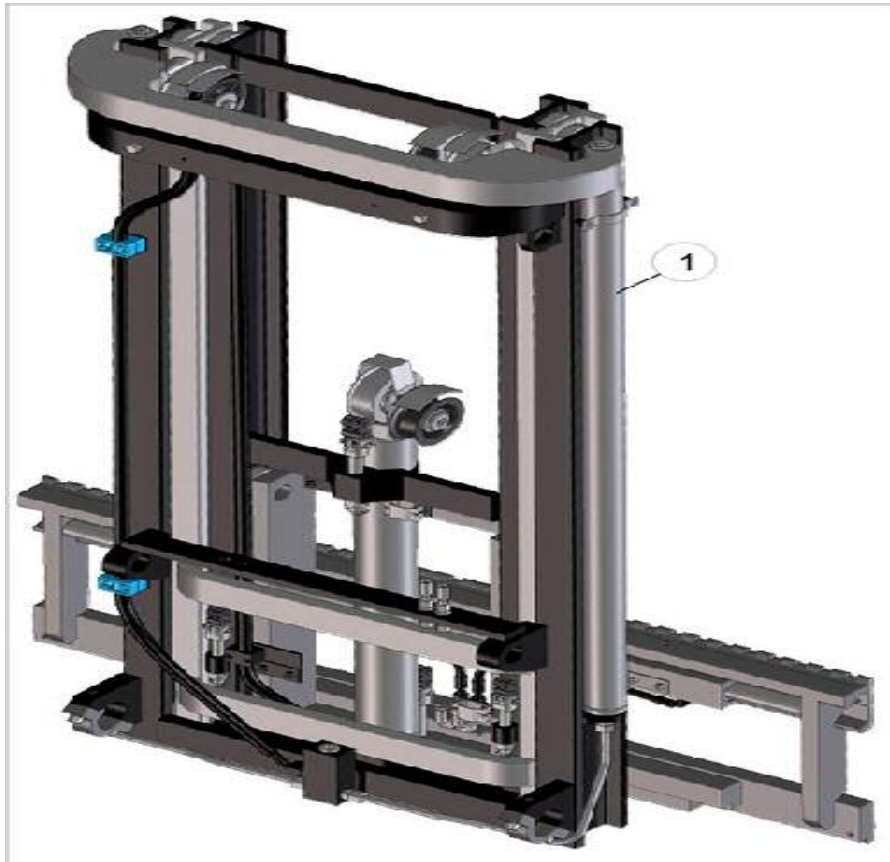


FIGURE	REFERENCE	DENOMINATION	AMOUNT
001	20.12203.02	TRIPLEX MAST 6,8M. USA MASTIL 3.70M TRIPLE TAB 1260	1

09. MAST 3.70M TRIPLEX

02. MASTS AND SIDE SHIFT



FIGURE	REFERENCE	DENOMINATION	AMOUNT
001	EL96361501730	OUTER MAST 3.70M	1
002	EL96362101730	INTERMEDIATE MAST 3.70M	1
003	EL96365301730	INTERIOR MAST 3.70M	1
004	EL963622F1260	COMPLETE SIDE SHIFT	1

09. MAST 3.70M TRIPLEX

03. MAST COMPONENTS

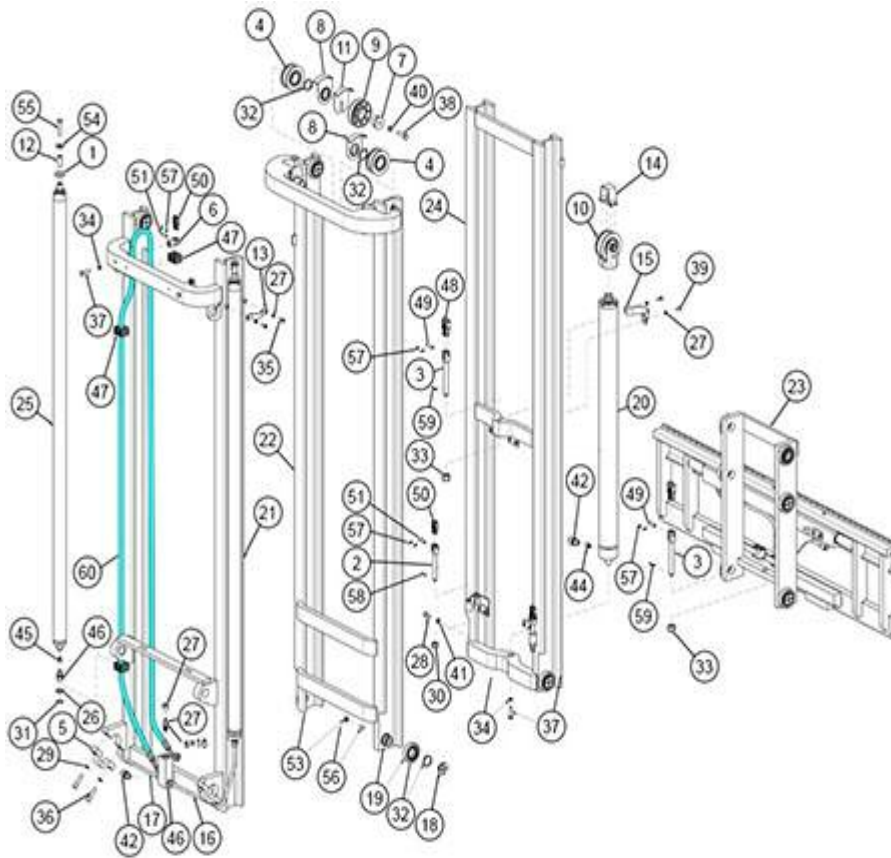


FIGURE	REFERENCE	DENOMINATION	AMOUNT
001	EL.50037.00	CONVEX WASHER D25 DIN6319C	2
002	EL.10083.00	CHAIN ADJUSTABLE TENSOR FOR BL634	2
003	EL.60001.00	CHAIN ANCHOR	2
004	EL.10108.00	PULLEY	2
005	EL.10239.00	CLAMP MAST	2
006	EL.30006.00	FIXED TENSOR FOR BL634	2
007	EL.30068.00	PULLEY BOLT PIPE	1
008	EL.10145.00	GUIDE	2
009	EL.30127.00	PULLEY OIL PIPES	1
010	EL.50061.00	INTEGRAL SUPPORT	1
011	EL.50062.00	BRACKET ANTI-DERAILMENT FOR TUBE	1
012	EL.50027.00	SPACER TUBE L.38	2
013	EL926977	LATERAL CYLINDER SUPPORT	2
014	EL928349	ASSEMBLY COMPONENT	1
015	EL933258	CYLINDER SUPPORT DE.80	1
016	EL947257	RIGID PIPE D12	1
017	EL947258	RIGID PIPE D12	1
018	EL948668	SHOCK ABSORVER D48	8

09. MAST 3.70M TRIPLEX
03. MAST COMPONENTS

FIGURE	REFERENCE	DENOMINATION	AMOUNT
019	EL950589	BEARING D78	8
020	EL95649900640	FREE LIFT CYLINDER	1
021	EL96361501730	OUTER MAST 3.70M	1
022	EL96362101730	INTERMEDIATE MAST 3.70M	1
023	EL963622F1260	COMPLETE SIDE SHIFT	1
024	EL96365301730	INTERIOR MAST 3.70M	1
025	EL96366401210	MAST CYLINDER	1
026	EL.10032.00	WASHER ADJUST.	2
027	ELC2504	SPRING WASHER D8 UNI 1751	6
028	EL.40034.00	RACORD	1
029	ELC2516	SPRING WASHER D12 UNI 1751	4
030	ELC2523	SELF LOCKING NUT	2
031	EL.10047.00	RING	2
032	EL.10034.00	O RING DIN471 E40	2
033	EL.50065.00	NUT	2
034	EL.50030.00	WASHER D10	3
035	EL.10080.00	SCREW	4
036	EL.50057.00	KNOB	4
037	EL.50066.00	SCREW TE M10X40 UNI 5737 8.8	3
038	EL.50067.00	SCREW TE M12X50 UNI 5737 8.8	1
039	EL.10111.00	SCREW TE M8X16 UNI 5739 8.8	2
040	EL.50033.00	FLAT WASHER D12 UNI6592	1
041	EL.10157.00	WASHER SCHNORR D12 DIN7980	1
042	EL.10174.00	RACCORD TN 92-15 LR	2
043	EL.30135.00	RETENTION VALVE	1
044	EL.50081.00	VALVE	1
045	EL.10072.00	VALVE	2
046	EL.30044.00	RACCORD TN 92-12 LR	4
047	EL.30117.00	CLAMP SP320PPIS	4
048	ELC450401050	CARRIAGE CHAIN BL634	1
049	EL.60135.00	CHAIN PIN	2
050	ELC450701580	CHAIN BL834	2
051	EL.10082.00	CHAIN PIN BL634	4
052	ELC7383	"CAP TN185GG-1/2""	1
053	ELC7718	NUT M12 UNI 5589-65	8
054	EL.40056.00	FLAT WASHER D12 UNI6593	2

09. MAST 3.70M TRIPLEX

03. MAST COMPONENTS

FIGURE	REFERENCE	DENOMINATION	AMOUNT
055	EL.60144.00	SCREW TE M12X55 UNI 5737 8.8	2
056	ELC9804	STUD M12X20 UNI 5923	8
057	ELCOP002	PIN 2.5X20 UNI1336 RICOTTA	12
058	ELCOP005	PIN 3.5X25 UNI 1336	2
059	ELCOP006	PIN 3.5X36 UNI 1336	2
060	EL92665603350	"FLEXIBLE HOSE 1/2""	1

09. MAST 3.70M TRIPLEX

04. HYDRAULIC SYSTEM

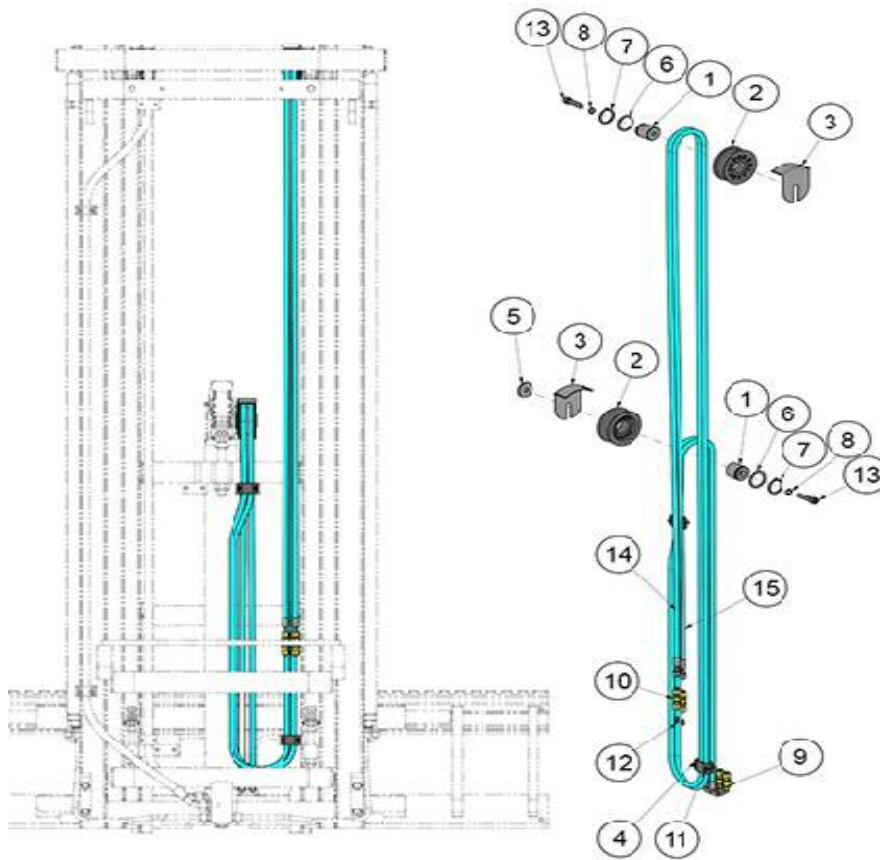


FIGURE	REFERENCE	DENOMINATION	AMOUNT
001	EL.10138.00	AXLE CIL/ROS	2
002	EL.40053.00	HOSE PULLEY	2
003	EL.40120.00	BRACKET ANTI-DERAILMENT	1
004	EL.60050.00	CLAMP	2
005	EL.60151.00	PULLEY FIXING WASHER	1
006	EL.10155.00	WASHER ADJUST.	2
007	EL.10034.00	O RING DIN471 E40	2
008	EL.10157.00	WASHER SCHNORR D12 DIN7980	2
009	ELC3074	RACORD PIPE SLEEVE 90 TN 118-8 L	2
010	EL.10159.00	RACORD PIPE SLEEVE TN 102-8 L	2
011	EL.60137.00	SCREW M6x25 UNI 5931 8.8	4
012	ELC9154	CAP TN324-8LS	2
013	ELC9204	SCREW M12x50 UNI 5931 8.8	2
014	EL95775304250	"AUXILIARY HOSE 1/4""	1
015	EL95775304250	"AUXILIARY HOSE 1/4""	1

09. MAST 3.70M TRIPLEX

05. SIDE-SHIFT PANEL 1600/1260MM

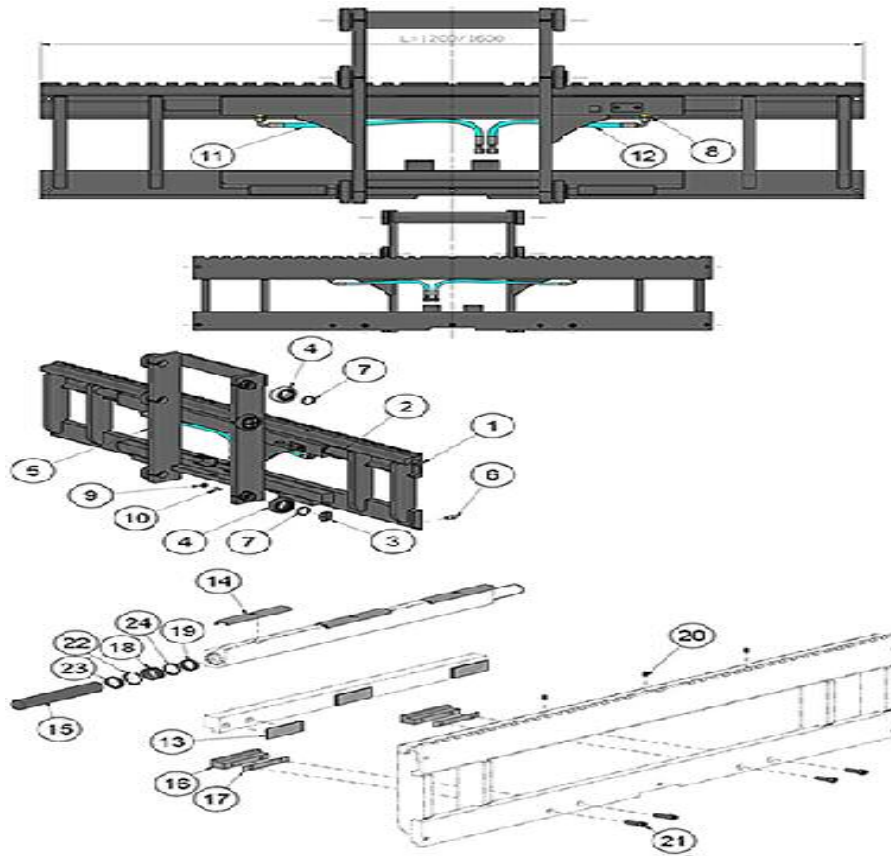


FIGURE	REFERENCE	DENOMINATION	AMOUNT
001	EL93223901260	SHIFT CARRIER FEM2 1260	1
003	EL948668	SHOCK ABSORVER D48	4
004	EL950589	BEARING D78	6
005	EL963655	BACK FORK CARRIAGE T.07 / 1-900 FEM 2	1
006	EL.60103.00	SCREW	3
007	EL.10034.00	O RING DIN471 E40	6
008	EL.50048.00	FITTING TN 92-8 LR	2
009	ELC7718	NUT M12 UNI 5589-65	4
010	ELC9804	STUD M12X20 UNI 5923	4
011	EL92908200450	AUXILIARY HOSE 1/4	1
012	EL92908200330	AUXILIARY HOSE 1/4	1
013	EL.40027.00	LOWER PAD RUBBING	3
014	EL.50038.00	PAD RUBBING	3
015	EL93220600270	STEM D36	2
016	EL937455	LOWER HOOK	2
017	EL937456	HOOK THICKNESS	2
018	EL938345	BUSHING	2
019	ELC2320	NOT AVAILABLE	2

09. MAST 3.70M TRIPLEX
05. SIDE-SHIFT PANEL 1600/1260MM

FIGURE	REFERENCE	DENOMINATION	AMOUNT
020	ELC2540	GREASE M6	3
021	EL.50050.00	SCREW DIN912 M12X35 8.8	4
022	ELC3322	SEEGER I 46 UNI 7437	2
023	ELC9408	NOT AVAILABLE	2
024	ELC9409	NOT AVAILABLE	2
025	ELC9589	GASKET KIT CYLINDER	1

09. MAST 3.70M TRIPLEX

06. HYDRAULIC 4TH VALVE

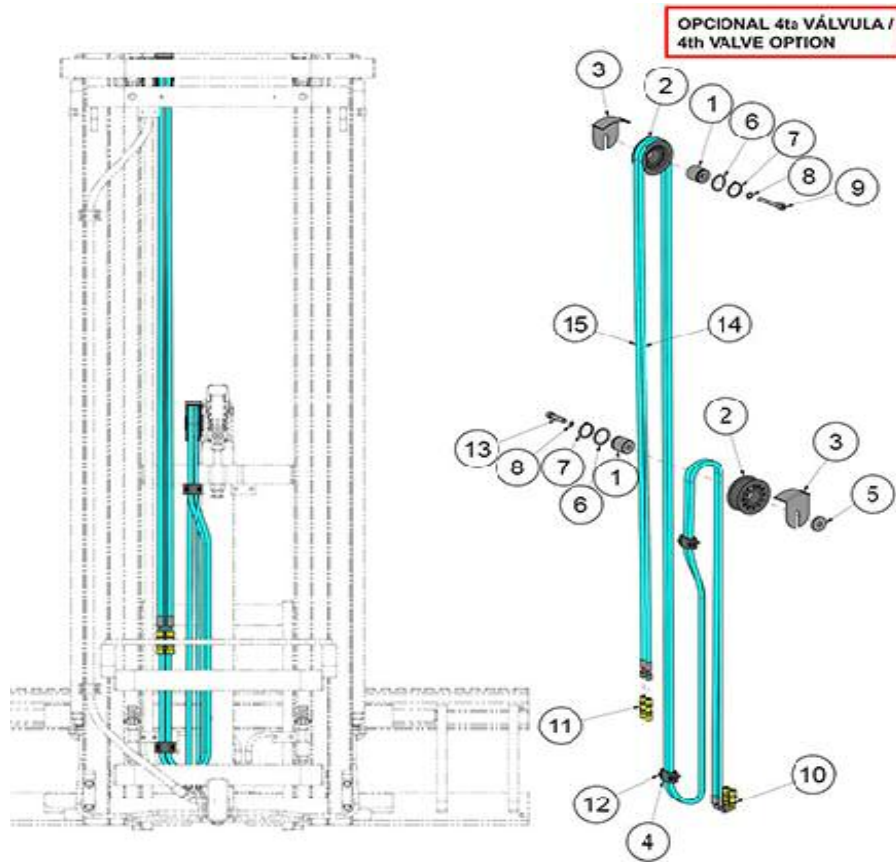


FIGURE	REFERENCE	DENOMINATION	AMOUNT
0	20.09036.02	KIT 4th VALVE TRIPLEX 3.70M	1
001	EL.10138.00	AXLE CIL/ROS	2
002	EL.40053.00	HOSE PULLEY	2
003	EL.40120.00	BRACKET ANTI-DERAILMENT	2
004	EL.60050.00	CLAMP	4
005	EL.60151.00	PULLEY FIXING WASHER	1
006	EL.10155.00	WASHER ADJUST.	2
007	EL.10034.00	O RING DIN471 E40	2
008	EL.10157.00	WASHER SCHNORR D12 DIN7980	2
009	ELC2975	SCREW TCEI M12X80 UNI 5931 8.8	1
010	ELC3074	RACORD PIPE SLEEVE 90 TN 118-8 L	2
011	EL.10159.00	RACORD PIPE SLEEVE TN 102-8 L	2
012	ELC7748	SCREW TCEI M6X25 UNI 5931 8.8	4
013	ELC9204	SCREW M12x50 UNI 5931 8.8	1
014	EL95775304250	"AUXILIARY HOSE 1/4""	1
015	EL95775304250	"AUXILIARY HOSE 1/4""	1
KIT	24.90350RE27	INSTALLATION KIT 4TH VALVE TRIPLEX 3.70M	1

09. MAST 4.30M TRIPLEX

01. FULL MAST

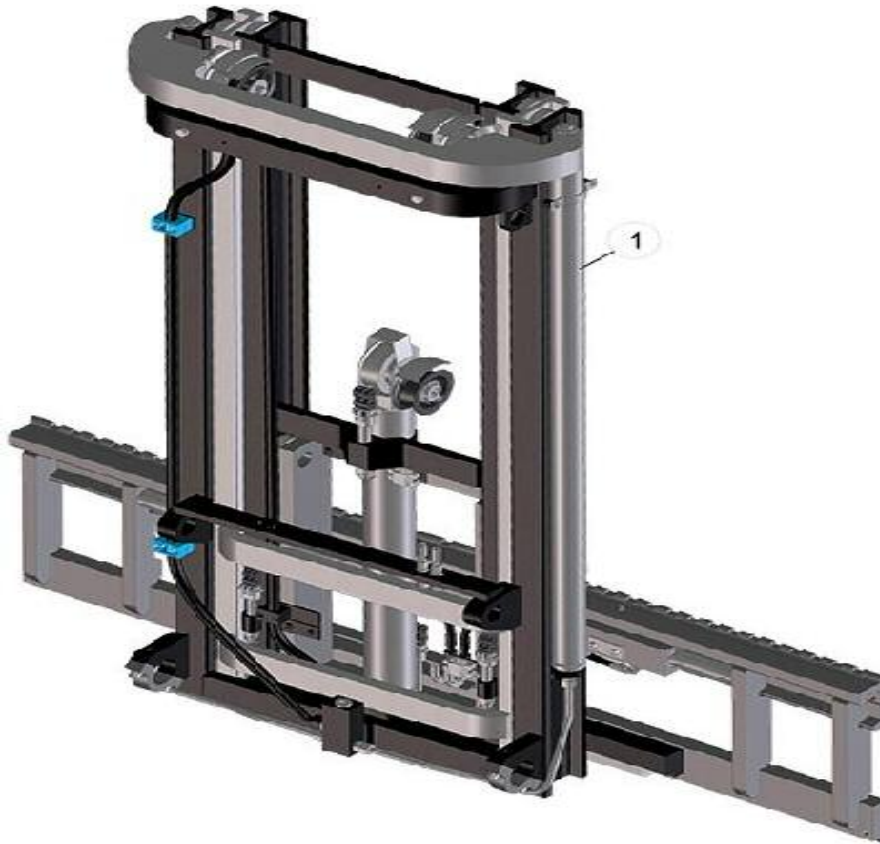


FIGURE	REFERENCE	DENOMINATION	AMOUNT
001	20.12206.01	TRIPLEX MAST 6,8M. USA MASTIL TRIPLE 4.30M TAB 1600	1
001	20.12206.01	TRIPLEX MAST 6,8M. USA MASTIL TRIPLE 4.30M TAB 1600	1

09. MAST 4.30M TRIPLEX

02. MASTS AND SIDE SHIFT



FIGURE	REFERENCE	DENOMINATION	AMOUNT
001	EL96361501930	OUTER MAST 4.30M	1
001	EL96361501930	OUTER MAST 4.30M	1
002	EL96362101930	INTERMEDIATE MAST 4.30M	1
002	EL96362101930	INTERMEDIATE MAST 4.30M	1
003	EL96365301930	INTERIOR MAST 4.30M	1
003	EL96365301930	INTERIOR MAST 4.30M	1
004	EL963622F1260	COMPLETE SIDE SHIFT	1
004	EL963622F1260	COMPLETE SIDE SHIFT	1

09. MAST 4.30M TRIPLEX

03. MAST COMPONENTS

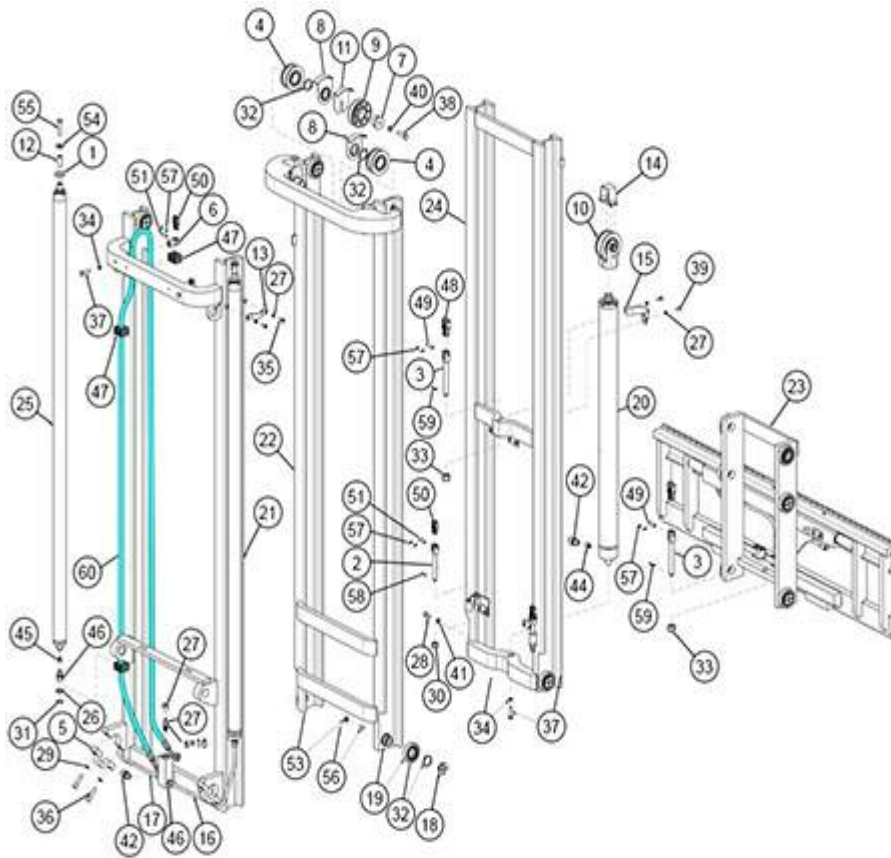


FIGURE	REFERENCE	DENOMINATION	AMOUNT
001	EL.50037.00	CONVEX WASHER D25 DIN6319C	2
002	EL.10083.00	CHAIN ADJUSTABLE TENSOR FOR BL634	2
003	EL.60001.00	CHAIN ANCHOR	2
004	EL.10108.00	PULLEY	2
005	EL.10239.00	CLAMP MAST	2
006	EL.30006.00	FIXED TENSOR FOR BL634	2
006	EL.30006.00	FIXED TENSOR FOR BL634	2
007	EL.30068.00	PULLEY BOLT PIPE	1
007	EL.30068.00	PULLEY BOLT PIPE	1
008	EL.10145.00	GUIDE	2
009	EL.30127.00	PULLEY OIL PIPES	1
010	EL.50061.00	INTEGRAL SUPPORT	1
011	EL.50062.00	BRACKET ANTI-DERAILMENT FOR TUBE	1
012	EL.50027.00	SPACER TUBE L.38	2
013	EL926977	LATERAL CYLINDER SUPPORT	2
014	EL928349	ASSEMBLY COMPONENT	1
015	EL933258	CYLINDER SUPPORT DE.80	1
016	EL947257	RIGID PIPE D12	1

09. MAST 4.30M TRIPLEX
03. MAST COMPONENTS

FIGURE	REFERENCE	DENOMINATION	AMOUNT
017	EL947258	RIGID PIPE D12	1
018	EL948668	SHOCK ABSORVER D48	8
019	EL950589	BEARING D78	8
020	EL95649900740	FREE LIFT CYLINDER	1
021	EL96361501930	OUTER MAST 4.30M	1
022	EL96362101930	INTERMEDIATE MAST 4.30M	1
023	EL963622F1260	COMPLETE SIDE SHIFT	1
024	EL96365301930	INTERIOR MAST 4.30M	1
025	EL96366401410	MAST CYLINDER	2
026	EL.10032.00	WASHER ADJUST.	2
027	ELC2504	SPRING WASHER D8 UNI 1751	6
028	EL.40034.00	RACORD	1
029	ELC2516	SPRING WASHER D12 UNI 1751	4
030	ELC2523	SELF LOCKING NUT	2
031	EL.10047.00	RING	2
032	EL.10034.00	O RING DIN471 E40	2
033	EL.50065.00	NUT	2
034	EL.50030.00	WASHER D10	3
035	EL.10080.00	SCREW	4
035	EL.10080.00	SCREW	4
036	EL.50057.00	KNOB	4
037	EL.50066.00	SCREW TE M10X40 UNI 5737 8.8	3
038	EL.50067.00	SCREW TE M12X50 UNI 5737 8.8	1
039	EL.10111.00	SCREW TE M8X16 UNI 5739 8.8	2
040	EL.50033.00	FLAT WASHER D12 UNI6592	1
041	EL.10157.00	WASHER SCHNORR D12 DIN7980	1
041	EL.10157.00	WASHER SCHNORR D12 DIN7980	1
042	EL.10174.00	RACCORD TN 92-15 LR	2
043	EL.30135.00	RETENTION VALVE	1
044	EL.50081.00	VALVE	1
045	EL.10072.00	VALVE	2
046	EL.30044.00	RACORD TN 92-12 LR	4
046	EL.30044.00	RACORD TN 92-12 LR	4
047	EL.30117.00	CLAMP SP320PPIS	4
048	ELC450401150	CHAIN BL834	1
049	EL.60135.00	CHAIN PIN	2

09. MAST 4.30M TRIPLEX
03. MAST COMPONENTS

FIGURE	REFERENCE	DENOMINATION	AMOUNT
050	ELC450401150	CHAIN BL834	2
051	EL.10082.00	CHAIN PIN BL634	4
052	ELC7383	"CAP TN185GG-1/2""	1
053	ELC7718	NUT M12 UNI 5589-65	8
054	EL.40056.00	FLAT WASHER D12 UNI6593	2
055	EL.60144.00	SCREW TE M12X55 UNI 5737 8.8	2
056	ELC9804	STUD M12X20 UNI 5923	8
057	ELCOP002	PIN 2.5X20 UNI1336 RICOTTA	12
058	ELCOP005	PIN 3.5X25 UNI 1336	2
059	ELCOP006	PIN 3.5X36 UNI 1336	2
060	EL92665603750	"FLEXIBLE HOSE 1/2""	1

09. MAST 4.30M TRIPLEX

04. HYDRAULIC SYSTEM

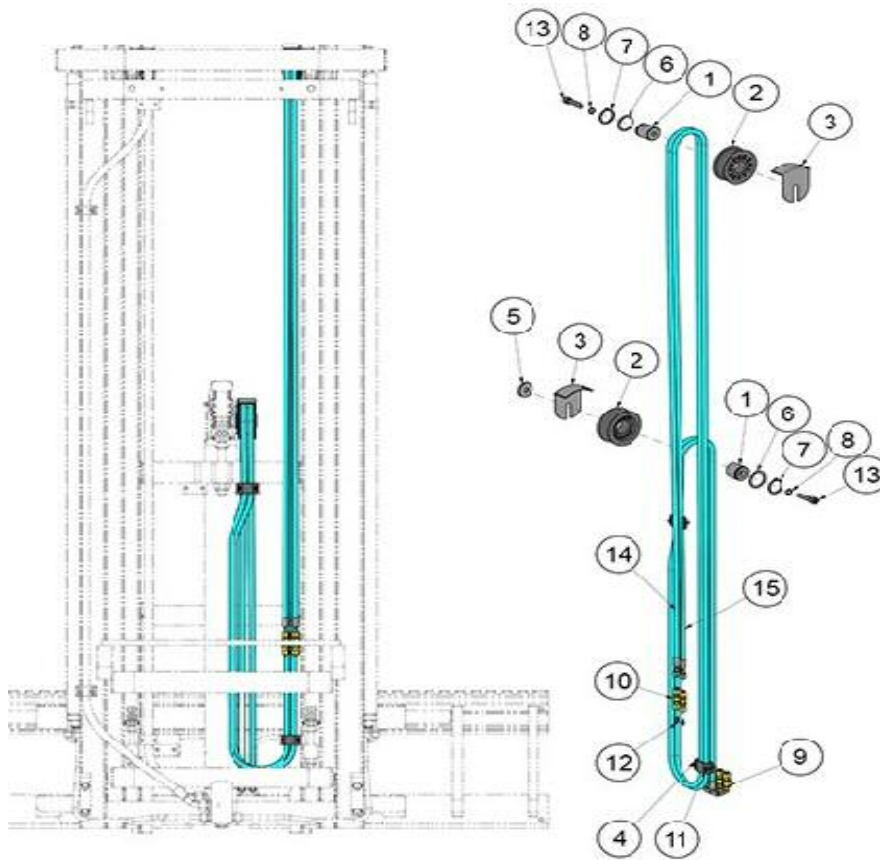


FIGURE	REFERENCE	DENOMINATION	AMOUNT
001	EL.10138.00	AXLE CIL/ROS	2
002	EL.40053.00	HOSE PULLEY	2
003	EL.40120.00	BRACKET ANTI-DERAILMENT	1
004	EL.60050.00	CLAMP	2
005	EL.60151.00	PULLEY FIXING WASHER	1
006	EL.10155.00	WASHER ADJUST.	2
007	EL.10034.00	O RING DIN471 E40	2
008	EL.10157.00	WASHER SCHNORR D12 DIN7980	2
009	ELC3074	RACORD PIPE SLEEVE 90 TN 118-8 L	2
010	EL.10159.00	RACORD PIPE SLEEVE TN 102-8 L	2
011	EL.60137.00	SCREW M6x25 UNI 5931 8.8	4
012	ELC9154	CAP TN324-8LS	2
013	ELC9204	SCREW M12x50 UNI 5931 8.8	2
014	EL95775304850	"AUXILIARY HOSE 1/4""	1
015	EL95775304850	"AUXILIARY HOSE 1/4""	1

09. MAST 4.30M TRIPLEX
05. SIDE-SHIFT PANEL 1600/1260MM

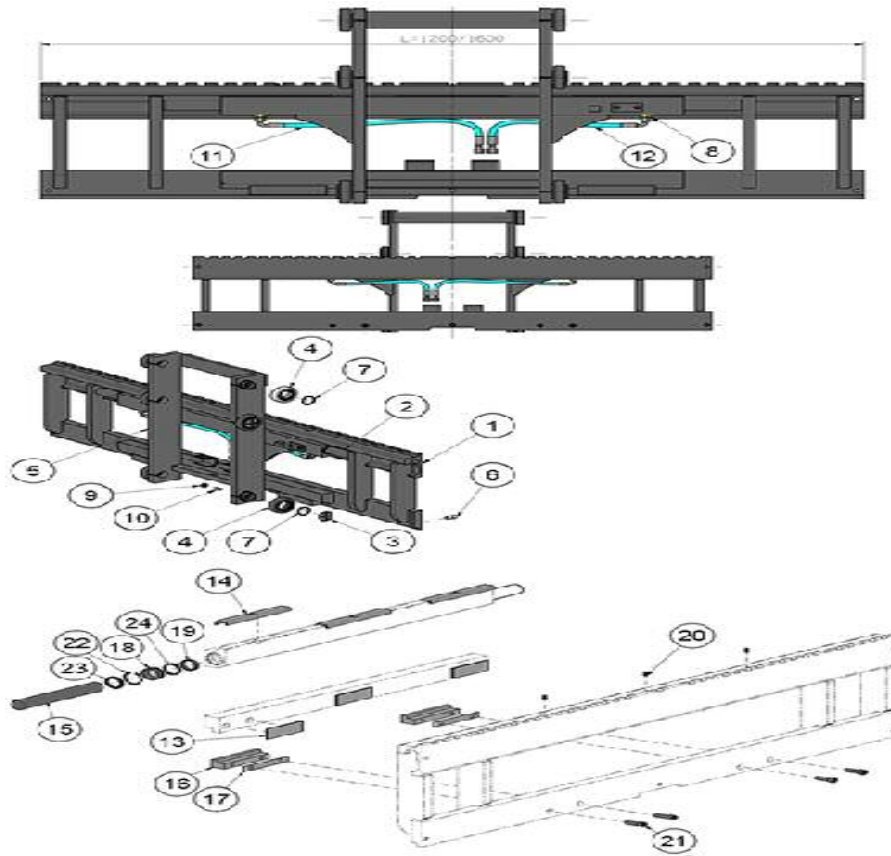


FIGURE	REFERENCE	DENOMINATION	AMOUNT
001	EL93223901600	SHIFT CARRIER FEM2 1600	1
003	EL948668	SHOCK ABSORVER D48	4
004	EL950589	BEARING D78	6
005	EL963655	BACK FORK CARRIAGE T.07 / 1-900 FEM 2	1
006	EL.60103.00	SCREW	3
007	EL.10034.00	O RING DIN471 E40	6
008	EL.50048.00	FITTING TN 92-8 LR	2
009	ELC7718	NUT M12 UNI 5589-65	4
010	ELC9804	STUD M12X20 UNI 5923	4
011	EL92908200450	AUXILIARY HOSE 1/4	1
012	EL92908200330	AUXILIARY HOSE 1/4	1
013	EL.40027.00	LOWER PAD RUBBING	3
014	EL.50038.00	PAD RUBBING	3
015	EL93220600270	STEM D36	2
016	EL937455	LOWER HOOK	2
017	EL937456	HOOK THICKNESS	2
018	EL938345	BUSHING	2
019	ELC2320	NOT AVAILABLE	2

09. MAST 4.30M TRIPLEX
05. SIDE-SHIFT PANEL 1600/1260MM

FIGURE	REFERENCE	DENOMINATION	AMOUNT
020	ELC2540	GREASE M6	3
021	EL.50050.00	SCREW DIN912 M12X35 8.8	4
022	ELC3322	SEEGER I 46 UNI 7437	2
023	ELC9408	NOT AVAILABLE	2
024	ELC9409	NOT AVAILABLE	2
025	ELC9589	GASKET KIT CYLINDER	1

09. MAST 4.30M TRIPLEX

06. HYDRAULIC 4TH VALVE

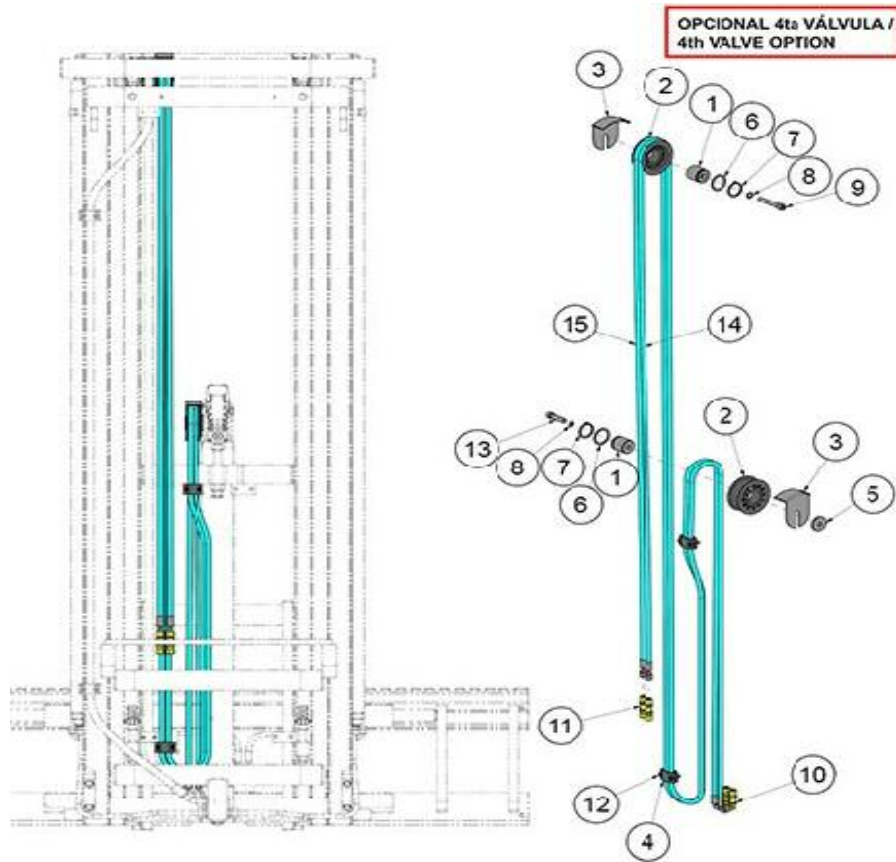


FIGURE	REFERENCE	DENOMINATION	AMOUNT
0	20.09043.02	KIT 4TH VALVE TRIPLEX 4.30M	1
001	EL.10138.00	AXLE CIL/ROS	2
002	EL.40053.00	HOSE PULLEY	2
003	EL.40120.00	BRACKET ANTI-DERAILMENT	2
004	EL.60050.00	CLAMP	4
005	EL.60151.00	PULLEY FIXING WASHER	1
006	EL.10155.00	WASHER ADJUST.	2
007	EL.10034.00	O RING DIN471 E40	2
008	EL.10157.00	WASHER SCHNORR D12 DIN7980	2
009	ELC2975	SCREW TCEI M12X80 UNI 5931 8.8	1
010	ELC3074	RACORD PIPE SLEEVE 90 TN 118-8 L	2
011	EL.10159.00	RACORD PIPE SLEEVE TN 102-8 L	2
012	ELC7748	SCREW TCEI M6X25 UNI 5931 8.8	4
013	ELC9204	SCREW M12x50 UNI 5931 8.8	1
014	EL95775304850	"AUXILIARY HOSE 1/4""	1
015	EL95775304850	"AUXILIARY HOSE 1/4""	1
KIT	24.90350RE28	INSTALLATION KIT 4TH VALVE TRIPLEX 4.30M	1

09. MAST 5.40M TRIPLEX

01. FULL MAST

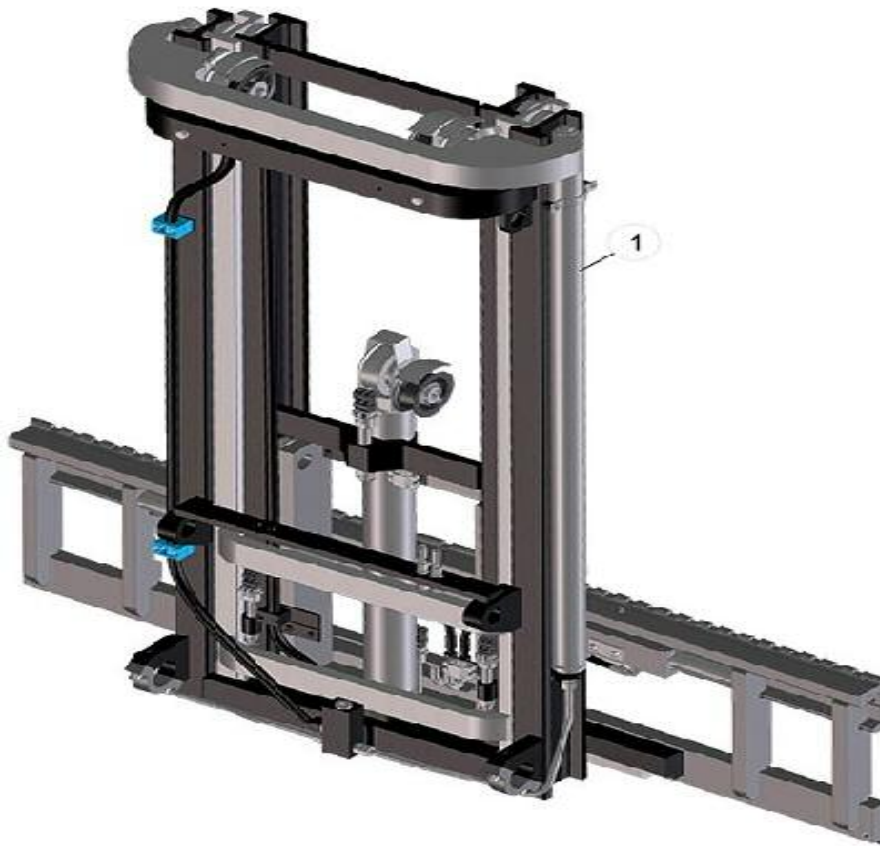


FIGURE	REFERENCE	DENOMINATION	AMOUNT
001	20.12208.01	TRIPLEX MAST 6,8M. USA MASTIL TRIPLE 5.40M TAB 1600	1

09. MAST 5.40M TRIPLEX

02. MASTS AND SIDE SHIFT



FIGURE	REFERENCE	DENOMINATION	AMOUNT
001	EL96361502300	OUTER MAST 5.40M	1
002	EL96362102300	INTERMEDIATE MAST 5.40M	1
003	EL96365302300	INNER MAST 5.40M	1
004	EL963622F1260	COMPLETE SIDE SHIFT	1

09. MAST 5.40M TRIPLEX

03. MAST COMPONENTS

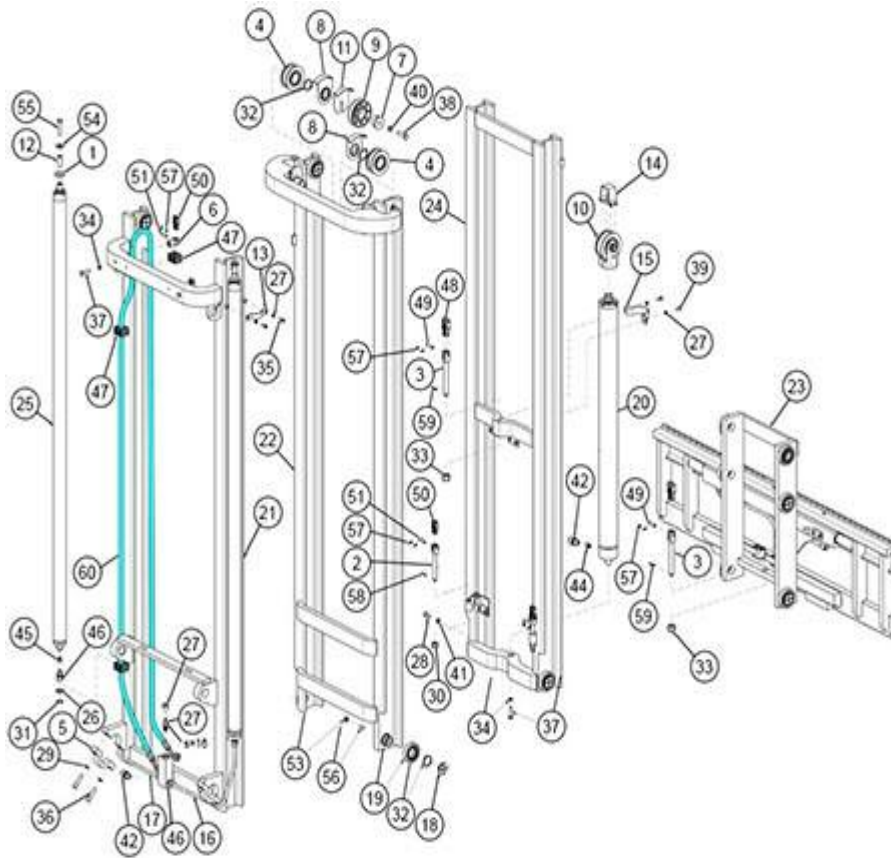


FIGURE	REFERENCE	DENOMINATION	AMOUNT
001	EL.50037.00	CONVEX WASHER D25 DIN6319C	2
002	EL.10083.00	CHAIN ADJUSTABLE TENSOR FOR BL634	2
003	EL.60001.00	CHAIN ANCHOR	2
004	EL.10108.00	PULLEY	2
005	EL.10239.00	CLAMP MAST	2
006	EL.30006.00	FIXED TENSOR FOR BL634	2
007	EL.30068.00	PULLEY BOLT PIPE	1
008	EL.10145.00	GUIDE	2
009	EL.30127.00	PULLEY OIL PIPES	1
010	EL.50061.00	INTEGRAL SUPPORT	1
011	EL.50062.00	BRACKET ANTI-DERAILMENT FOR TUBE	1
012	EL.50027.00	SPACER TUBE L.38	2
013	EL926977	LATERAL CYLINDER SUPPORT	2
014	EL928349	ASSEMBLY COMPONENT	1
015	EL933258	CYLINDER SUPPORT DE.80	1
016	EL947257	RIGID PIPE D12	1
017	EL947258	RIGID PIPE D12	1
018	EL948668	SHOCK ABSORVER D48	8

09. MAST 5.40M TRIPLEX
03. MAST COMPONENTS

FIGURE	REFERENCE	DENOMINATION	AMOUNT
019	EL950589	BEARING D78	8
020	EL95649900925	FREE LIFT CYLINDER	1
021	EL96361502300	OUTER MAST 5.40M	1
022	EL96362102300	INTERMEDIATE MAST 5.40M	1
023	EL963622F1260	COMPLETE SIDE SHIFT	1
024	EL96365302300	INNER MAST 5.40M	1
025	EL96366401780	MAST CYLINDER	1
026	EL.10032.00	WASHER ADJUST.	2
027	ELC2504	SPRING WASHER D8 UNI 1751	6
028	EL.40034.00	RACORD	1
029	ELC2516	SPRING WASHER D12 UNI 1751	4
030	ELC2523	SELF LOCKING NUT	2
031	EL.10047.00	RING	2
032	EL.10034.00	O RING DIN471 E40	2
033	EL.50065.00	NUT	2
034	EL.50030.00	WASHER D10	3
035	EL.10080.00	SCREW	4
036	EL.50057.00	KNOB	4
037	EL.50066.00	SCREW TE M10X40 UNI 5737 8.8	3
038	EL.50067.00	SCREW TE M12X50 UNI 5737 8.8	1
039	EL.10111.00	SCREW TE M8X16 UNI 5739 8.8	2
040	EL.50033.00	FLAT WASHER D12 UNI6592	1
041	EL.10157.00	WASHER SCHNORR D12 DIN7980	1
042	EL.10174.00	RACCORD TN 92-15 LR	2
043	EL.30135.00	RETENTION VALVE	1
044	EL.50081.00	VALVE	1
045	EL.10072.00	VALVE	2
046	EL.30044.00	RACCORD TN 92-12 LR	4
047	EL.30117.00	CLAMP SP320PPIS	4
048	ELC450401350	"CARRIAGE CHAIN BL834 "	1
049	EL.60135.00	CHAIN PIN	2
050	ELC450702160	"CARRIAGE CHAIN BL634 "	2
051	EL.10082.00	CHAIN PIN BL634	4
052	ELC7383	"CAP TN185GG-1/2""	1
053	ELC7718	NUT M12 UNI 5589-65	8
054	EL.40056.00	FLAT WASHER D12 UNI6593	2

09. MAST 5.40M TRIPLEX
03. MAST COMPONENTS

FIGURE	REFERENCE	DENOMINATION	AMOUNT
055	EL.60144.00	SCREW TE M12X55 UNI 5737 8.8	2
056	ELC9804	STUD M12X20 UNI 5923	8
057	ELCOP002	PIN 2.5X20 UNI1336 RICOTTA	12
058	ELCOP005	PIN 3.5X25 UNI 1336	2
059	ELCOP006	PIN 3.5X36 UNI 1336	2
060	EL92665604500	"FLEXIBLE HOSE 1/2""	1

09. MAST 5.40M TRIPLEX

04. HYDRAULIC SYSTEM

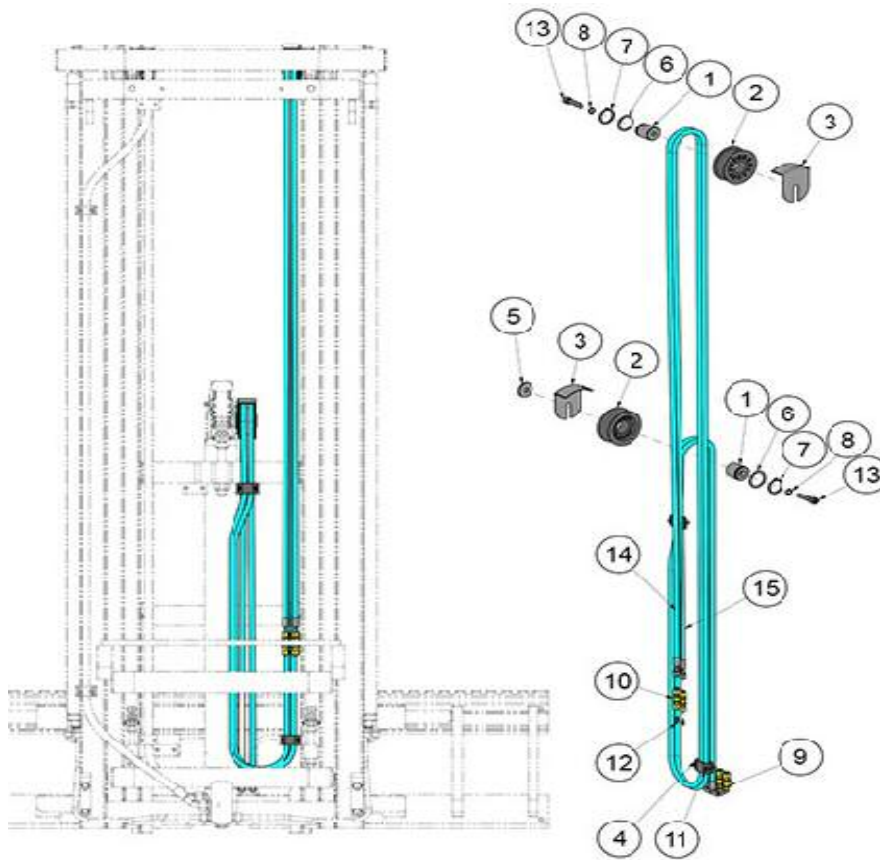


FIGURE	REFERENCE	DENOMINATION	AMOUNT
001	EL.10138.00	AXLE CIL/ROS	2
002	EL.40053.00	HOSE PULLEY	2
003	EL.40120.00	BRACKET ANTI-DERAILMENT	1
004	EL.60050.00	CLAMP	2
005	EL.60151.00	PULLEY FIXING WASHER	1
006	EL.10155.00	WASHER ADJUST.	2
007	EL.10034.00	O RING DIN471 E40	2
008	EL.10157.00	WASHER SCHNORR D12 DIN7980	2
009	ELC3074	RACORD PIPE SLEEVE 90 TN 118-8 L	2
010	EL.10159.00	RACORD PIPE SLEEVE TN 102-8 L	2
011	EL.60137.00	SCREW M6x25 UNI 5931 8.8	4
012	ELC9154	CAP TN324-8LS	2
013	ELC9204	SCREW M12x50 UNI 5931 8.8	2
014	EL95775306100	"AUXILIARY HOSE 1/4""	1
015	EL95775306100	"AUXILIARY HOSE 1/4""	1

09. MAST 5.40M TRIPLEX

05. SIDE-SHIFT PANEL 1600/1260MM

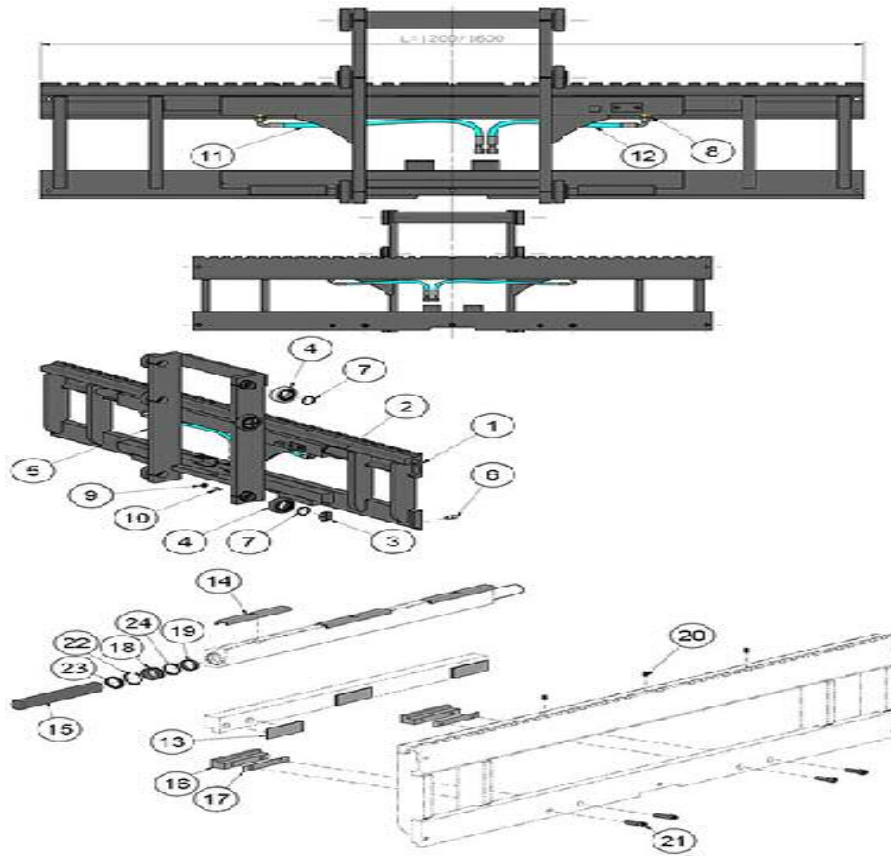


FIGURE	REFERENCE	DENOMINATION	AMOUNT
001	EL93223901600	SHIFT CARRIER FEM2 1600	1
003	EL948668	SHOCK ABSORVER D48	4
004	EL950589	BEARING D78	6
005	EL963655	BACK FORK CARRIAGE T.07 / 1-900 FEM 2	1
006	EL.60103.00	SCREW	3
007	EL.10034.00	O RING DIN471 E40	6
008	EL.50048.00	FITTING TN 92-8 LR	2
009	ELC7718	NUT M12 UNI 5589-65	4
010	ELC9804	STUD M12X20 UNI 5923	4
011	EL92908200450	AUXILIARY HOSE 1/4	1
012	EL92908200340	AUXILIARY HOSE 1/4	1
013	EL.40027.00	LOWER PAD RUBBING	3
014	EL.50038.00	PAD RUBBING	3
015	EL93220600270	STEM D36	2
016	EL937455	LOWER HOOK	2
017	EL937456	HOOK THICKNESS	2
018	EL938345	BUSHING	2
019	ELC2320	NOT AVAILABLE	2

09. MAST 5.40M TRIPLEX
05. SIDE-SHIFT PANEL 1600/1260MM

FIGURE	REFERENCE	DENOMINATION	AMOUNT
020	ELC2540	GREASE M6	3
021	EL.50050.00	SCREW DIN912 M12X35 8.8	4
022	ELC3322	SEEGER I 46 UNI 7437	2
023	ELC9408	NOT AVAILABLE	2
024	ELC9409	NOT AVAILABLE	2

09. MAST 5.40M TRIPLEX

06. HYDRAULIC 4TH VALVE

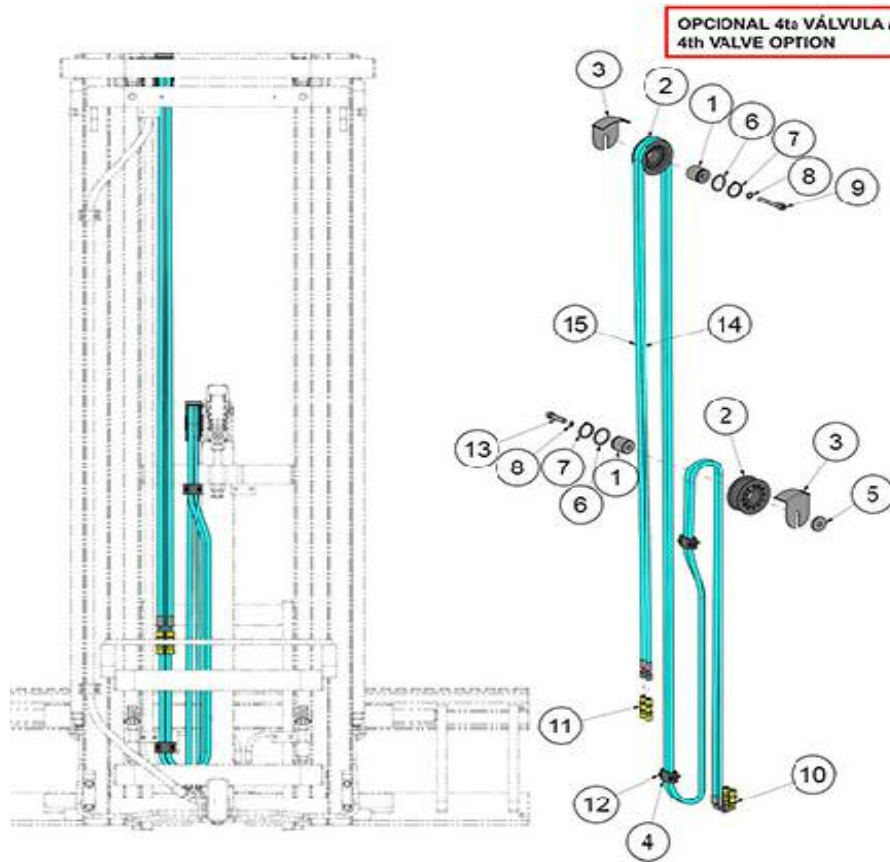


FIGURE	REFERENCE	DENOMINATION	AMOUNT
0	20.09037.02	KIT 4TH VALVE TRIPLEX 5.40M	1
001	EL.10138.00	AXLE CIL/ROS	2
002	EL.40053.00	HOSE PULLEY	2
003	EL.40120.00	BRACKET ANTI-DERAILMENT	2
004	EL.60050.00	CLAMP	4
005	EL.60151.00	PULLEY FIXING WASHER	1
006	EL.10155.00	WASHER ADJUST.	2
007	EL.10034.00	O RING DIN471 E40	2
008	EL.10157.00	WASHER SCHNORR D12 DIN7980	2
009	ELC2975	SCREW TCEI M12X80 UNI 5931 8.8	1
010	ELC3074	RACORD PIPE SLEEVE 90 TN 118-8 L	2
011	EL.10159.00	RACORD PIPE SLEEVE TN 102-8 L	2
012	ELC7748	SCREW TCEI M6X25 UNI 5931 8.8	4
013	ELC9204	SCREW M12x50 UNI 5931 8.8	1
KIT	24.90350RE29	INSTALLATION KIT 4TH VALVE TRIPLEX 5.40M	1

10. HYDRAULIC INSTALLATION DISTRIBUTOR

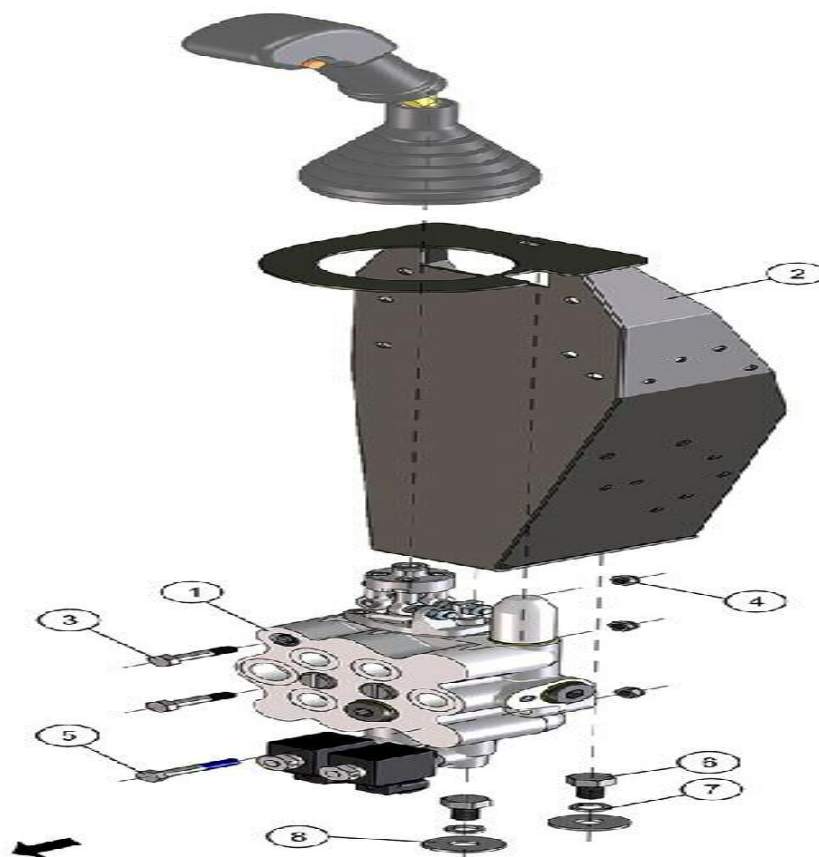


FIGURE	REFERENCE	DENOMINATION	AMOUNT
001	24.10300RE90	CONTROL VALVE 2E	1
002	24.10301.00	FIXING SUPPORT	1
003	604.08040.86	SCREW DIN931	2
004	711.08000.66	NUT DIN982 M8	3
005	604.08050.86	SCREW DIN931	1
006	603.12020.86	SCREW DIN933	2
007	104.12000.00	WASHER DIN7980 D12	2
008	112.12000.66	WASHER DIN9021 D 12X36	2

10. HYDRAULIC INSTALLATION

HYDRAULIC TANK

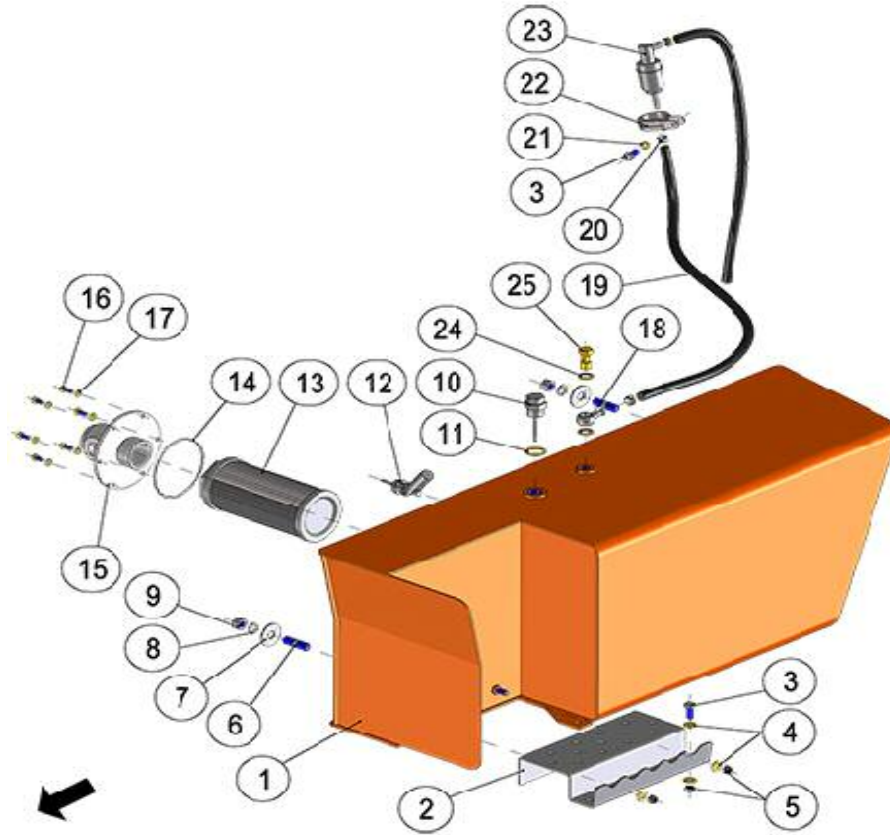


FIGURE	REFERENCE	DENOMINATION	AMOUNT
001	24.10050.01	OIL TANK	1
002	24.10051.00	SHEET	1
003	603.08020.86	SCREW DIN933 M8x20	2
004	101.08000.66	WASHER DIN125 D8	4
005	711.08000.66	NUT DIN982 M8	3
006	01.00102.00	STUD DIN939 * 40 M12x1,75	2
007	112.12000.66	WASHER DIN9021 D 12X36	2
008	104.12000.00	WASHER DIN7980 D12	2
009	701.12000.66	NUT DIN934 M12x1.75	2
010	10.11080.00	ROD OIL LEVEL	1
011	08.00316.01	GASKET MET. BUNA	1
012	43.70261.00	OIL LEVEL INDICATOR BUOY	1
013	58.01810.00	HIDRAULIC CATRIDGE INTANK	1
014	201.95003.50	O-RING DIN3770	1
015	43.70406.00	AD. FILTER SUPPORT	1
016	603.06015.86	SCREW DIN933 M6x15	6
017	104.06000.00	WASHER DIN7980 D6	6
018	45.04106.00	NIPPLE O/TB	1

10. HYDRAULIC INSTALLATION

HYDRAULIC TANK

FIGURE	REFERENCE	DENOMINATION	AMOUNT
019	469.03014.00	HOSE L/P MAT. 8x14	2
020	948.01308.00	SPRING CLAMP Ø13	3
021	104.08000.00	WASHER DIN7980 D8	1
022	830.03008.00	CLAMP LOOP	1
023	45.01526.00	PREFILTER FUEL/HYDRAULIC	1
024	28.00341.00	METALLIC GASKET BUNA D1/4	2
025	28.00340.00	SIMPLE SCREW FITTING 1/4 Gx26	1

10. HYDRAULIC INSTALLATION

OIL TANK

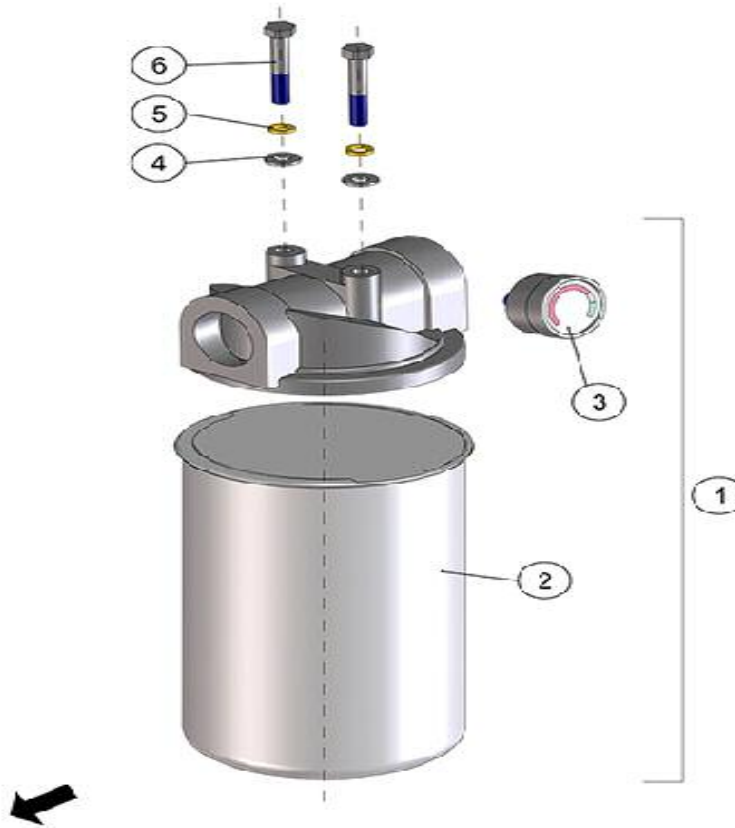


FIGURE	REFERENCE	DENOMINATION	AMOUNT
001	60.20101.00	COMPLETE OIL FILTER	1
002	60.20100.00	FILTER ELEMENT	1
003	60.20102.00	INDICATOR	1
004	101.08000.66	WASHER DIN125 D8	2
005	104.08000.00	WASHER DIN7980 D8	2
006	604.08050.86	SCREW DIN931	2

10. HYDRAULIC INSTALLATION TRANSMISSION DIAGRAM

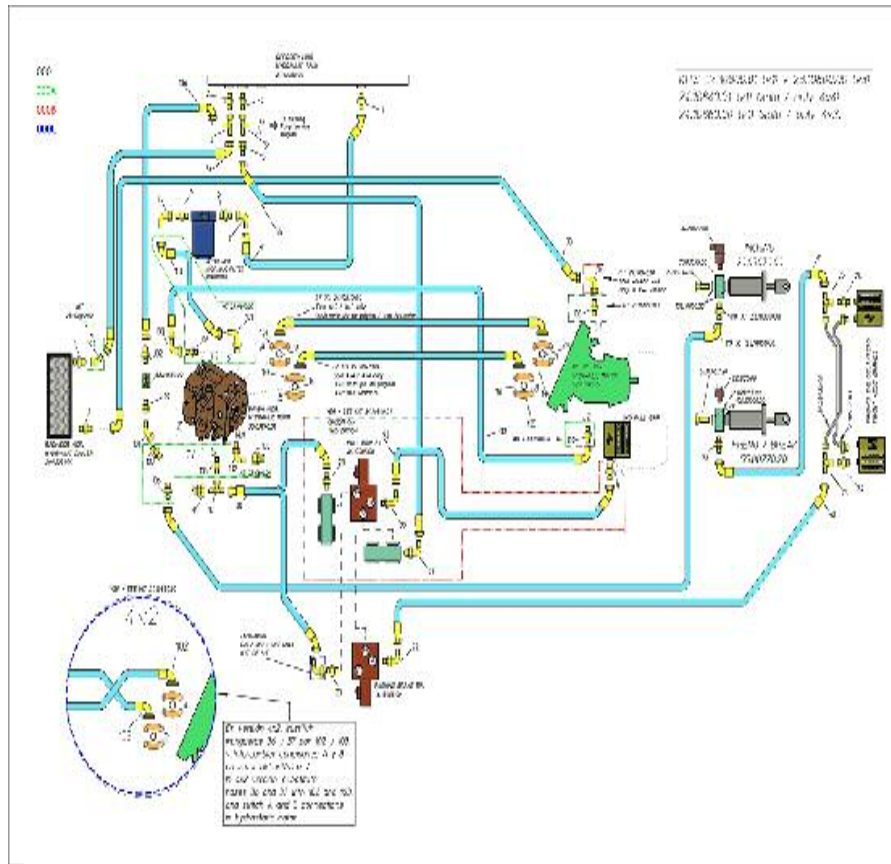


FIGURE	REFERENCE	DENOMINATION	AMOUNT
0	24.10800.01	PIPES KIT	1
000A	23.10800.00	PIPES KIT	1
000B	24.10840.01	PIPES KIT	1
000C	24.10860.00		1
001	12.10301.00	FITTING	1
002	70.10207.00	FITTING	3
003	70.10234.00	FITTING	1
004	46.10824.00	FITTING	1
005	46.10870.00	WASHER	1
006	17.10180.00		2
007	48.10439.00	FITTING	2
010	48.10234.00	"RACOR M/TL MF1/2" BSP / M26X1,5"	1
012	48.10319.00	FITTING M/TL/M -M14x1,5	1
013	46.10220.00	FITTING M16x2-TLM14	1
016	70.10211.00	FITTING M/M M30-3/4GAS	2
018	48.10223.00	FITTING	1
020	46.10844.00	O-RING DIN6505 SAE 1	2
022	48.10313.00	FITTING	1

10. HYDRAULIC INSTALLATION TRANSMISSION DIAGRAM

FIGURE	REFERENCE	DENOMINATION	AMOUNT
023	48.10378.00	FITTING	1
024	10.16766.00	RACOR	2
025	60.13545.00	RACOR	2
026	57.10317.00	FITTING	1
030	24.10801.00		1
032	24.10803.00		1
033	24.10804.00		1
034	24.10805.00		1
036	24.10807.00		1
037	24.10808.00		1
038	24.10809.00		1
039	24.10810.00		1
040	24.10811.00		1
041	24.10812.00		1
051	46.10911.00	FITTING	1
072	46.10410.00	FITTING	2
091	70.10239.00	FITTING M/M M16X1,5 - 1/4GAS	1
092	24.10841.00		1
101	46.10279.00		1
102	24.10867.00		1
103	24.10868.00		1
104	48.10312.00	RACOR C45M/TL -M26X1,5	1
105	57.10316.00	FITTING M/M M14X1.5-M12X1.5	1
106	24.10881.00	FITTING	1
107	70.10210.00	FITTING M/M M26xM22	1
108	32.10804.00	"RACOR MB/M "	1
110	57.10317.00	FITTING	1
116	48.10382.00	FITTING	1
117	70.10253.00	FITTING	1
118	23.10802.00	TUBE	1
119	23.10813.00	TUBE	1
121	48.10433.00	FITTING	1
122	57.10343.00	FITTING	1
131	48.10312.00	RACOR C45M/TL -M26X1,5	1
132	48.10433.00	FITTING	1
133	48.10223.00	FITTING	1

10. HYDRAULIC INSTALLATION TRANSMISSION DIAGRAM

FIGURE	REFERENCE	DENOMINATION	AMOUNT
134	70.10212.00	CLAMP SAE6000 3/4	4
135	46.10845.00	CLAMP SAE6000 1	4
136	24.10806.01	TUBE	1
137	48.10242.00	FITTING C90M/M -M14 / M12	1
138	46.10220.00	FITTING M16x2-TLM14	1

10. HYDRAULIC INSTALLATION SERVICE DIAGRAM

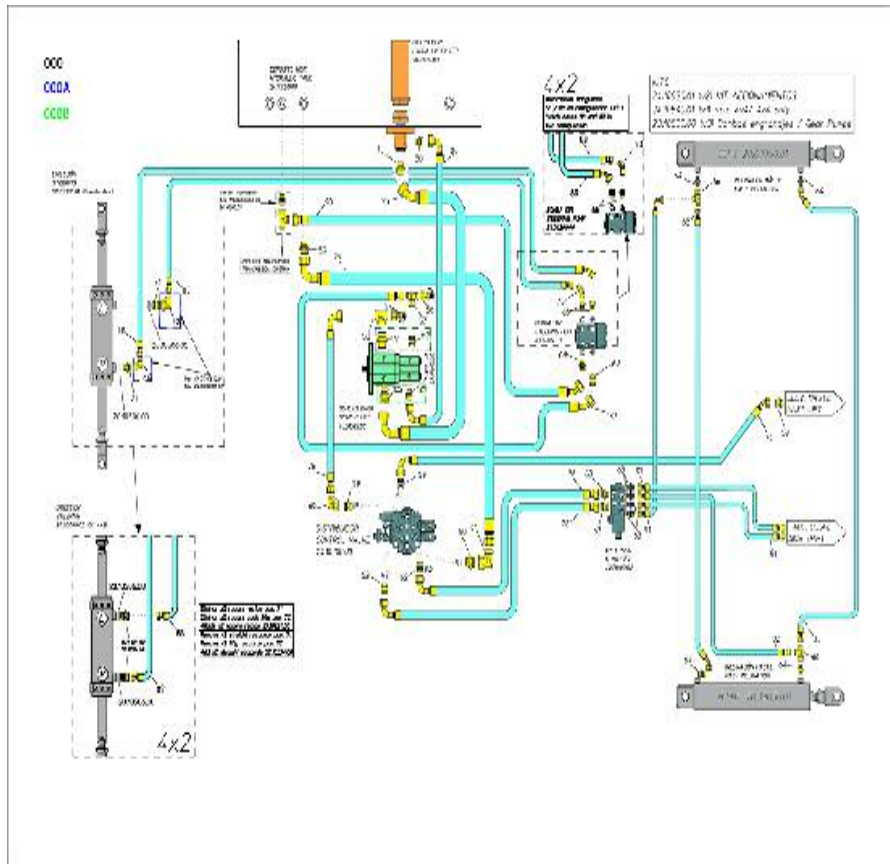


FIGURE	REFERENCE	DENOMINATION	AMOUNT
0	24.10820.01	TUBE KIT	1
000A	24.10840.01	PIPES KIT	1
000B	23.10800.00	PIPES KIT	1
001	12.10301.00	FITTING	1
050	57.10307.00	FITTING	3
053	48.10383.00		1
054	24.10893.00		1
057	46.10881.00	FITTING	1
058	64.10226.00	FITTING	1
059	48.10433.00	FITTING	2
060	46.10839.00	FITTING	1
061	46.58004.00	FITTING	1
062	20.10260.00	NIPPLE M/M	2
063	46.58184.00	RACOR M / M 3/8BSP-M14X1.5	6
064	20.10242.00	NIPPLE M/M	4
066	48.10320.00	RACOR FORT M/M/TL -M14X1,5	2
068	46.10825.00	FITTING	2
069	48.10235.00	RACOR M/M -1/2"BSP / M22X1,5	2

10. HYDRAULIC INSTALLATION SERVICE DIAGRAM

FIGURE	REFERENCE	DENOMINATION	AMOUNT
070	48.10139.00	FITTING	1
071	48.10943.00	RACOR	2
072	46.10410.00	FITTING	2
116	48.10382.00	FITTING	1
117	70.10253.00	FITTING	1
121	48.10433.00	FITTING	1
122	57.10343.00	FITTING	1

10. HYDRAULIC INSTALLATION VALVES

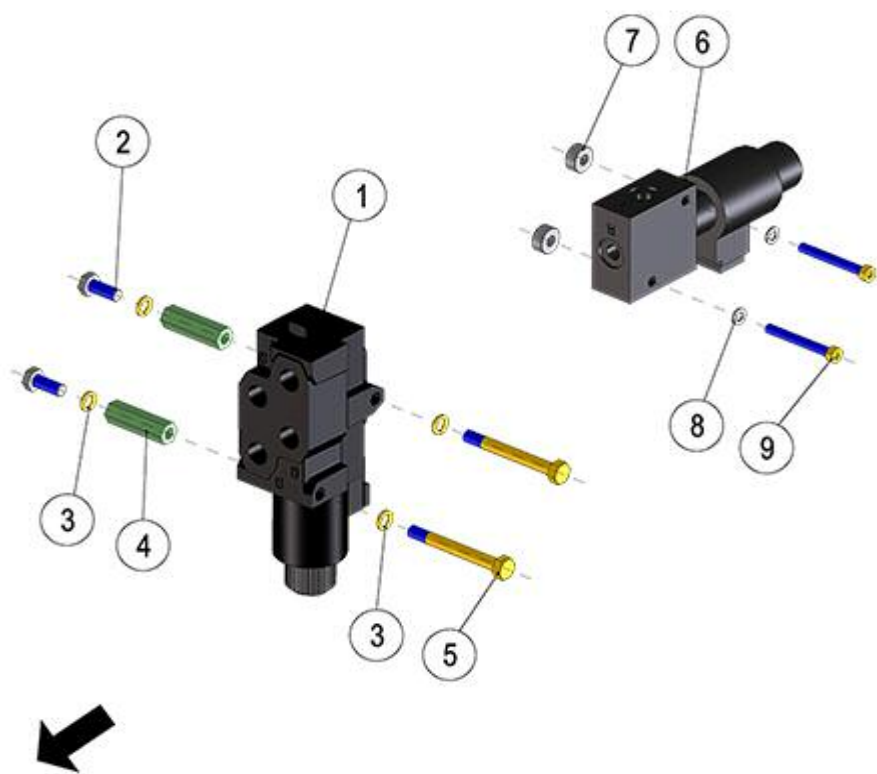


FIGURE	REFERENCE	DENOMINATION	AMOUNT
001	42.70100.02		1
002	603.08020.86	SCREW DIN933 M8x20	2
003	104.08000.00	WASHER DIN7980 D8	4
004	20.10203.00	SPACER	2
005	604.08070.86	SCREW DIN931	2
006	46.15005.00	3 WAY SELECTOR VALVE DEUTSCH	2
007	20.10010.01	PIN SUPPORT 8X17	2
008	105.06000.66	CIR-CLIP DIN7980	2
009	601.06050.86	SCREW	2

11. ELECTRIC INSTALLATION FLASHING BEACON

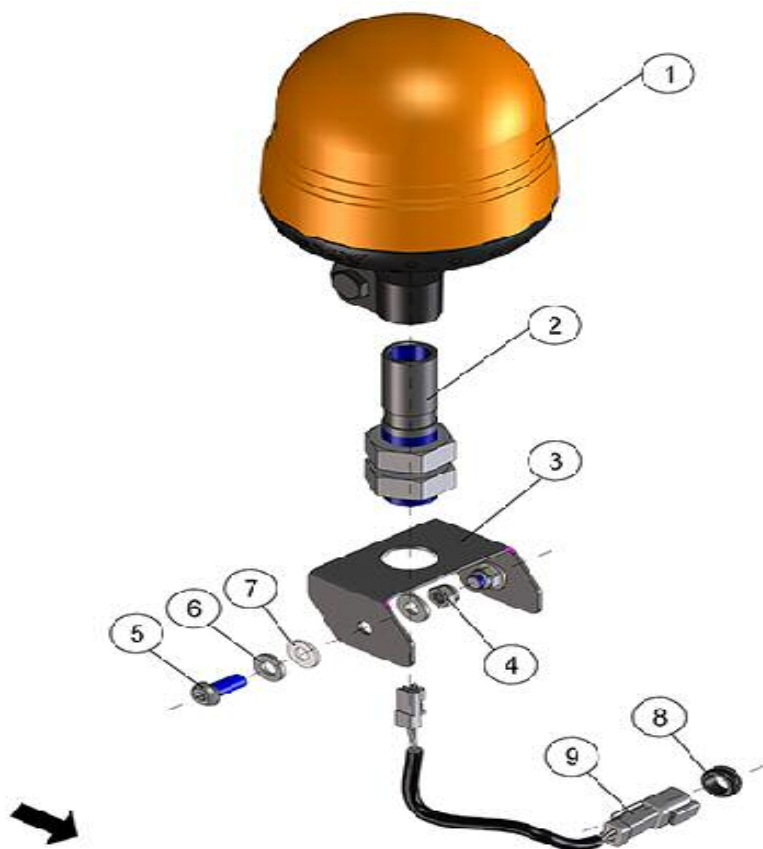


FIGURE	REFERENCE	DENOMINATION	AMOUNT
001	01.00912.01	FLASHING BEACON	1
002	24.11200.00	SUPPORT	1
003	24.11205.00	SUPPORT	1
004	711.08000.66	NUT DIN982 M8	2
005	630.08020.96	SCREW ISO7380	2
006	101.08000.66	WASHER DIN125 D8	4
007	116.08000.00	WASHER DIN125 A D8	2
008	16.01155.00	GROMMET D11XD15XD19X4X8	1
009	46.11154.00	ROTATIVE BEACON ELECTRICAL LENGHT	1

11. ELECTRIC INSTALLATION BATTERY

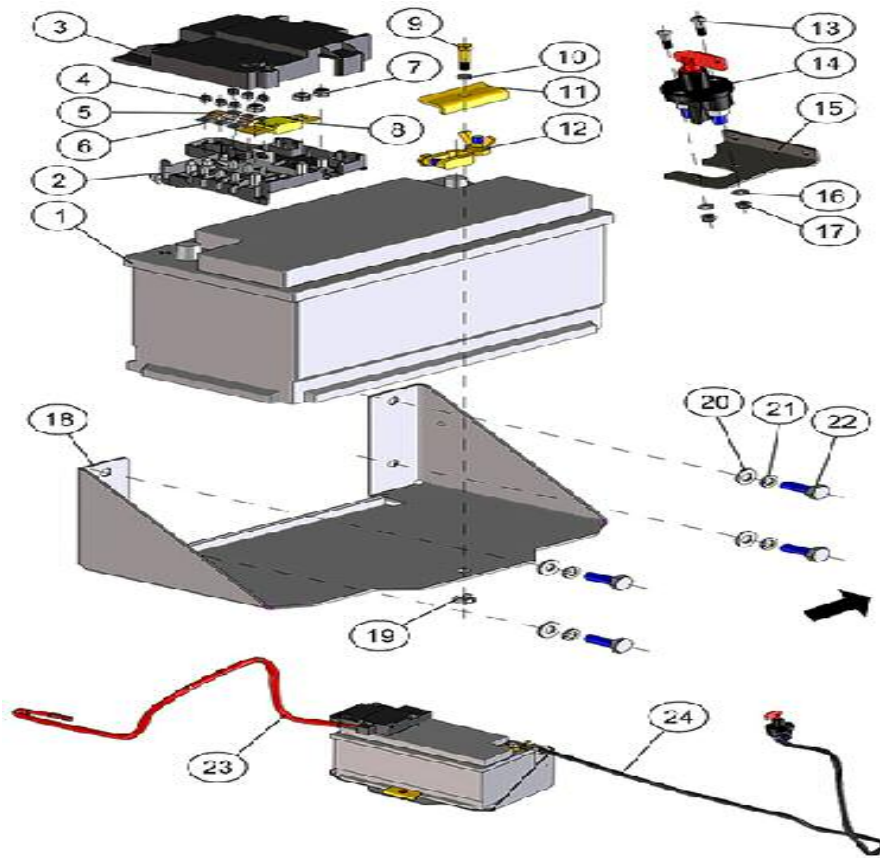


FIGURE	REFERENCE	DENOMINATION	AMOUNT
001	64.11110.01	BATTERY 92AH 760A	1
002	20.11009.00	BATTERY FUSE BOX	1
003	20.11014.00	BATTERY FUSEBOX COVER	1
004	711.05000.66	NUT DIN982 M5	1
005	13.11109.00	30A FUSE	2
006	20.11011.03	FUSE 80A	1
007	711.08000.66	NUT DIN982 M8	3
008	20.11010.00	200A PROTECTION FUSE	1
009	604.06030.86	SCREW DIN931	1
010	104.06000.00	WASHER DIN7980 D6	1
011	20.11101.00	FIXATION SUPPORT 2X10X70	1
012	20.11007.01	NEGATIVE BATTERY CONNECTOR	1
013	630.06025.96	SCREW ISO7380 M6x25	2
014	24.11153.00	BATTERY DISCONNECTOR	1
015	24.11210.00	FIXING SUPPORT	1
016	101.06000.66	WASHER DIN125 D6	2
017	720.06000.66	NUT	2
018	24.11206.00	SUPPORT	1

11. ELECTRIC INSTALLATION BATTERY

FIGURE	REFERENCE	DENOMINATION	AMOUNT
019	726.06003.66	CAGED NUT M6x3	1
020	101.10000.66	WASHER DIN125 D10	4
021	104.10000.00	WASHER DIN7980 D10	4
022	603.10030.86	SCREW DIN933	4
023	35.11106.00	POSITIVE ELECTRIC CABLE D35X1200MM	1
024	24.11304.00	NEGATIVE WIRE	1

11. ELECTRIC INSTALLATION

WIRING HARNESS (PART 1)

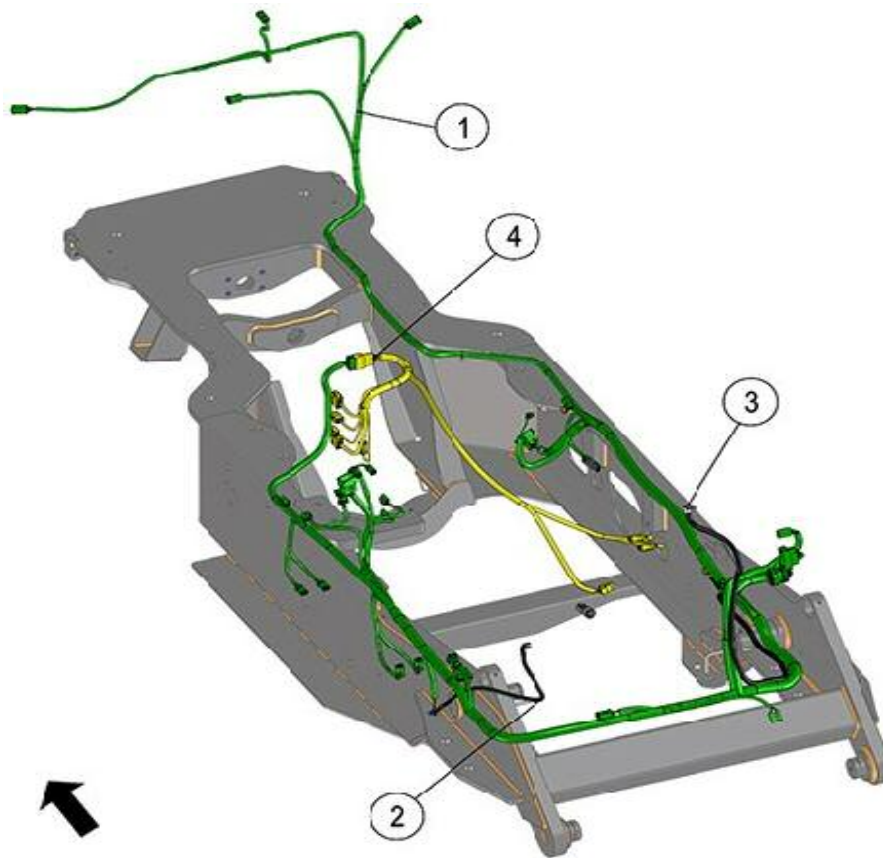


FIGURE	REFERENCE	DENOMINATION	AMOUNT
001	24.11000.01		1
002	24.11302.00	WIRE	1
003	24.11303.00	NEGATIVE WIRE	1
004	23.11001.00	WIRING HARNESS	1

11. ELECTRIC INSTALLATION WIRING HARNESS (PART 2)

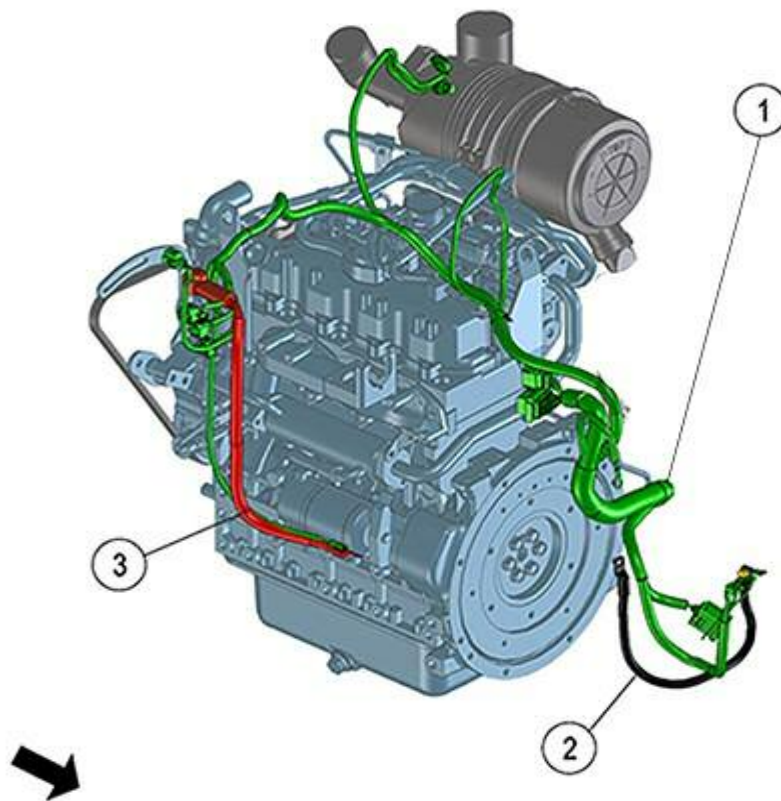


FIGURE	REFERENCE	DENOMINATION	AMOUNT
001	23.11000.00	ENGINE WIRING HARNESS	1
002	48.11141.00	POWER CORD 35X450MM M8-M10	1
003	24.11301.00	ELECTRICAL CABLE 25X480MM M8-M6	1

11. ELECTRIC INSTALLATION

WIRING HARNESS (PART 3)

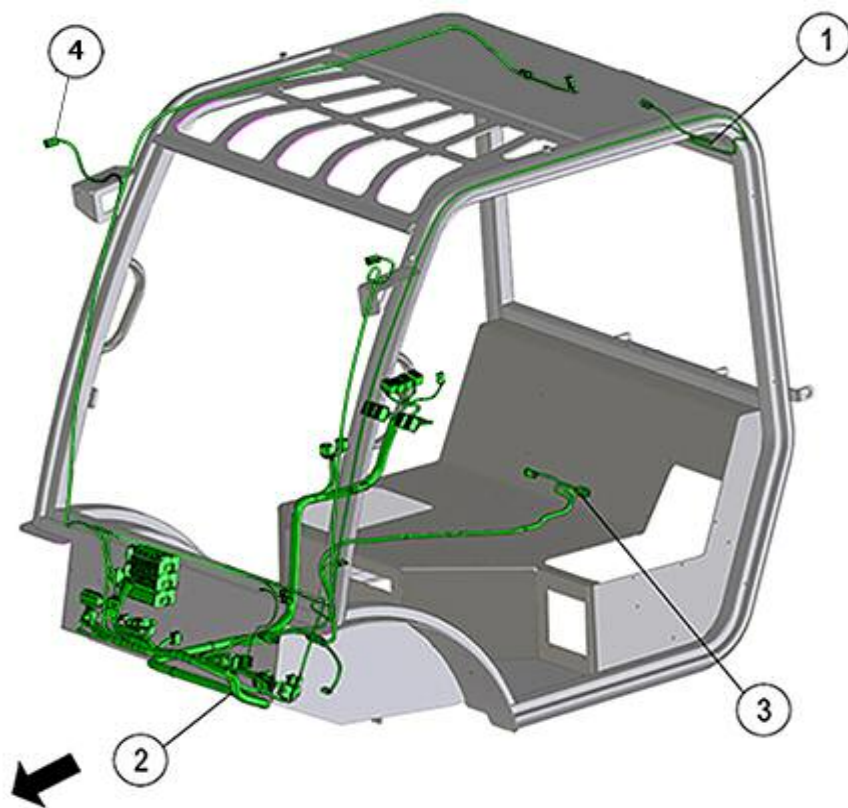


FIGURE	REFERENCE	DENOMINATION	AMOUNT
001	66.11011.00	EXTENSION WIRE 3150 2V 2V	1
002	24.11002.03	CABIN WIRING HARNESS	1
003	24.11010.01	EXTENSION WIRING HARNESS	1
004	24.11005.00		1

11. ELECTRIC INSTALLATION BUZZERS

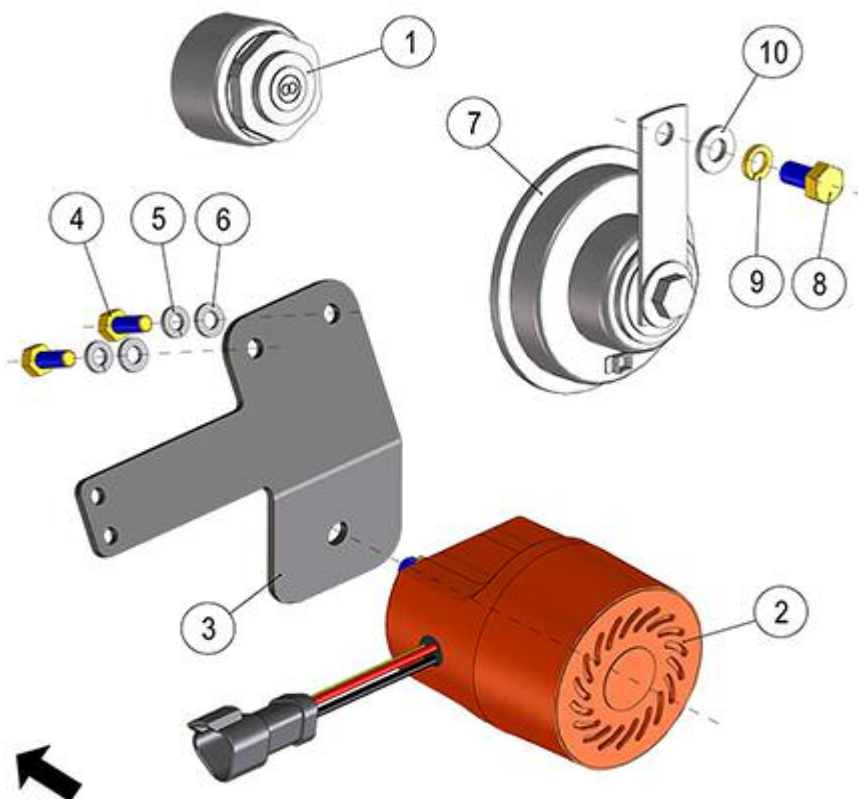


FIGURE	REFERENCE	DENOMINATION	AMOUNT
001	12.11033.01	CONTACT ACOUSTIC SIGNAL	1
002	02.14110.04	REVERSE BUZZER	1
003	24.11209.00	FIXING SUPPORT	1
004	603.06015.86	SCREW DIN933 M6x15	2
005	104.06000.00	WASHER DIN7980 D6	2
006	101.06000.66	WASHER DIN125 D6	2
007	70.11309.00	HORN	1
008	603.08015.86	SCREW DIN933 M8x15	1
009	104.08000.00	WASHER DIN7980 D8	1
010	101.08000.66	WASHER DIN125 D8	1

11. ELECTRIC INSTALLATION SWITCHES

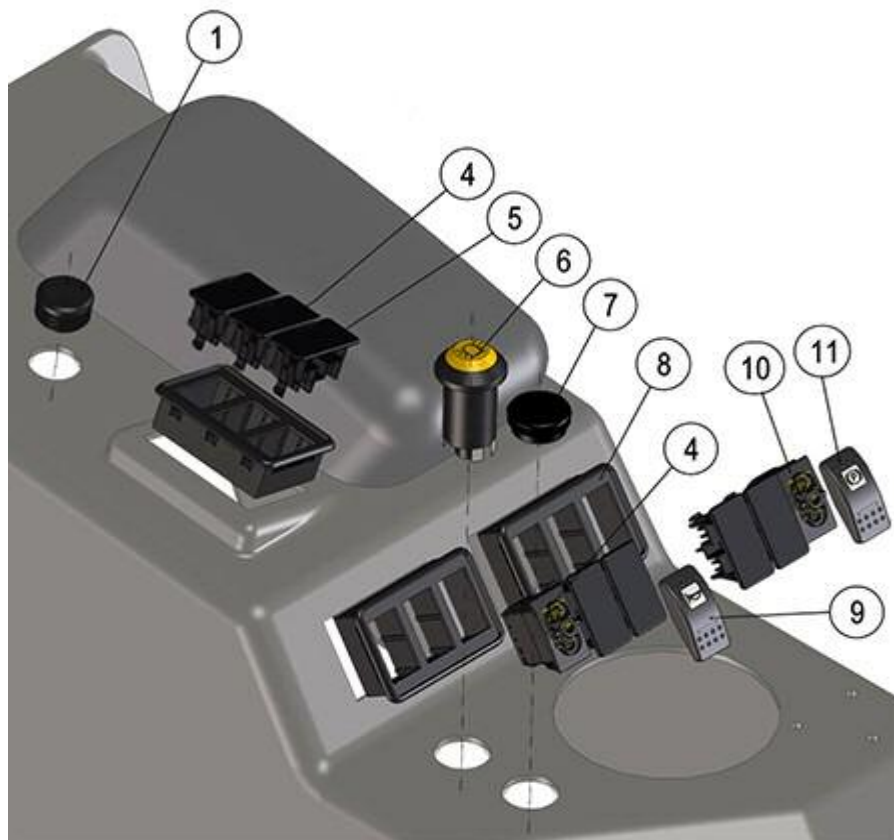


FIGURE	REFERENCE	DENOMINATION	AMOUNT
001	24.11157.00	SWITCH	1
002	24.11110.00	COVER DPF	1
003	48.11551.00	PUSH OFF-(ON) 1P	2
004	02.32030.00	CAP D30 PLASTIC	1
005	IM.20013.00	SWITCH	1
006	48.11559.00	SWITCH 1P ON-ON	1
007	24.11112.00	BRAKE COVER	1
008	24.11113.00	HORN COVER	1
009	24.11130.00	CAP	5
010	13.08032.00	CAP D 32	1
011	24.11131.00	SWITCH SUPPORT	1

11. ELECTRIC INSTALLATION

ELECTRIC CONTROL SYSTEM

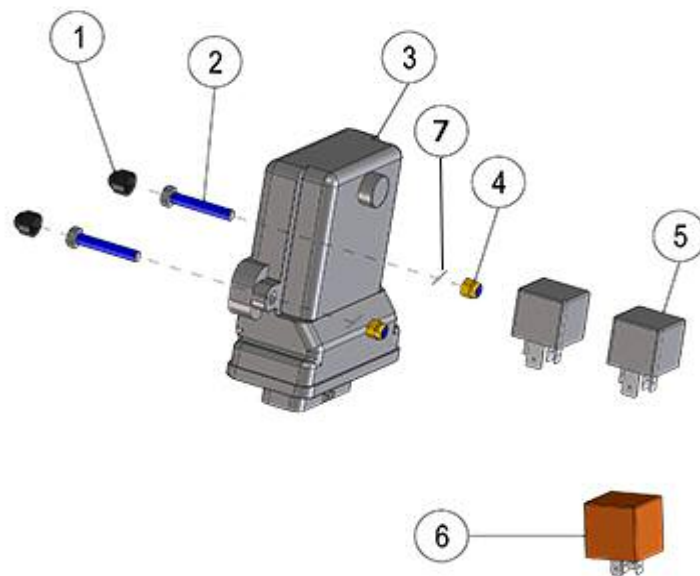


FIGURE	REFERENCE	DENOMINATION	AMOUNT
001	46.08774.00	CAP GPN M6	2
002	603.06035.86	SCREW DIN933 M6x35	2
003	66.11107RE00	ECU MACHINE FUNC. + SOFTWARE	1
004	711.06000.66	NUT DIN982 M6	2
005	48.11170.01	RELAY 70A UNSUPPORTED WITH DIODE	2
006	43.01530.04	RELAY 40A WITH DIODE	1
007	101.06000.66	WASHER DIN125 D6	2

12. FINISHES

STICKERS & PLATES (PART 1)

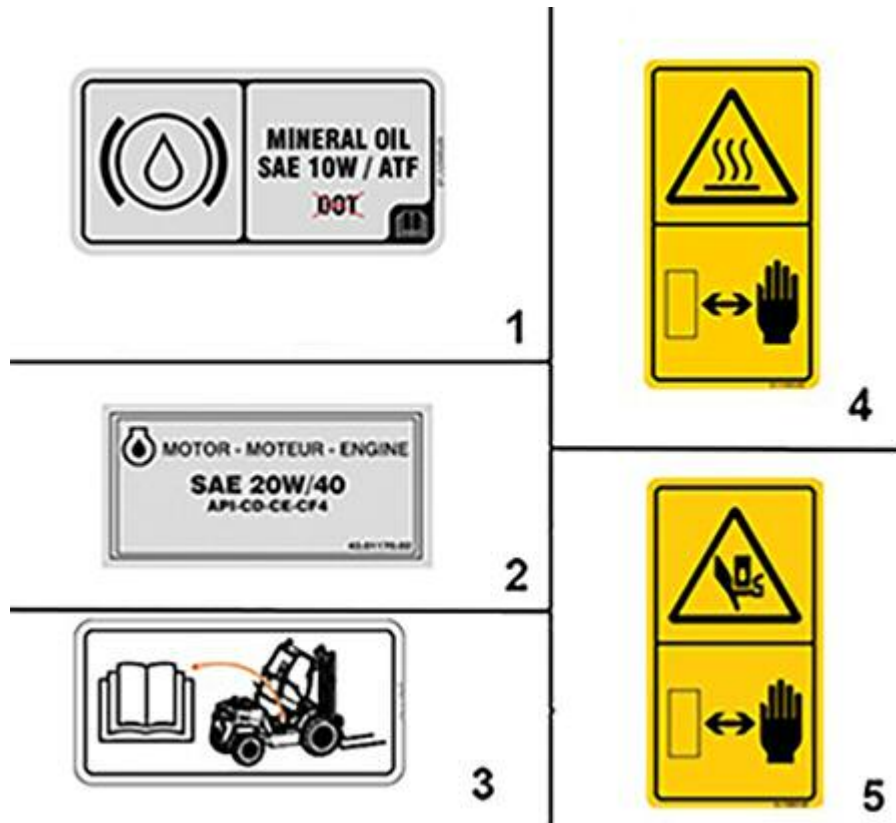


FIGURE	REFERENCE	DENOMINATION	AMOUNT
001	01.12500.00		1
002	43.01170.02	PLATE AD. INDI	1
003	24.12140.00	ADHESIVE PLATE	1
004	01.12002.00		1
005	24.12802.00		2

12. FINISHES

STICKERS & PLATES (PART 2)

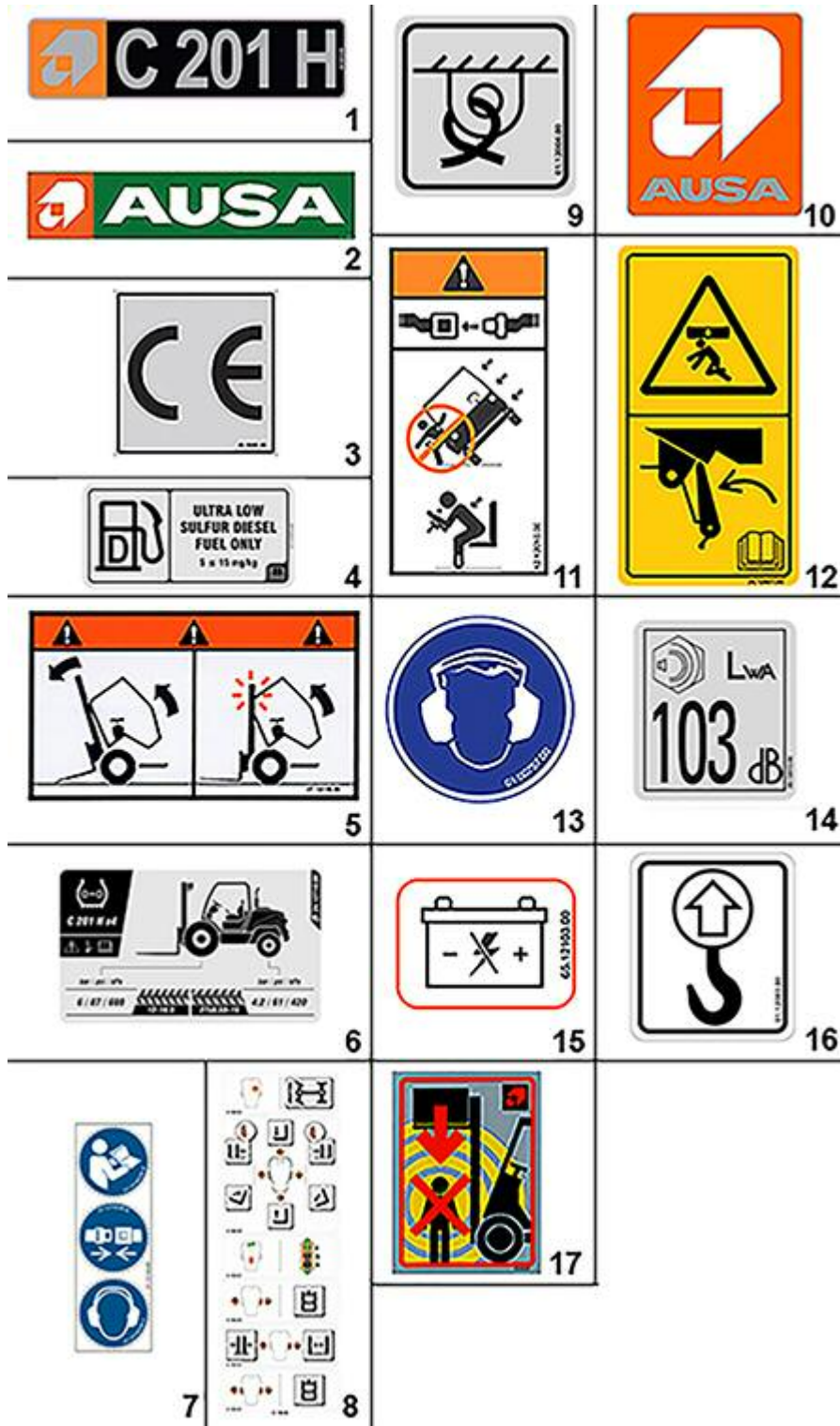


FIGURE	REFERENCE	DENOMINATION	AMOUNT
001	24.12010.00	MODEL STICKER C 201 H	2
001	24.12010.00	MODEL STICKER C 201 H	2
002	13.12136.00	ADHESIVE 450x92	2
003	45.19101.00	PLATE AD. INDI	1
004	01.12005.00		1

005	57.12010.00	PLATE AD. INDI	1
006	24.12710.00	PRESSURE STICKER	1
007	01.12140.00		1
008	24.12900.00		1
009	01.12004.00		4
010	46.08099.00	AUSA BADGE	1
011	12.12010.00	ADHESIVE	1
012	24.12801.00		1
013	01.00757.00	PLATE AD. INDI	1
014	09.12013.00	ADHESIVE	1
015	65.12103.00	STICKER DISCONNECT	1
016	01.12003.00		3
017	45.01352.00	PLATE AD. INDI	2

13. ACCESSORIES HALF-CLOSED CABIN

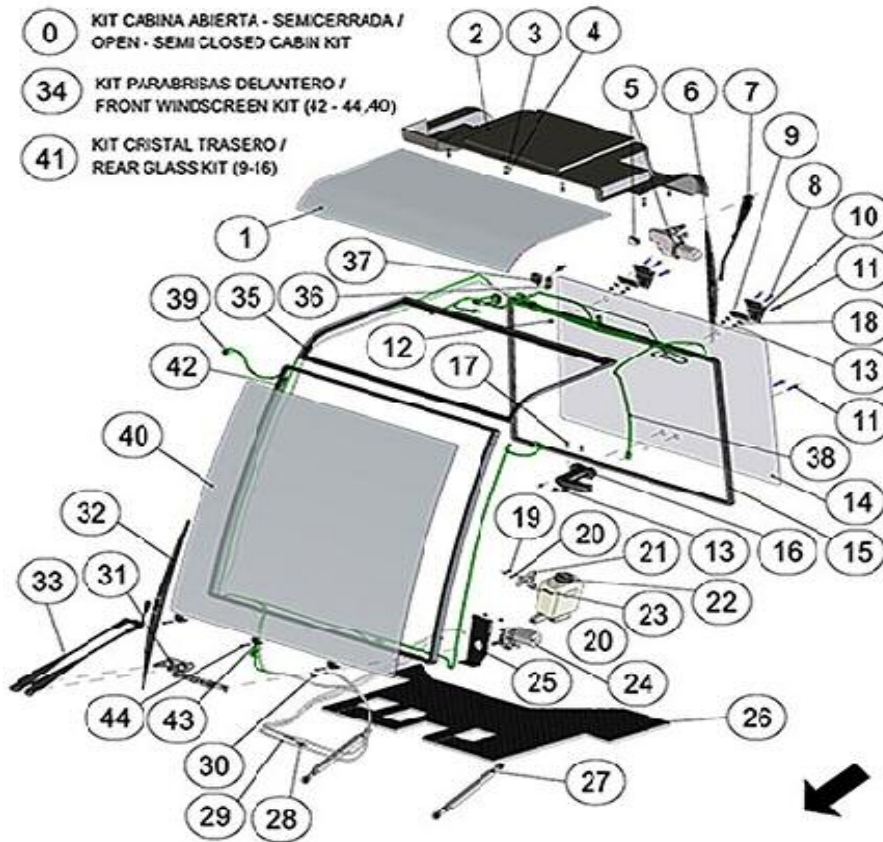


FIGURE	REFERENCE	DENOMINATION	AMOUNT
0	24.08201RE00	SEMI-CLOSED CABIN SET	1
001	24.08237.00	CABIN ROOF GLASS	1
001	24.08237.00	CABIN ROOF GLASS	1
002	24.08207.00	COVER	1
002	24.08207.00	COVER	1
003	101.06000.66	WASHER DIN125 D6	9
003	101.06000.66	WASHER DIN125 D6	9
004	630.06015.96	SCREW ISO7380 M6x15	9
004	630.06015.96	SCREW ISO7380 M6x15	9
005	24.08229.00		1
005	24.08229.00		1
006	24.08248.00		1
006	24.08248.00		1
007	24.08247.00		1
007	24.08247.00		1
008	24.08282.00	SHIM 4.00MM	2
008	24.08282.00	SHIM 4.00MM	2
009	618.08030.87	SCREW DIN7991 M8X30	4

13. ACCESSORIES
HALF-CLOSED CABIN

FIGURE	REFERENCE	DENOMINATION	AMOUNT
009	618.08030.87	SCREW DIN7991 M8X30	4
010	24.08235.00	REAR WINDOW HINGE	2
010	24.08235.00	REAR WINDOW HINGE	2
011	618.08040.86	SCREW DIN7991 M8x40/1,25	4
011	618.08040.86	SCREW DIN7991 M8x40/1,25	4
012	101.08000.66	WASHER DIN125 D8	4
012	101.08000.66	WASHER DIN125 D8	4
013	711.08000.66	NUT DIN982 M8	6
013	711.08000.66	NUT DIN982 M8	6
014	24.08233.00	REAR GLASS	1
014	24.08233.00	REAR GLASS	1
015	24.08231.00	GLASS RUBBER PROFILE	1
015	24.08231.00	GLASS RUBBER PROFILE	1
016	24.08240.00	LOCK	1
016	24.08240.00	LOCK	1
017	601.06020.86	SCREW DIN912	2
017	601.06020.86	SCREW DIN912	2
018	24.08270.00	NUT	2
018	24.08270.00	NUT	2
019	711.06000.66	NUT DIN982 M6	2
019	711.06000.66	NUT DIN982 M6	2
020	101.06000.66	WASHER DIN125 D6	4
020	101.06000.66	WASHER DIN125 D6	4
021	24.13157.00		1
021	24.13157.00		1
022	24.13159.00	WINDSCREEN WIPER TANK	1
022	24.13159.00	WINDSCREEN WIPER TANK	1
023	618.06020.86	SCREW DIN7991	2
023	618.06020.86	SCREW DIN7991	2
024	24.08228.00		1
024	24.08228.00		1
025	24.13158.00	WINDSCREEN WIPER ENGINE SUPPORT	1
025	24.13158.00	WINDSCREEN WIPER ENGINE SUPPORT	1
026	24.13162.00		1
026	24.13162.00		1
027	24.08006.00	GAS SHOCK ABSORBER 2300N	2

13. ACCESSORIES
HALF-CLOSED CABIN

FIGURE	REFERENCE	DENOMINATION	AMOUNT
027	24.08006.00	GAS SHOCK ABSORBER 2300N	2
028	46.02300.00	CHECK VALVE D5X45	2
028	46.02300.00	CHECK VALVE D5X45	2
029	469.04008.00	TRANSPARENT PLASTIC TUBE MATERIAL	1
029	469.04008.00	TRANSPARENT PLASTIC TUBE MATERIAL	1
030	13.08204.01	GROMMET	2
030	13.08204.01	GROMMET	2
031	24.08284.00		1
031	24.08284.00		1
032	24.08225.00		1
032	24.08225.00		1
033	24.08226.00		1
033	24.08226.00		1
034	24.08230RE01	WINDSCREEN KIT	1
034	24.08230RE01	WINDSCREEN KIT	1
035	24.08224.00	UPPER GLASS RUBBER PROFILE SET	1
035	24.08224.00	UPPER GLASS RUBBER PROFILE SET	1
036	24.11118.00	REAR WINDSCREEN WIPER COVER	1
036	24.11118.00	REAR WINDSCREEN WIPER COVER	1
037	24.11120.00	COMMUTATOR OFF-ON-ON	1
037	24.11120.00	COMMUTATOR OFF-ON-ON	1
038	24.11009.00		1
038	24.11009.00		1
039	24.11005.00		1
039	24.11005.00		1
040	24.08230.01	FRONT WINDSCREEN GLASS	1
040	24.08230.01	FRONT WINDSCREEN GLASS	1
041	24.08223.00	REAR GLASS KIT	1
041	24.08223.00	REAR GLASS KIT	1
042	24.08231.00	GLASS RUBBER PROFILE	1
042	24.08231.00	GLASS RUBBER PROFILE	1
043	24.08232.00	BLOCK	3
043	24.08232.00	BLOCK	3
044	24.08249.01	SCREW	3
044	24.08249.01	SCREW	3

13. ACCESSORIES CLOSED CABIN (1)

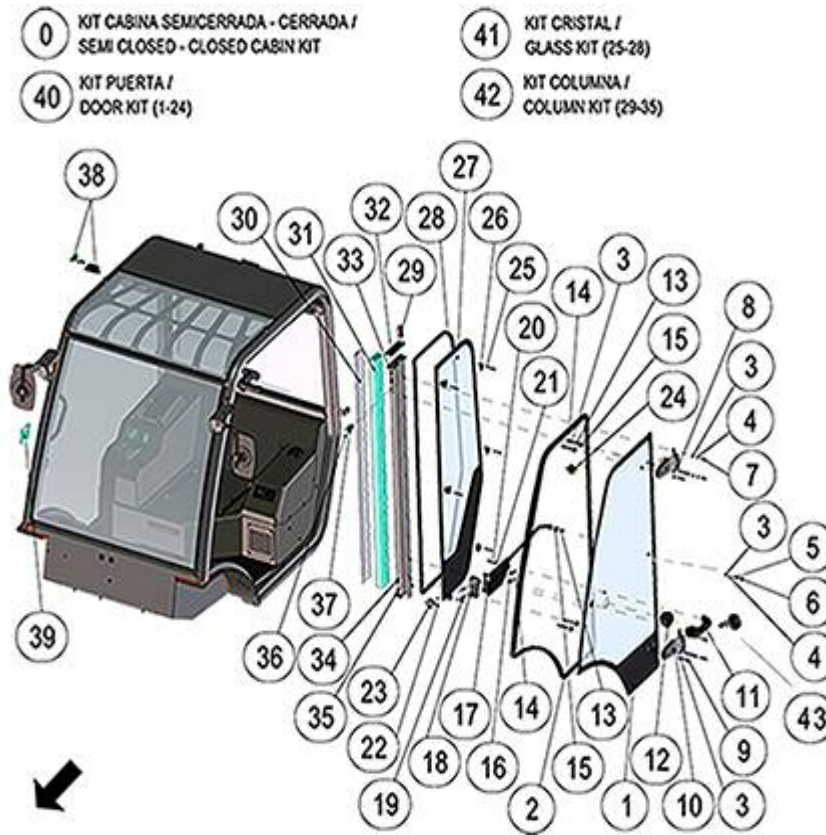


FIGURE	REFERENCE	DENOMINATION	AMOUNT
0	24.08202RE00	CLOSED CABIN SET	1
001	24.08250.00	LEFT DOOR GLASS	1
001	24.08250.00	LEFT DOOR GLASS	1
002	24.08231.00	GLASS RUBBER PROFILE	1
003	101.08000.66	WASHER DIN125 D8	13
004	104.08000.00	WASHER DIN7980 D8	5
005	603.08030.86	SCREW DIN933 M8X30	1
006	24.08279.00	CAP	1
006	24.08279.00	CAP	1
007	603.08020.86	SCREW DIN933 M8x20	4
008	24.08283.00	DOOR HINGE	1
008	24.08283.00	DOOR HINGE	1
009	603.08035.86	SCREW DIN933	4
010	24.08262.00	DOOR HINGE	1
010	24.08262.00	DOOR HINGE	1
011	24.08267.00	HANDLE	1
011	24.08267.00	HANDLE	1
012	24.08280.00	LOCK	1

13. ACCESSORIES

CLOSED CABIN (1)

FIGURE	REFERENCE	DENOMINATION	AMOUNT
012	24.08280.00	LOCK	1
013	24.08278.00	BUSH	5
013	24.08278.00	BUSH	5
014	711.08000.66	NUT DIN982 M8	6
015	24.08276.00	GROMMET	5
015	24.08276.00	GROMMET	5
016	112.08000.66	WASHER DIN9021 D8	2
017	24.08264.00	INTERIOR HANDLE	1
017	24.08264.00	INTERIOR HANDLE	1
018	24.08281.00	LEFT DOOR LOCK	1
019	618.08040.86	SCREW DIN7991 M8x40/1,25	2
020	603.06025.86	SCREW DIN933 M6x25	1
021	112.06000.66	WASHER DIN9021 D6	1
022	630.06010.96	SCREW ISO7380 M6X10	2
023	24.08266.00	BLOCK	1
024	24.08260.00	BLOCK	1
025	24.08249.01	SCREW	6
025	24.08249.01	SCREW	6
026	24.08232.00	BLOCK	6
026	24.08232.00	BLOCK	6
027	24.08252.00	LEFT GLASS	1
027	24.08252.00	LEFT GLASS	1
028	24.08231.00	GLASS RUBBER PROFILE	1
029	24.08272.00	CAP	1
029	24.08272.00	CAP	1
030	24.08273.00	TRIM	1
030	24.08273.00	TRIM	1
031	24.08271.00	LINING	1
031	24.08271.00	LINING	1
032	24.08277.00	GASKET	1
032	24.08277.00	GASKET	1
033	24.08245.00	LEFT CENTRAL RUNG	1
033	24.08245.00	LEFT CENTRAL RUNG	1
034	630.08025.96	SCREW ISO7380	4
035	101.08000.66	WASHER DIN125 D8	4
036	615.04015.66	SCREW DIN84 M4x15	2

13. ACCESSORIES

CLOSED CABIN (1)

FIGURE	REFERENCE	DENOMINATION	AMOUNT
037	36.11111.00		1
037	36.11111.00		1
038	24.11145.00	COURTESY LIGHT	1
038	24.11145.00	COURTESY LIGHT	1
039	01.12001.00	EMERGENCY EXIT STICKER	1
039	01.12001.00	EMERGENCY EXIT STICKER	1
040A	24.08241.00	LEFT DOOR KIT	1
040B	24.08242.00	RIGHT DOOR KIT	1
042	24.08274.00		1
042	24.08274.00		1
043	IM.30025.99	KEY	1

13. ACCESSORIES CLOSED CABIN (2)

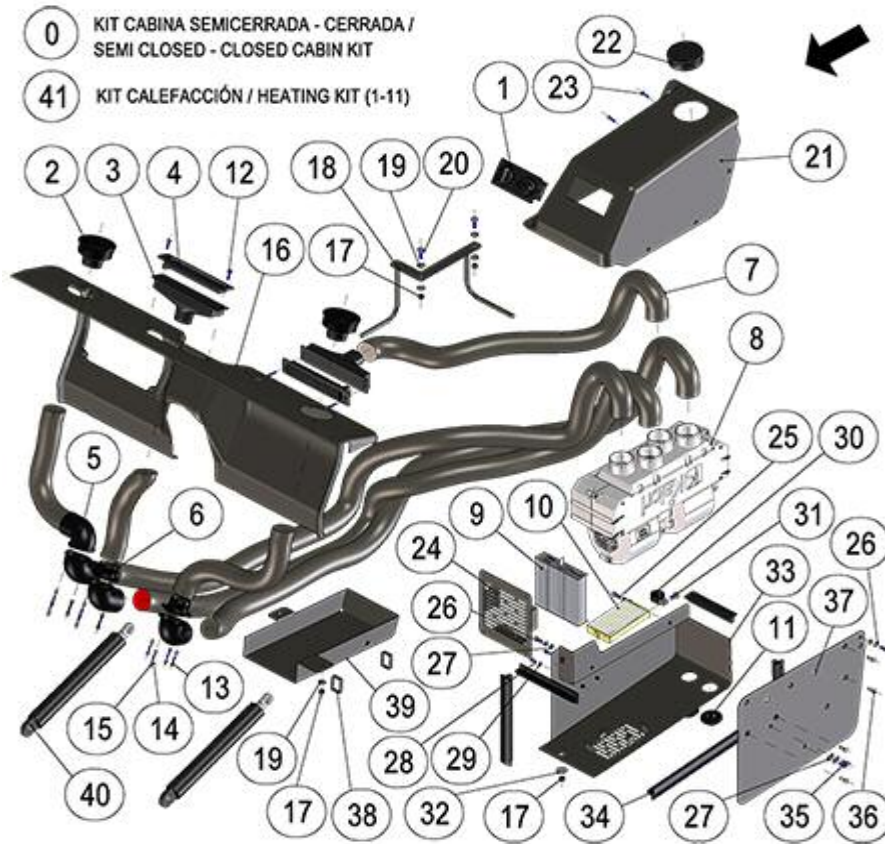


FIGURE	REFERENCE	DENOMINATION	AMOUNT
001	24.13152.00	SET CONTROL REGULATOR	1
002	24.13107.00	BUSH	2
003	24.13111.00	FITTING	2
004	24.13110.00	GRILLE	2
005	24.13108.00	FITTING	4
006	24.13109.00	FITTING	2
007	489.00045.00	FITTING	1
008	24.13151.00	HEATING	1
009	24.13105.00	AIR FILTER	1
010	24.13106.00	AIR FILTER	1
011	24.13119.00	GROMMET	2
012	635.04822.67	SCREW	4
013	601.04020.87	SCREW DIN912 M4x20	12
014	104.04000.00	WASHER DIN7980 D4	12
015	101.04000.66	WASHER DIN125 D4	12
016	24.13154.00		1
017	711.08000.66	NUT DIN982 M8	6
018	24.13123.00		1

13. ACCESSORIES CLOSED CABIN (2)

FIGURE	REFERENCE	DENOMINATION	AMOUNT
019	101.08000.66	WASHER DIN125 D8	6
020	603.08020.86	SCREW DIN933 M8x20	2
021	24.13155.00		1
022	02.32080.00	CAP	1
023	630.05015.96	SCREW ISO7380 M5x15	2
024	24.13143.00		1
025	603.06015.86	SCREW DIN933 M6x15	2
026	104.06000.00	WASHER DIN7980 D6	2
027	101.06000.66	WASHER DIN125 D6	2
028	603.05010.86	SCREW DIN933 M5x10	2
029	101.05000.66	WASHER DIN125 D5	2
030	830.01808.00	CLAMP LOOP	1
031	603.08015.86	SCREW DIN933 M8x15	1
032	112.08000.66	WASHER DIN9021 D8	1
033	24.13140.00		1
034	472.00411.00	RUBBER PROFILE MAT.	1
035	630.06015.96	SCREW ISO7380 M6x15	3
036	618.06015.86	SCREW DIN7991	4
037	24.13124.00		1
038	931.08300.00	BAND CLAMP 7.8X300	2
039	24.13121.00		1
040	30.08040.01	GAS SPRING 2800N	2
041	24.13150.01	HEATER KIT	1

13. ACCESSORIES CLOSED CABIN (3)

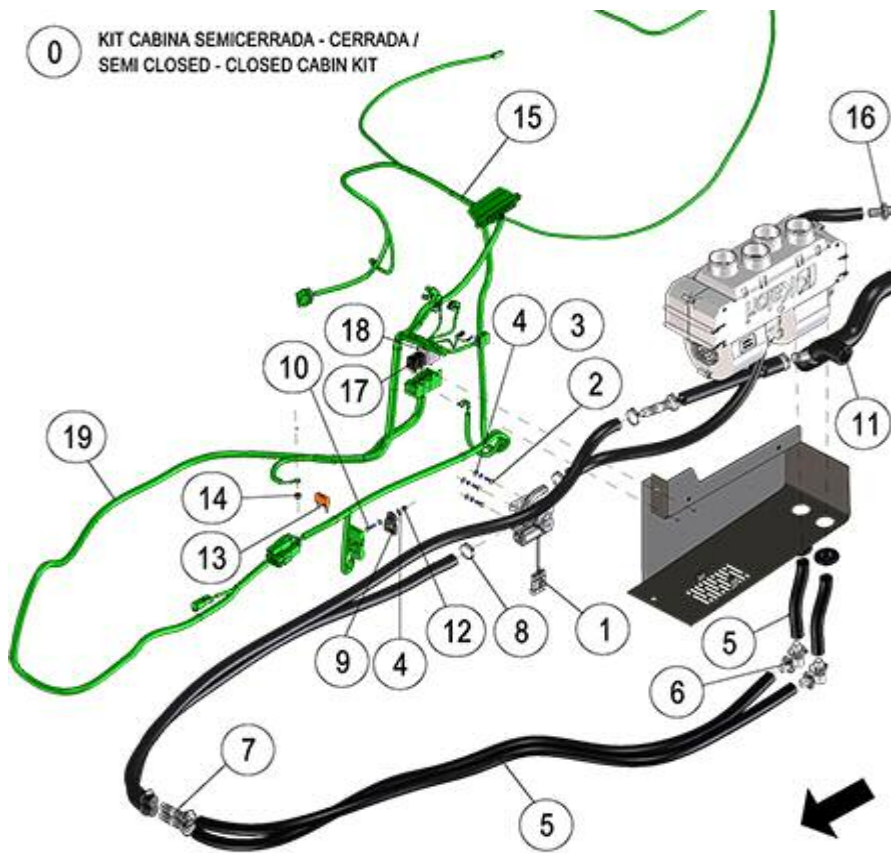


FIGURE	REFERENCE	DENOMINATION	AMOUNT
001	24.13113.00	CONTROLLER VALVE	1
002	603.05015.86	SCREW DIN933	3
003	104.05000.00	WASHER DIN7980 D5	3
004	101.05000.66	WASHER DIN125 D5	5
005	464.03024.00	TUBE	1
006	32.08265.00	RACORD C90M/M D16XD12 PLASTIC	2
007	32.08243.00	FITTING M/M RECTUM 16X12X76	3
008	912.20032.00	CLAMP	13
009	24.11132.00		1
010	603.05020.86	SCREW DIN933 M5x20	1
011	24.02517.00		1
012	711.05000.66	NUT DIN982 M5	1
013	32.11027.00	BIG SIZE FUSE 40A	1
014	711.08000.66	NUT DIN982 M8	1
015	24.11008.00		1
016	08.00301.02	NIPPLE M/TB	1
017	IM.20026.03	MICRO RELAY WITH DIODE	2
018	43.01530.02	RELAY 40 AMP. 5 CONTAC. 6.3MM	1

13. ACCESSORIES
CLOSED CABIN (3)

FIGURE	REFERENCE	DENOMINATION	AMOUNT
019	24.11007.00		1

13. ACCESSORIES

AIR CONDITIONING (1)

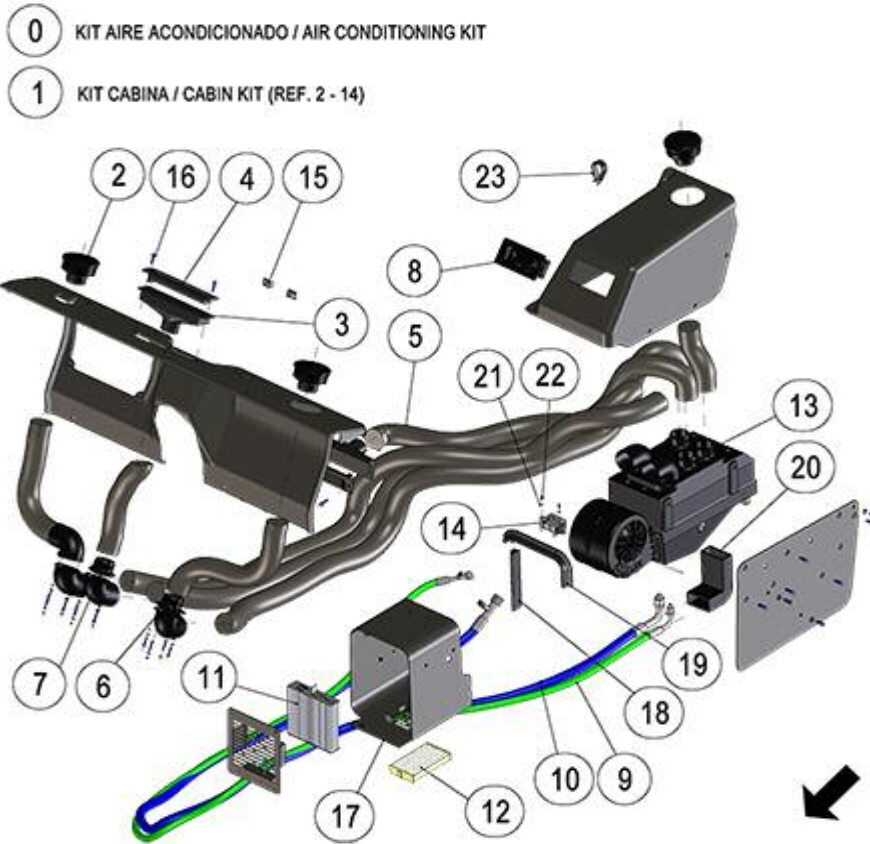


FIGURE	REFERENCE	DENOMINATION	AMOUNT
001	24.13100.00	AIR CONDITIONING KIT	1
002	24.13107.00	BUSH	3
003	24.13111.00	FITTING	2
004	24.13110.00	GRILLE	2
005	489.00045.00	FITTING	1
006	24.13108.00	FITTING	4
007	24.13109.00	FITTING	2
008	24.13114.00	VALVE	1
009	24.13023.00	HOSE	1
010	24.13024.00	HOSE	1
011	24.13105.00	AIR FILTER	1
012	24.13106.00	AIR FILTER	1
013	24.13101.00	KARTEL	1
014	24.13118.00	ELECTRONIC THERMOSTAT	1
015	727.06004.86	CAGED NUT M6x4	2
016	635.04822.67	SCREW	4
017	24.13141.00	EVAPORATOR BOX	1
018	472.00410.00	RUBBER PROFILE 22X22	1

13. ACCESSORIES

AIR CONDITIONING (1)

FIGURE	REFERENCE	DENOMINATION	AMOUNT
019	472.00411.00	RUBBER PROFILE MAT.	1
020	488.00050.00	ASPHALT CLOTH	1
021	101.03000.67	WASHER DIN125 D3	2
022	615.03008.66	SCREW	2
023	830.02508.00	CLAMP TIE D25x8	1

13. ACCESSORIES

AIR CONDITIONING (2)

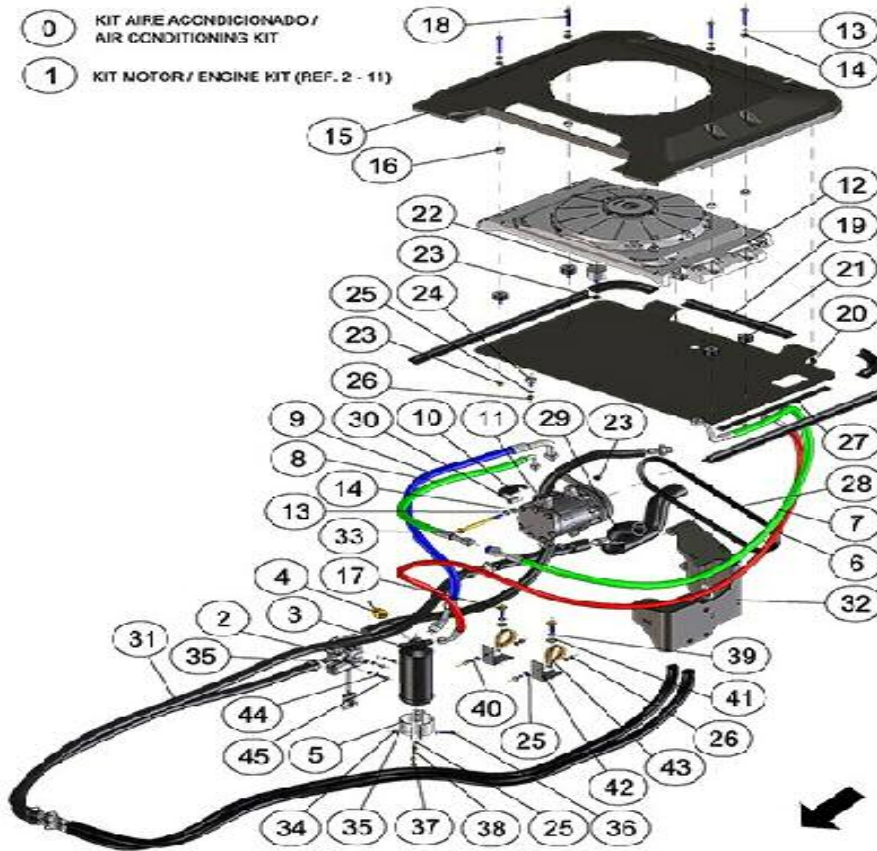


FIGURE	REFERENCE	DENOMINATION	AMOUNT
001	24.13020.00	AIR CONDITIONING PIPES KIT	1
002	24.13113.00	CONTROLLER VALVE	1
003	24.13102.00	FILTER DRIER	1
004	24.13103.00	AIR CONDITIONING SWITCH	1
005	24.13104.00	CLAMP	1
006	24.13022.00	HOSE	1
007	24.13021.00	HOSE	1
008	24.13026.00	HOSE	1
009	24.13025.00	HOSE	1
010	24.13125.00	CLAMP	1
011	24.13116.00	COMPRESSOR	1
012	24.13115.00	CONDENSER	1
013	104.08000.00	WASHER DIN7980 D8	5
014	101.08000.66	WASHER DIN125 D8	5
015	24.13160.00		1
016	48.03491.00	BUSH	4
017	620.10025.97	SCREW	2
018	603.08045.86	SCREW DIN933	4

13. ACCESSORIES

AIR CONDITIONING (2)

FIGURE	REFERENCE	DENOMINATION	AMOUNT
019	472.00411.00	RUBBER PROFILE MAT.	1
020	630.06020.96	SCREW ISO7380 M6x20	4
021	24.13149.00		4
022	08.00107.00	BUTT	2
023	711.08000.66	NUT DIN982 M8	6
024	60.01926.00	RUBBER TOP 20X8.5 M6X165	1
025	101.06000.66	WASHER DIN125 D6	7
026	711.06000.66	NUT DIN982 M6	1
027	472.04015.00	RUBBER PROFILE MAT.	1
028	24.13161.00		1
029	24.02517.00		1
030	802.00003.00		1
031	464.03024.00	TUBE	1
032	24.13146.00	COMPRESSOR SUPPORT	1
033	604.08120.86	SCREW	1
034	711.05000.66	NUT DIN982 M5	1
035	101.05000.66	WASHER DIN125 D5	5
036	603.05025.87	SCREW	1
037	603.06015.86	SCREW DIN933 M6x15	2
038	104.06000.00	WASHER DIN7980 D6	2
039	104.10000.00	WASHER DIN7980 D10	2
040	603.06020.86	SCREW DIN933 M6x20	2
041	101.10000.66	WASHER DIN125 D10	2
042	55.10127.00	PROFILE 60x60x30	2
043	830.04006.00	CLAMP LOOP D40x6	2
044	104.05000.00	WASHER DIN7980 D5	3
045	603.05015.86	SCREW DIN933	3

13. ACCESSORIES LIGHTS



FIGURE	REFERENCE	DENOMINATION	AMOUNT
001	24.11142.00	RIGHT FRONT MULTIFUNCTION LIGHT	1
002	24.11141.00	LEFT FRONT MULTIFUNCTION LIGHT	1
003	16.01155.00	GROMMET D11XD15XD19X4X8	4
004	603.06015.86	SCREW DIN933 M6x15	2
005	824.15000.00	CLAMP LOOP	2
006	711.06000.66	NUT DIN982 M6	2
007	24.11005.00		1
008	66.11125.00	MULTIFUNCTION LED LIGHT REAR	2
009	24.11143.00	REVERSING LIGHT	1
010	24.11114.00		1
011	24.11130.00	CAP	1
012	66.11135.00	SWITCH WARNING LED	1
013	24.11101.00		1
014	24.11001.00		1
015	24.11144.00		1
016	66.11104.00	DISPLAY PROGRAMMABLE LCD 4" COL	1
017	32.08172.00	MAIN SWITCH WITH KEY ASSEMBLY	1
018	48.11590.01	NC CONTACTOR FOR EMERGENCY STOP	1

13. ACCESSORIES

LIGHTS

FIGURE	REFERENCE	DENOMINATION	AMOUNT
019	48.11590.00	SWITCH EMERGENCY 1 CONTONTACTOR NC	1
020	IM.20026.03	MICRO RELAY WITH DIODE	2
021	66.11130.00	RESISTOR SMART LIGHT LED	4

13. ACCESSORIES WORK LIGHTS

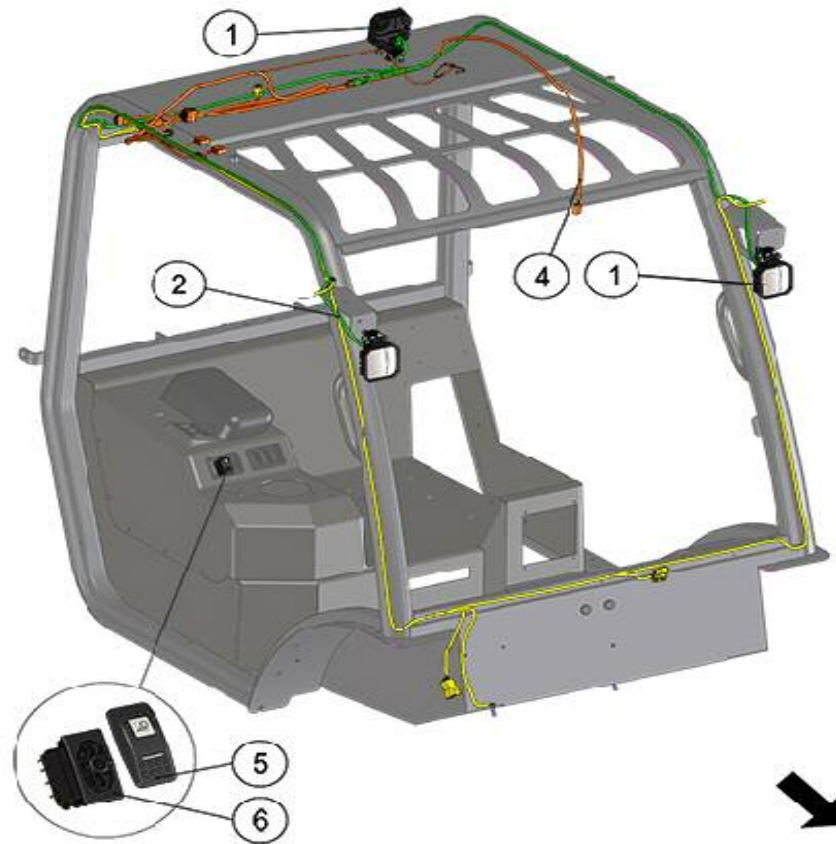


FIGURE	REFERENCE	DENOMINATION	AMOUNT
001	24.11143.00	REVERSING LIGHT	3
002	24.11012.00		1
004	24.11009.00		1
005	24.11116.00		1
006	48.11563.00	SWITCH ON-ON 2P	1

13. ACCESSORIES SEAT (OPTIONAL)



FIGURE	REFERENCE	DENOMINATION	AMOUNT
001	24.08004.00		1

13. ACCESSORIES

CYCLONIC FILTER



FIGURE	REFERENCE	DENOMINATION	AMOUNT
001	43.01215.00		1

INDEX

02. ENGINE

MOTOR	2
EXHAUST PIPE	3
INLET	4
DELIVERY	5
Radiator (Part 1)	7
Radiator (Part 2)	9
engine supports	10

03. TRANSMISSION

Hydrostatic pump	11
Hydrostatic engine	12
FRONT AXLE	13
REAR AXLE (1)	14
REAR AXLE (2)	15
Steering cylinder mounting	16

04. CHASSIS

Chassis	17
---------	----

05. ACTUATORS

BRAKES	18
--------	----

06. STEERING

STEERING	20
----------	----

RUEDAS

Front Wheels	21
REAR WHEELS	22

08. BODYWORK

CABIN (1)	23
CABIN (2)	25
CABIN (3)	26
SHEETS (1)	28
SHEETS (2)	29
COUNTERWEIGHT	31

09. MAST 3.30M DUPLEX

01. FULL MAST	32
02. MASTS AND SIDE SHIFT	33
03. MAST COMPONENTS	34
04. HYDRAULIC SYSTEM	36
05. SIDE-SHIFT PANEL 1600/1260MM	37
06. HYDRAULIC 4th VALVE	38

09. MAST 3.70M TRIPLEX

01. FULL MAST	39
02. MASTS AND SIDE SHIFT	40
03. MAST COMPONENTS	41
04. HYDRAULIC SYSTEM	44
05. SIDE-SHIFT PANEL 1600/1260MM	45
06. HYDRAULIC 4th VALVE	47

09. MAST 4.30M TRIPLEX

01. FULL MAST	48
02. MASTS AND SIDE SHIFT	49
03. MAST COMPONENTS	50
04. HYDRAULIC SYSTEM	53
05. SIDE-SHIFT PANEL 1600/1260MM	54
06. HYDRAULIC 4th VALVE	56

09. MAST 5.40M TRIPLEX

01. FULL MAST	57
02. MASTS AND SIDE SHIFT	58
03. MAST COMPONENTS	59
04. HYDRAULIC SYSTEM	62
05. SIDE-SHIFT PANEL 1600/1260MM	63
06. HYDRAULIC 4th VALVE	65

10. HYDRAULIC INSTALLATION

Distributor	66
Hydraulic tank	67
Oil tank	69
Transmission diagram	70
Service diagram	73
Valves	75

11. ELECTRIC INSTALLATION

FLASHING BEACON	76
BATTERY	77
WIRING HARNESS (PART 1)	79
WIRING HARNESS (PART 2)	80
WIRING HARNESS (PART 3)	81
BUZZERS	82
Switches	83
Electric control system	84

12. FINISHES

STICKERS & PLATES (PART 1)	85
STICKERS & PLATES (PART 2)	86

13. ACCESSORIES

HALF-CLOSED CABIN	87
CLOSED CABIN (1)	90
CLOSED CABIN (2)	93
CLOSED CABIN (3)	95
AIR CONDITIONING (1)	97
AIR CONDITIONING (2)	99
LIGHTS	101
WORK LIGHTS	103
SEAT (OPTIONAL)	104
CYCLONIC FILTER	105